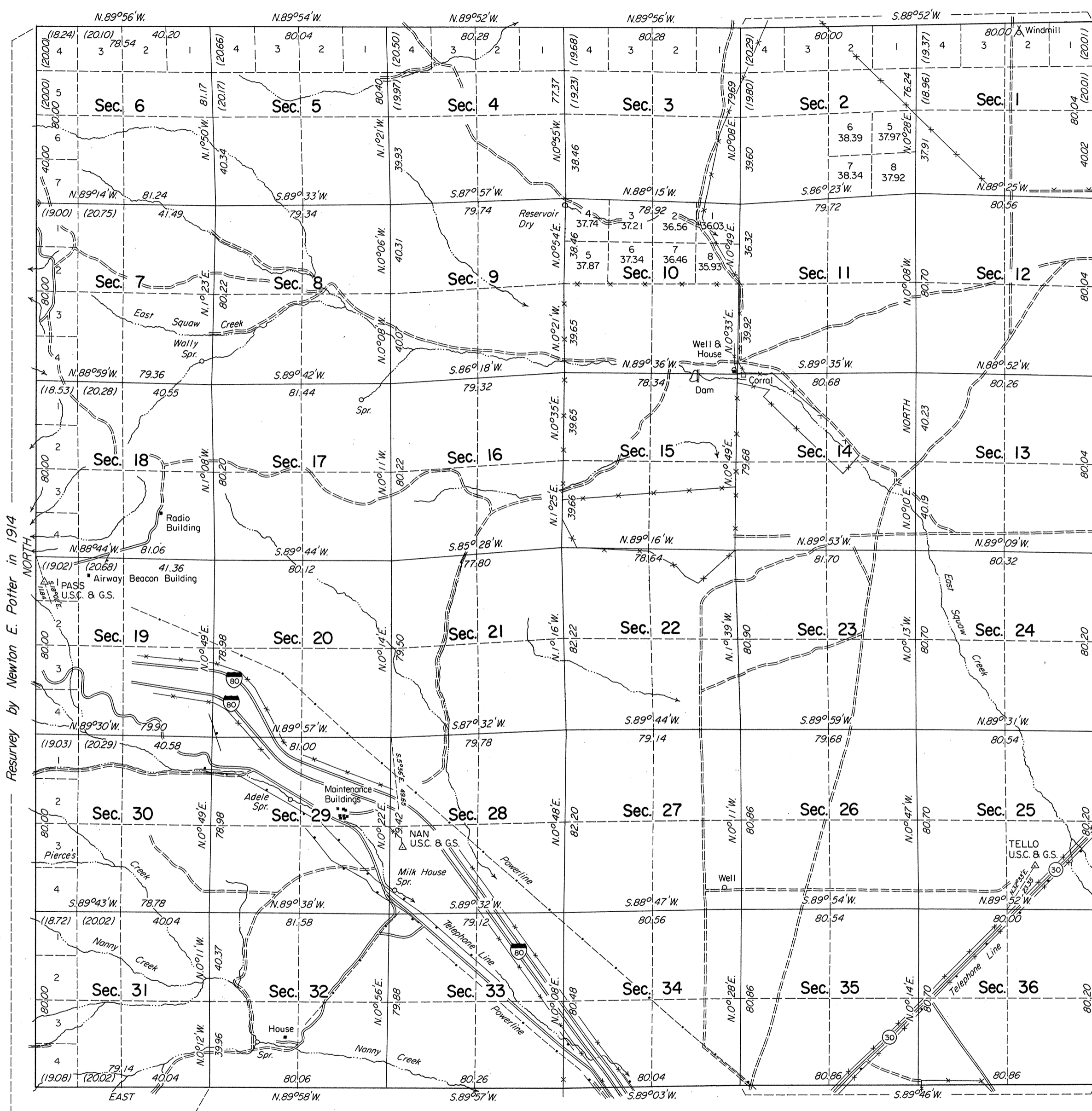


TOWNSHIP 37 NORTH, RANGE 66 EAST, OF THE MOUNT DIABLO MERIDIAN, NEVADA

DEPENDENT RESURVEY

OFFICIALLY FILED
NEVADA STATE OFFICE
7:30 AM FEB 5, 1979



N.89°52'E.
78.08

Sec. 6

A history of surveys is contained in the field notes.

This plat represents a dependent resurvey of the east and north boundaries, a portion of the south boundary, and the subdivisional lines of T. 37 N., R. 66 E., Mount Diablo Meridian, Nevada, designed to restore the corners in their true original locations according to the best available evidence.

Except as shown hereon, lottings and areas are as shown on the plat approved April 2, 1880.

Survey executed by Michael R. Collie, Cadastral Surveyor, August 23 through September 26, 1976, under Special Instructions dated August 19, 1976, for Group No. 543, Nevada.

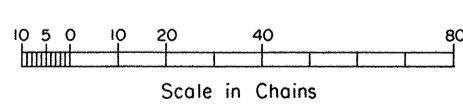
UNITED STATES DEPARTMENT OF THE INTERIOR
BUREAU OF LAND MANAGEMENT
Washington, D.C. September 15, 1978

This plat is strictly conformable to the approved field notes, and the survey, having been correctly executed in accordance with the requirements of law and the regulations of this Bureau, is hereby accepted.

For the Director

Bernard W. Foster
Chief, Division of Cadastral Survey

Latitude 41°02'21.3"N.
Longitude 114°26'55.3"W



True Meridian
Mean Magnetic Declination
17°E.