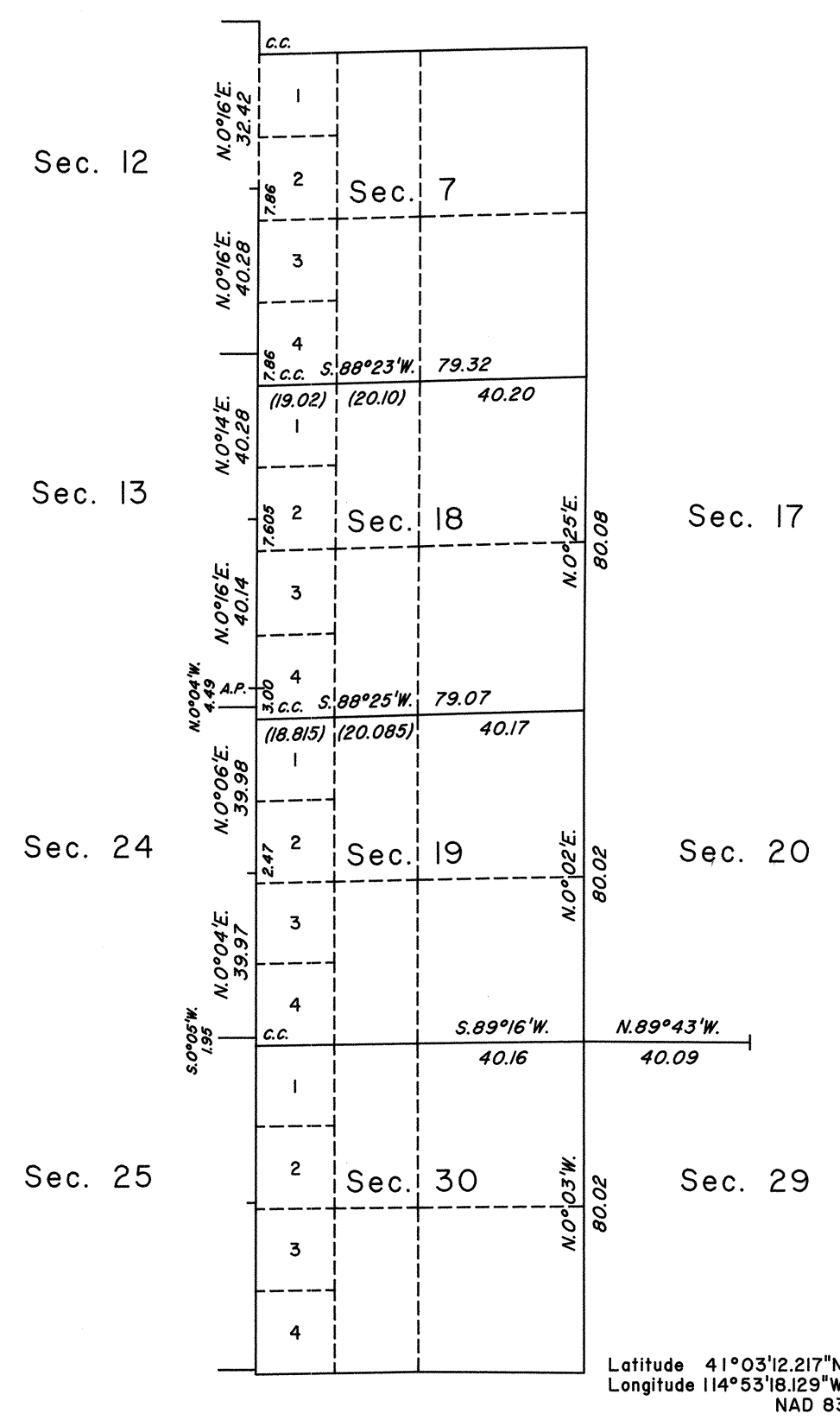
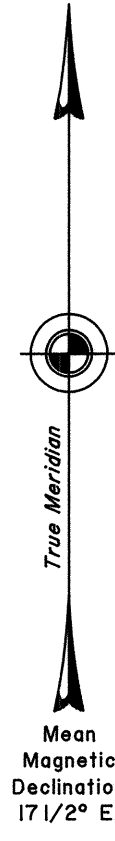


OFFICIALLY FILED  
NEVADA STATE OFFICE  
at 10:00 AM on February 4, 1999

TOWNSHIP 37 NORTH, RANGE 63 EAST, OF THE MOUNT DIABLO MERIDIAN, NEVADA  
CORRECTIVE DEPENDENT RESURVEY



Resurveyed by  
  
M. R. Collie and J. R. Munson  
  
in 1976-77

A history of surveys is contained in the field notes.

This plat represents the corrective dependent resurvey of a portion of the east boundary of Township 37 North, Range 62 East; and a portion of the subdivisional lines of Township 37 North, Range 63 East, Mount Diablo Meridian, Nevada, designed to restore the corners in their true original locations according to the best available evidence.

For those surveyed lines not showing bearings and distances, refer to the official record of 1980.

Survey executed by Ronald E. Williams, Cadastral Surveyor, beginning June 2, 1998, and completed June 3, 1998, pursuant to Special Instructions dated May 29, 1998, for Group No. 773, Nevada.

UNITED STATES DEPARTMENT OF THE INTERIOR  
BUREAU OF LAND MANAGEMENT  
  
Reno, Nevada      February 2, 1999

This plat is strictly conformable to the approved field notes, and the survey, having been correctly executed in accordance with the requirements of law and the regulations of this Bureau, is hereby accepted.

For the Director  
  
*David J. Clark*  
  
Chief Cadastral Surveyor, Nevada

