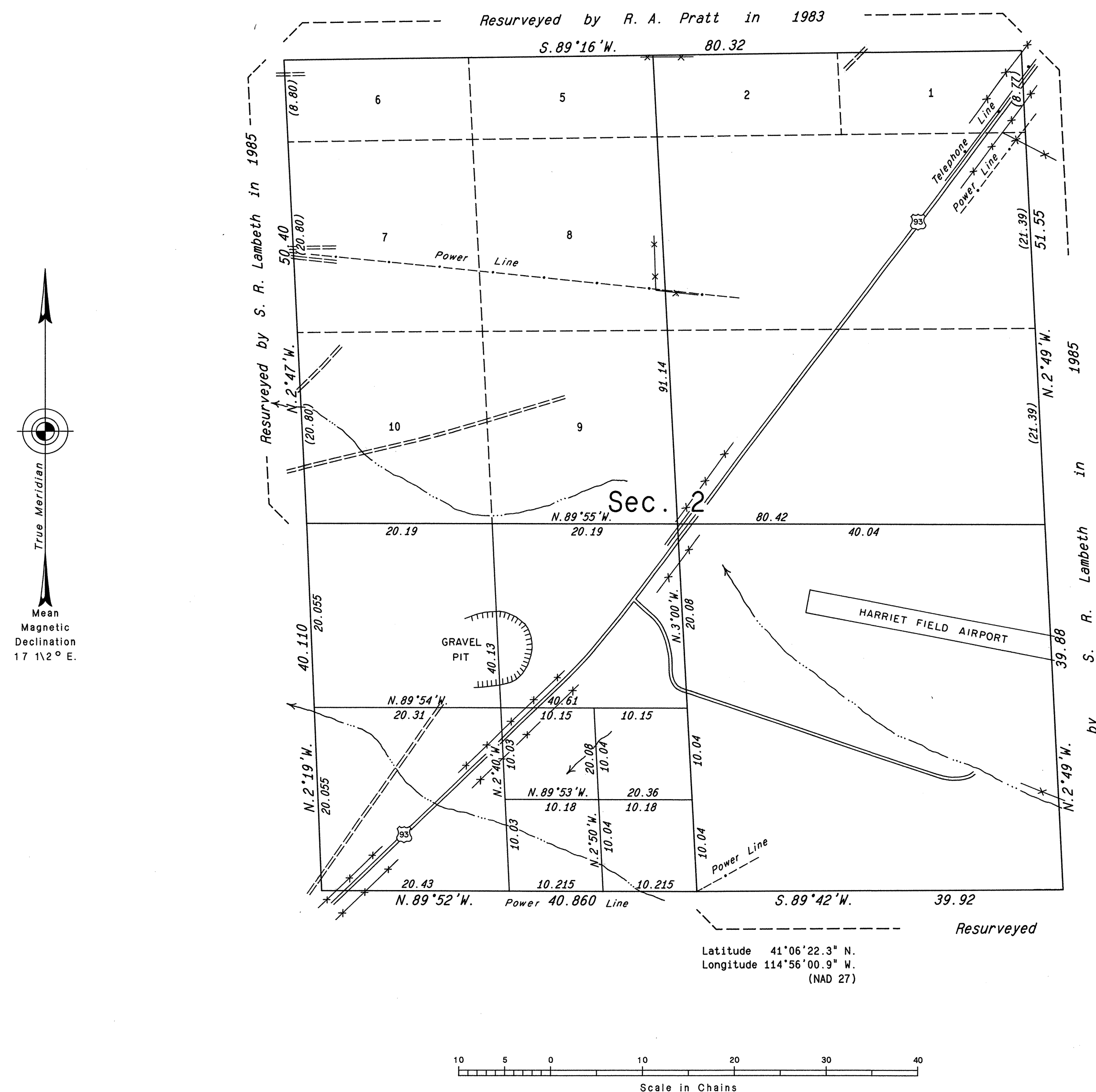


ORIGINAL

TOWNSHIP 37 NORTH, RANGE 62 EAST, OF THE MOUNT DIABLO MERIDIAN, NEVADA

DEPENDENT RESURVEY AND SUBDIVISION OF SECTION 2



History of the earlier surveys is contained in the field notes.

This plat represents the dependent resurvey of a portion of the subdivisional lines of T. 37 N., R. 62 E., designed to restore the corners in their true original locations according to the best available evidence; and the survey of the subdivision of section 2.

Lottings and areas are as indicated on the plat approved December 29, 1870 and the plat accepted July 8, 1886.

Survey executed by Thomas B. O'Toole, Cadastral Surveyor, beginning May 16, 1989 and completed May 18, 1989, under Special Instructions dated May 4, 1989, for Group No. 675, Nevada.

UNITED STATES DEPARTMENT OF THE INTERIOR
BUREAU OF LAND MANAGEMENT

Reno, Nevada January 26, 1990

This plat is strictly conformable to the approved field notes, and the survey, having been correctly executed in accordance with the requirements of law and the regulations of this Bureau, is hereby accepted.

For the Director

John S. Parrish
Chief Cadastral Surveyor