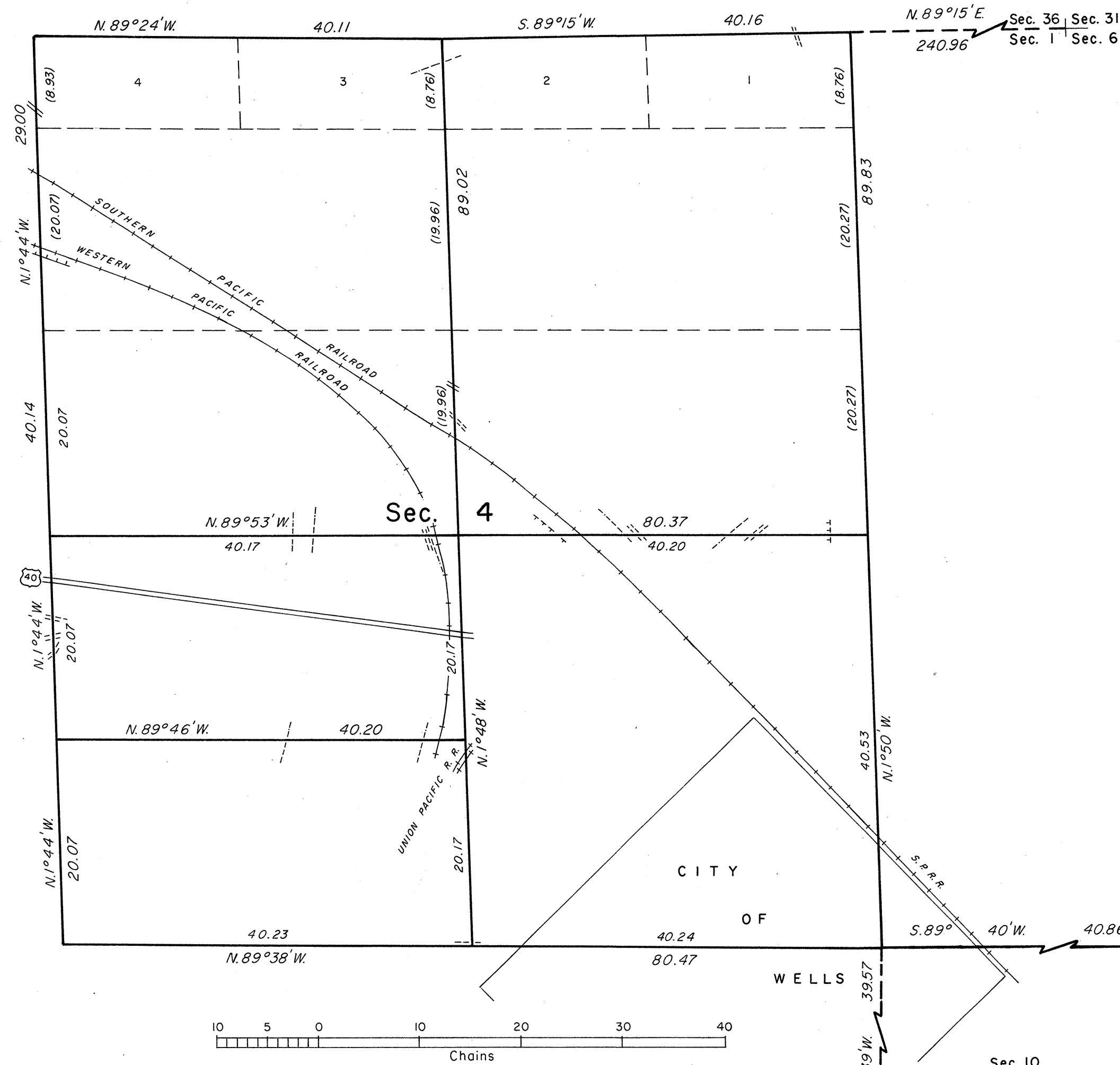


# TOWNSHIP 37 NORTH, RANGE 62 EAST, OF THE MOUNT DIABLO MERIDIAN, NEVADA

## DEPENDENT RESURVEY AND SUBDIVISION

OFFICIALLY FILED  
NEVADA STATE OFFICE  
10:00 A.M., November 18, 1980



A history of surveys is contained in the field notes.

This plat represents a dependent resurvey of a portion of the north boundary and a portion of the subdivisional lines, designed to restore the corners in their true original locations according to the best available evidence, and the subdivision of section 4, T. 37 N., R. 62 E., Mount Diablo Meridian, Nevada.

Except as indicated hereon, the lottings and areas are as shown on the plat approved December 29, 1870.

Survey executed by Harold W. Heimark, Cadastral Surveyor, beginning June 2, 1978, and completed April 12, 1979, pursuant to Special Instructions dated May 5, 1978, for Group No. 562, Nevada.

UNITED STATES DEPARTMENT OF THE INTERIOR  
BUREAU OF LAND MANAGEMENT  
Denver, Colorado October 30, 1980

This plat is strictly conformable to the approved field notes, and the survey, having been correctly executed in accordance with the requirements of law and the regulations of this Bureau, is hereby accepted.

For the Director

*Alfred A. Smith*  
Acting Chief, Cadastral Survey  
Examination and Approval Staff

