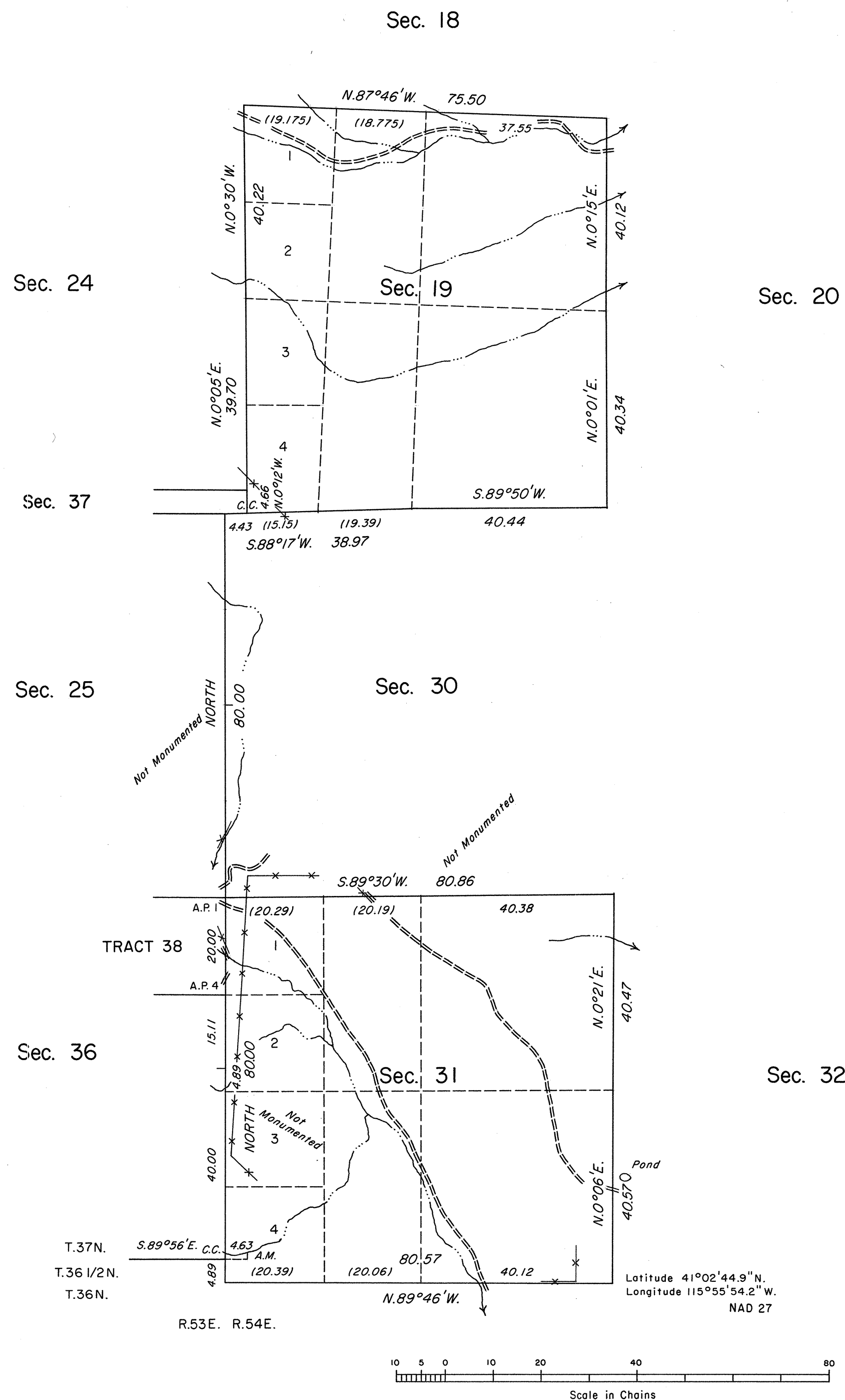


TOWNSHIP 37 NORTH, RANGE 54 EAST, OF THE MOUNT DIABLO MERIDIAN, NEVADA

DEPENDENT RESURVEY



A history of surveys is contained in the field notes.

A portion of the west boundary of T. 37 N., R. 54 E. and a portion of the east boundary of T. 37 N., R. 53 E. were dependently resurveyed concurrently under this same Group.

This plat represents the dependent resurvey of a portion of the south boundary and a portion of the subdivisional lines of Township 37 North, Range 54 East, Mount Diablo Meridian, Nevada, designed to restore the corners in their true original locations according to the best available evidence.

The lottings and areas are as shown on the plats approved September 6, 1878, October 28, 1896, and January 30, 1906.

Survey executed by James A. Mack, Cadastral Surveyor, beginning August 3, 1988, and completed November 22, 1988, pursuant to Special Instructions dated August 3, 1988, and Supplemental Special Instructions dated November 10, 1988, for Group No. 662, Nevada.

Surveyed by

A. Craven and J. E. Gignoux

in 1878

UNITED STATES DEPARTMENT OF THE INTERIOR
BUREAU OF LAND MANAGEMENT

Reno, Nevada March 24, 1994

This plat is strictly conformable to the approved field notes, and the survey, having been correctly executed in accordance with the requirements of law and the regulations of this Bureau, is hereby accepted.

For the Director

Chief Cadastral Surveyor, Nevada

T.37N., R.54E., M.D.M.