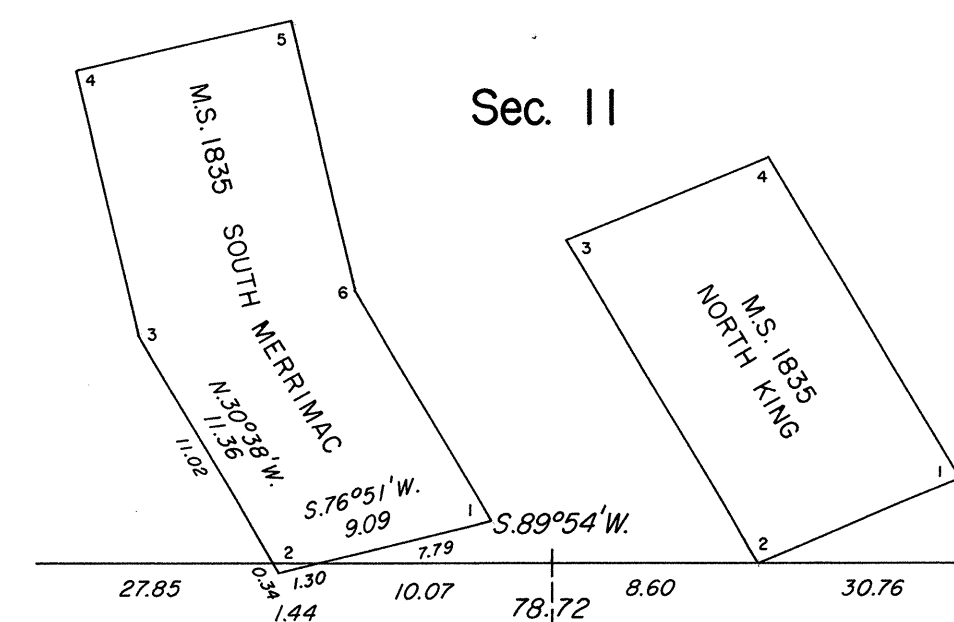
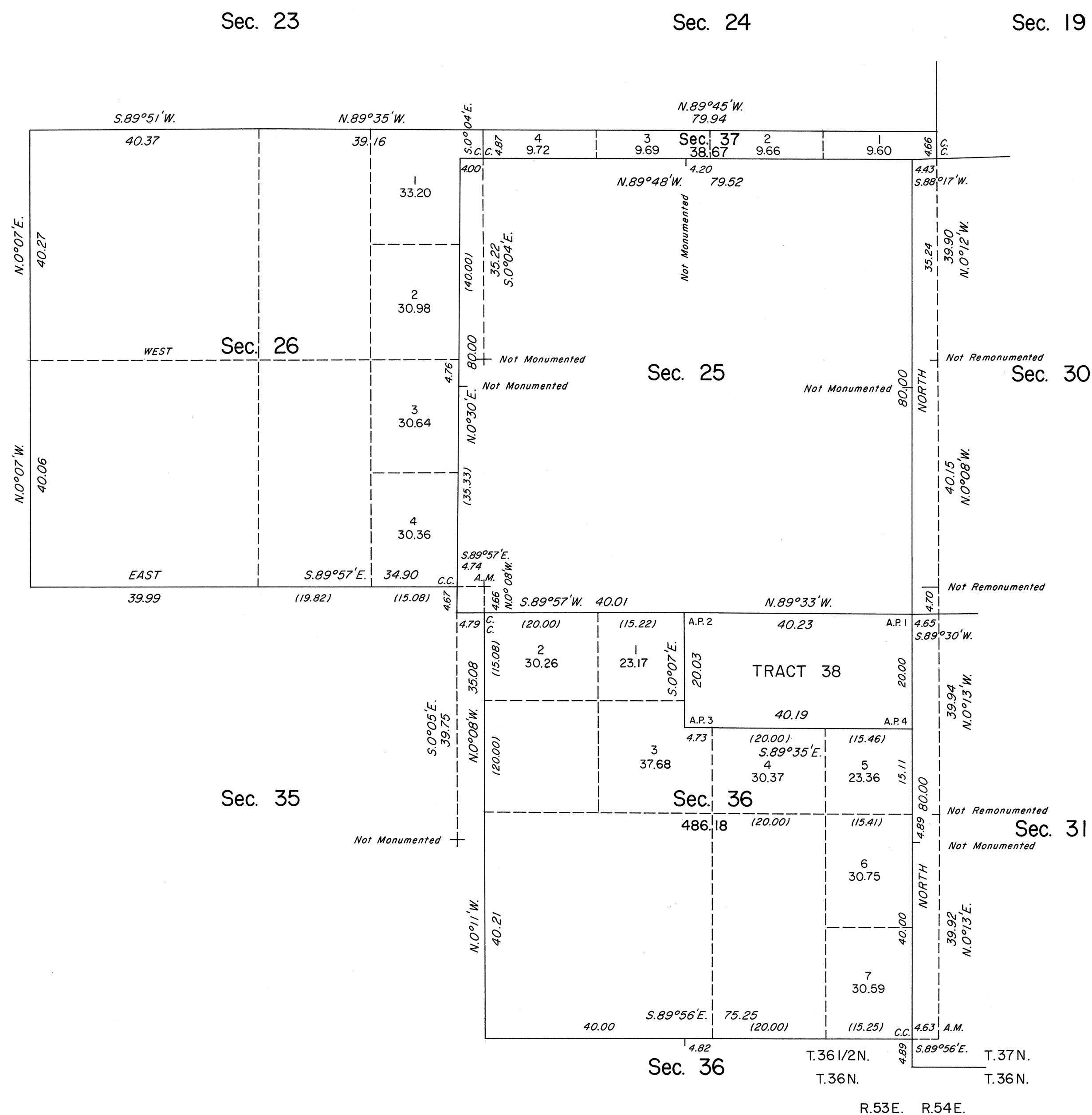
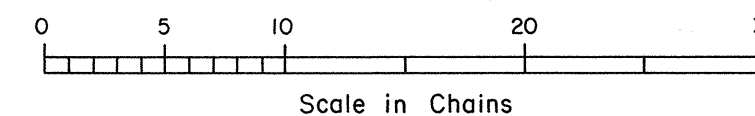


ENLARGED DIAGRAM

DETAIL A



Sec. 14



This sheet represents enlarged diagrams of sections 25, 26, 36 and 37, Mineral Survey No. 1835, and Tract No. 38.

Reference should be made to Sheet No. 1 for survey information.

UNITED STATES DEPARTMENT OF THE INTERIOR  
BUREAU OF LAND MANAGEMENT

Reno, Nevada                      March 24, 1994

This plat is strictly conformable to the approved field notes, and the survey, having been correctly executed in accordance with the requirements of law and the regulations of this Bureau, is hereby accepted.

For the Director

John D. Parrish

Chief Cadastral Surveyor, Nevada

T.37N., R.53E., M.D.M.