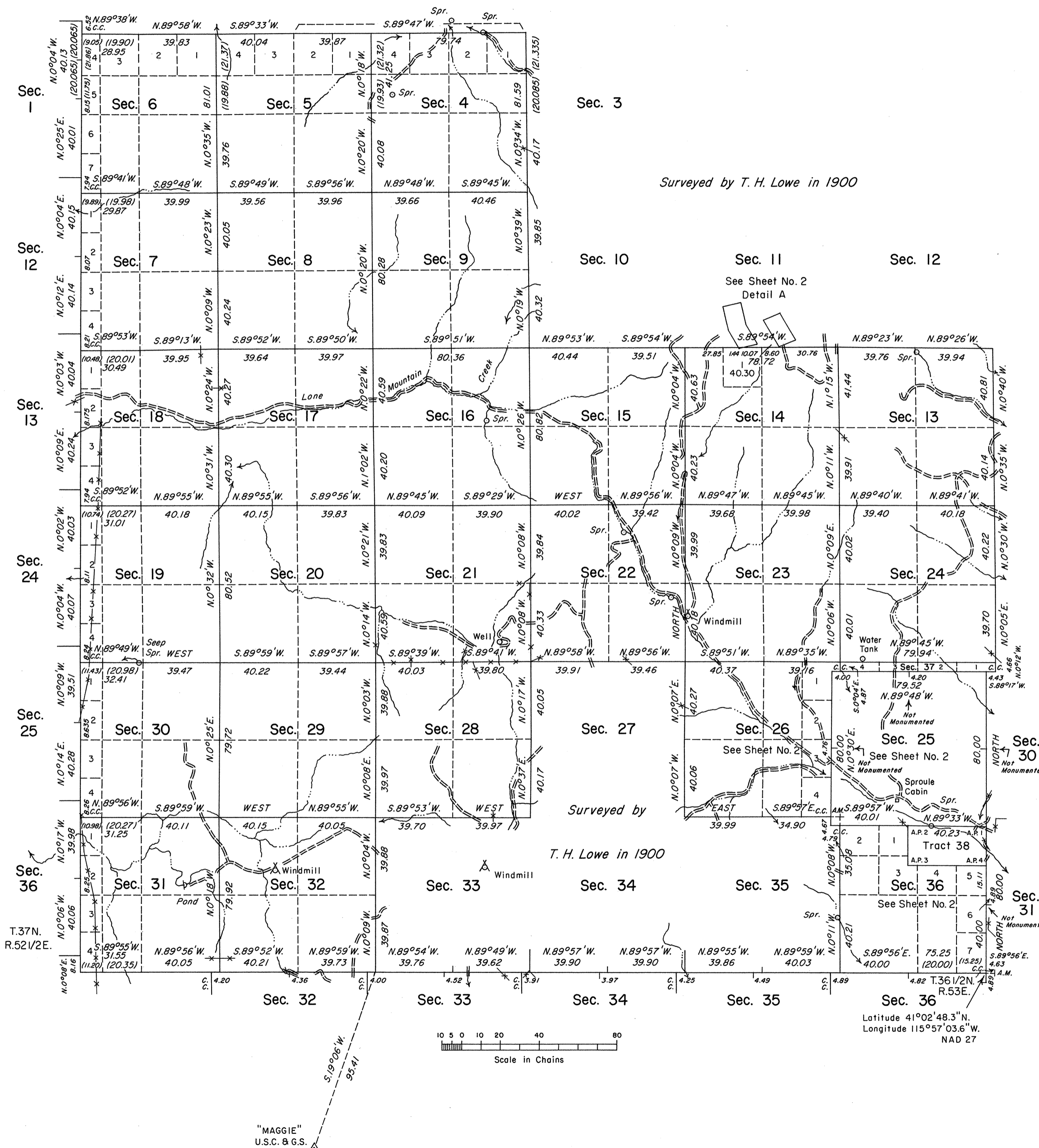


TOWNSHIP 37 NORTH, RANGE 53 EAST, OF THE MOUNT DIABLO MERIDIAN, NEVADA

DEPENDENT AND INDEPENDENT RESURVEYS AND SURVEY

OFFICIALLY FILED
NEVADA STATE OFFICE
at 10:00 AM on June 1, 1994



Surveyed by T. H. Lowe in 1900

Surveyed by
T. H. Lowe in 1900

A history of surveys is contained in the field notes.

A dependent resurvey of the west boundary was executed concurrently under this same Group.

This plat in two sheets represents the dependent resurvey of a portion of the west boundary of Township 37 North, Range 54 East; and the dependent resurvey of the south boundary and a portion of the east and north boundaries and a portion of the subdivision lines, and the retracement and remonumentation of certain corners of Mineral Survey No. 1835, designed to restore the corners in their true original locations according to the best available evidence; an independent resurvey of a portion of the subdivision lines superseding a portion of the plats approved September 6, 1878 and April 29, 1901 representing the survey of the S 1/2 NE 1/2, SE 1/4, SW 1/4 and NW 1/4 of section 36; and the survey of section 37 and Tract No. 38, Township 37 North, Range 53 East, Mount Diablo Meridian, Nevada.

Tract No. 38, shown hereon, represents the position and form of the N 1/2 of the NE 1/4 of section 36, conveyed February 8, 1890 and referred to on the plats approved September 6, 1878 and April 29, 1901.

Except as indicated hereon, the lottings and areas are as shown on the plats approved September 6, 1878 and April 29, 1901.

Survey executed by James A. Mack, Cadastral Surveyor, beginning August 3, 1988, and completed March 16, 1994, pursuant to Special Instructions dated August 3, 1988, and Supplemental Special Instructions dated November 10, 1988, for Group No. 662, Nevada.

Total Area of Tract Segregation	80.00 acres
Total Area Independently Resurveyed Exclusive of Segregation	486.18 acres
Total Area Dependently Resurveyed	15,541.53 acres
Total Area Surveyed	38.67 acres
Total Area	16,146.38 acres

For enlargements of sections 25, 26, 36 and 37, Mineral Survey No. 1835, and Tract No. 38, see Sheet No. 2.

UNITED STATES DEPARTMENT OF THE INTERIOR
BUREAU OF LAND MANAGEMENT

Reno, Nevada March 24, 1994

This plat is strictly conformable to the approved field notes, and the survey, having been correctly executed in accordance with the requirements of law and the regulations of this Bureau, is hereby accepted.

For the Director

Chief Cadastral Surveyor, Nevada

T.37N., R.53E., M.D.M.