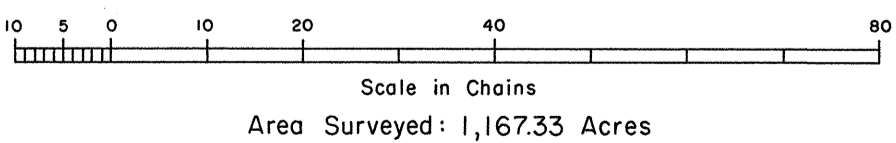
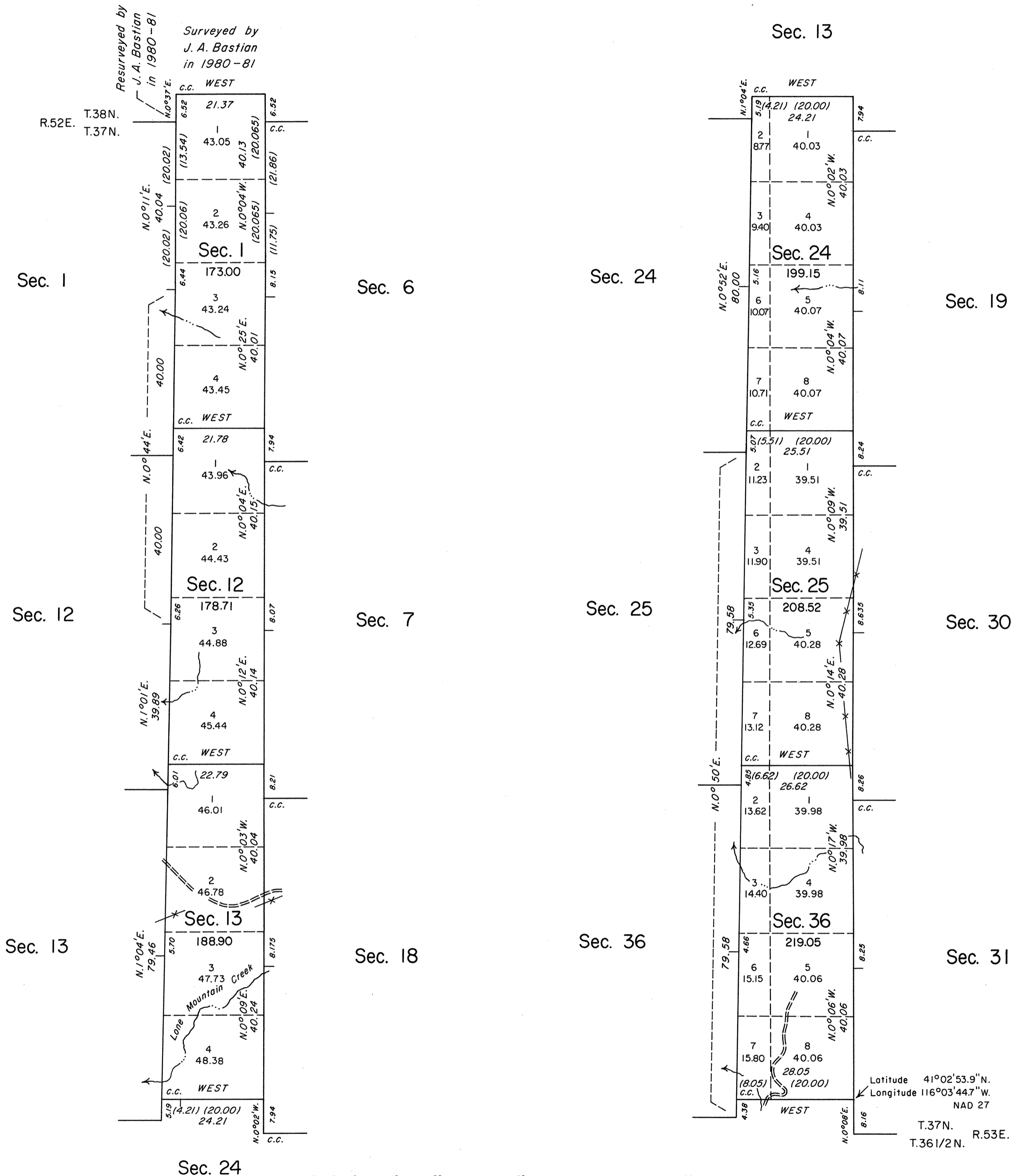
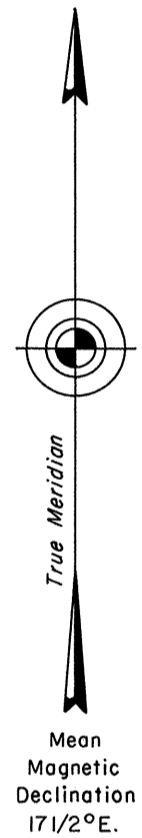


TOWNSHIP 37 NORTH, RANGE 52 1/2 EAST, OF THE MOUNT DIABLO MERIDIAN, NEVADA  
DEPENDENT RESURVEY AND SURVEY

OFFICIALLY FILED  
NEVADA STATE OFFICE  
at 10:00 AM on June 1, 1994



A history of surveys is contained in the field notes.  
This plat represents the dependent resurvey of the east boundary of Township 37 North, Range 52 East; and the dependent resurvey of the west boundary of Township 37 North, Range 53 East, designed to restore the corners in their true original locations according to the best available evidence; and the survey of the south boundary and subdivisional lines of Township 37 North, Range 52 1/2 East, Mount Diablo Meridian, Nevada.

Survey executed by James A. Mack, Cadastral Surveyor, beginning August 3, 1988, and completed November 22, 1988, pursuant to Special Instructions dated August 3, 1988, and Supplemental Special Instructions dated November 10, 1988, for Group No. 662, Nevada.

UNITED STATES DEPARTMENT OF THE INTERIOR  
BUREAU OF LAND MANAGEMENT  
Reno, Nevada March 24, 1994

This plat is strictly conformable to the approved field notes, and the survey, having been correctly executed in accordance with the requirements of law and the regulations of this Bureau, is hereby accepted.

For the Director  
*John S. Parish*  
Chief Cadastral Surveyor, Nevada

Latitude 41°02'53.9"N.  
Longitude 116°03'44.7"W.  
NAD 27  
T.37N.  
R.53E.