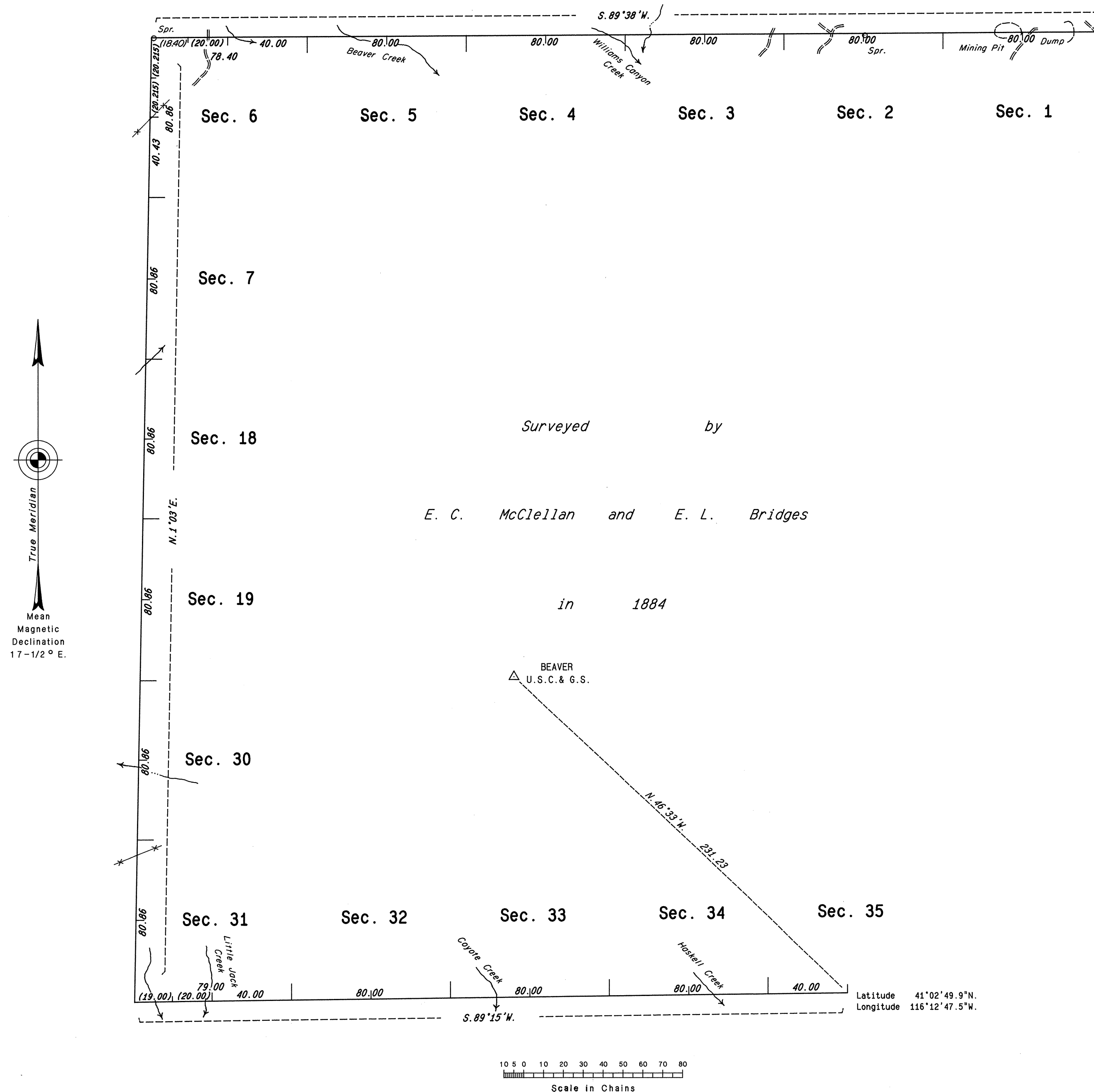


ORIGINAL

TOWNSHIP 37 NORTH, RANGE 51 EAST, OF THE MOUNT DIABLO MERIDIAN, NEVADA  
DEPENDENT RESURVEY



True Meridian  
Mean Magnetic Declination  
17-1/2° E.

History of the earlier surveys is contained in the field notes.

A dependent resurvey of the south boundary of T. 38 N., R. 51 E., was executed concurrently under this same Group.

This plat represents a dependent resurvey of a portion of the south boundary and the west boundary of T. 37 N., R. 51 E., designed to restore the corners in their original locations according to the best available evidence.

Survey executed by Stephen R. Lambeth, Cadastral Surveyor, beginning June 27, 1986 and completed July 10, 1986, under Special Instructions dated August 20, 1985 and Supplemental Special Instructions dated June 26, 1986 for Group No. 626, Nevada.

Surveyed by  
E. C. McClellan and E. L. Bridges  
in 1884

UNITED STATES DEPARTMENT OF THE INTERIOR  
BUREAU OF LAND MANAGEMENT

Reno, Nevada April 3, 1987

This plat is strictly conformable to the approved field notes, and the survey, having been correctly executed in accordance with the requirements of law and the regulations of this Bureau, is hereby accepted.

For the Director

*Lacel E. Bland*

Chief Cadastral Surveyor

Latitude 41°02'49.9"N.  
Longitude 116°12'47.5"W.

Scale in Chains