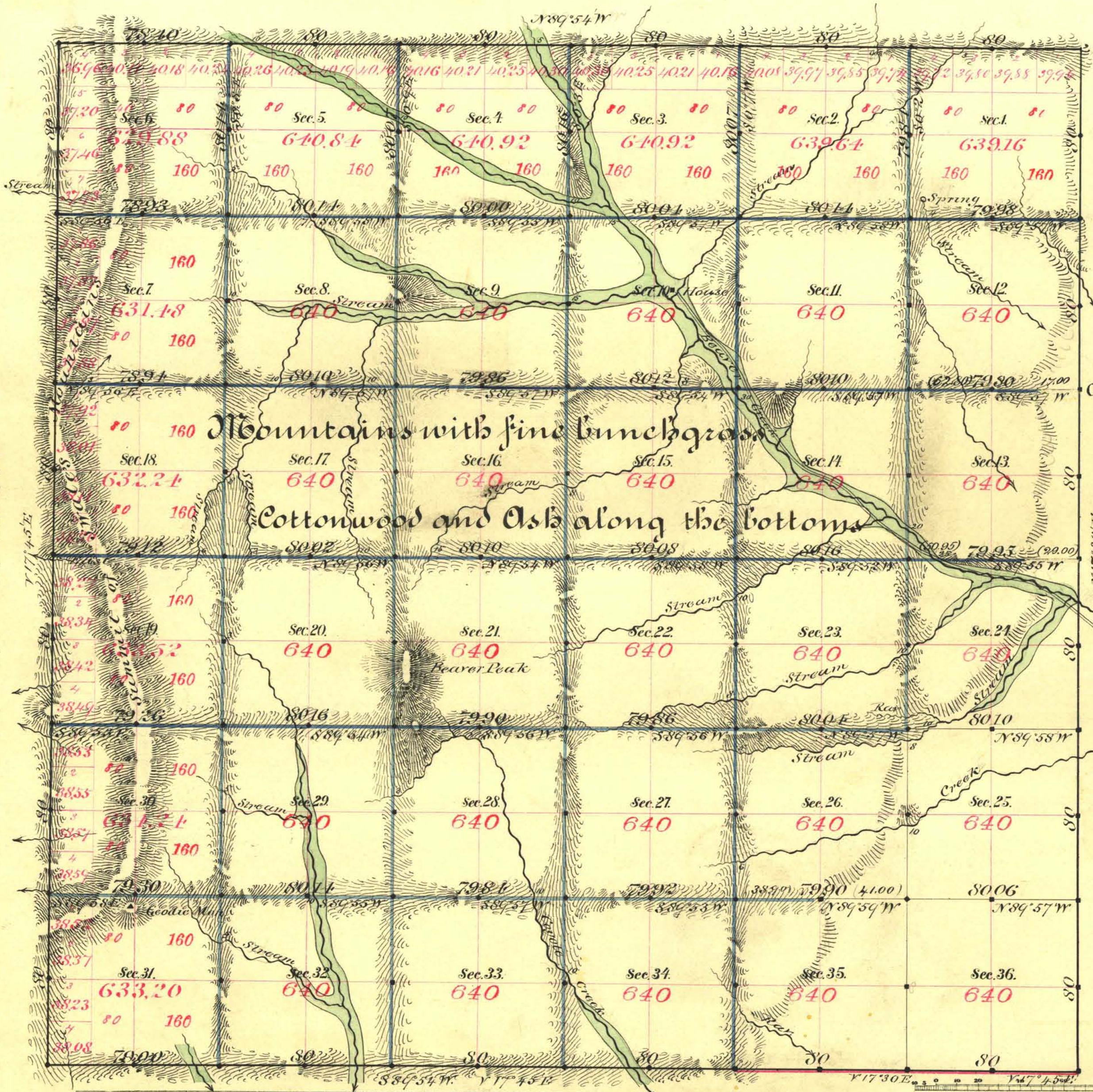


TOWNSHIP N^o 37 NORTH RANGE N^o 51 EAST

MOUNT DIABLO MERIDIAN



Aggregate area of Public Land surveyed 22,996.04 acres

Commenced Oct. 14th 1884
Completed " 21st 1884

Subdivisions run with a Variation of 17° 45' East

For corrections see R 50

Surveys Designated.	By Whom Surveyed.	Date of Contract.	Amount of Surveys.	When Surveyed.
E. bay. & S. road	Hatch & Eaton	Feb. 6 th 1871	N. 8 - 80 - 80	1871
N. W. S. S. block	T. K. Stewart	Aug 7 th 1884	15 - 77 - 40	1884
Subd. s. black	M. Collins Bridges	" 9 th "	5 - 07 - 16	Oct. "
" blue	"	" " "	54 - 69 - 18	" "

The above Map of Township No. 37 North of Range No. 51 East of Mount Diablo Meridian is strictly conformable to the field notes of the survey thereof on file in this Office, which have been examined and approved.

Surveyor General's Office, Reno, *B. B. Corning*
January 13th 1885
 U.S. Sur. Gen'l. of Nevada.