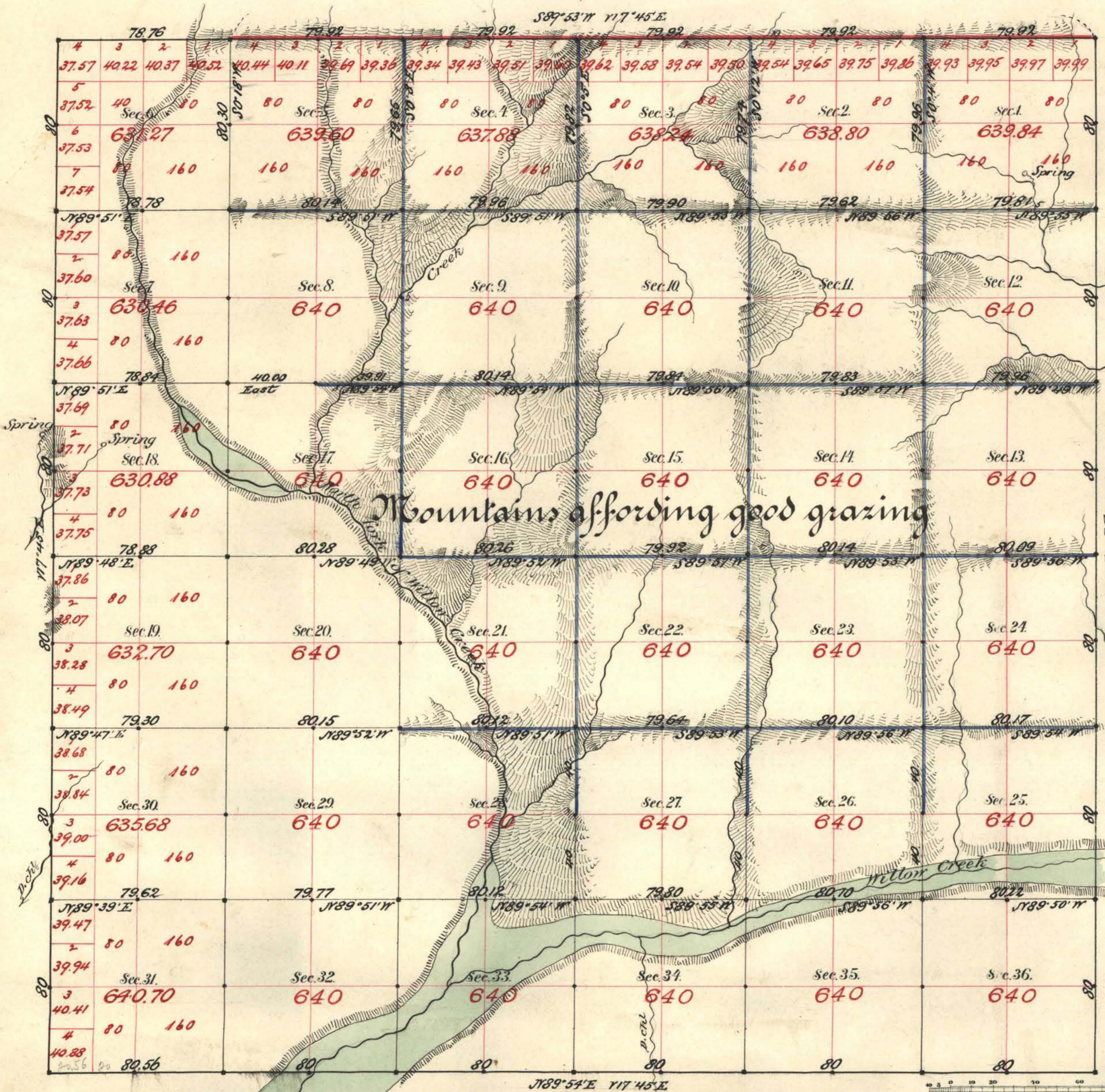


*Survey by Mr. Clifton and Bridges rejected by Com. Gen. & Land Office date of Official Return May 31st 1886*

*See letter from Com. dated July 24, 1880 (54).*

TOWNSHIP N<sup>o</sup> 37 NORTH RANGE N<sup>o</sup> 48 EAST MOUNT DIABLO MERIDIAN



Aggregate Area of Public Land surveyed by  
 Hatch, Eaton & Smyler Nov. 10<sup>th</sup> 1849. 10,041.69  
 " by Mr. Clifton & Bridges Nov. 14<sup>th</sup> 1884. 12,957.30  
 Aggregate 22,999.05

Old work commenced Dec 24<sup>th</sup> 1872  
 " " completed " 27<sup>th</sup> "  
 New " commenced " 18<sup>th</sup> 1884  
 " " completed " 26<sup>th</sup> "

Old work approved by S. D. Davis Feb. 13<sup>th</sup> 1873

Subdivs run with a Var. of 14' 45" East

Surveys Designated.	By Whom Surveyed.	Date of Contract.	Amount of Surveys.	When Surveyed.
Township lines black	Hatch, Eaton & Smyler	Nov. 10 <sup>th</sup> 1849	12 - 76 - 52	1849
Subdivs "	"	"	25 - 76 - 16	Dec. "
N. bdy. red	S. K. Stewart	Nov. 10 <sup>th</sup> 1884	4 - 79 - 60	1884
Subdivs. blue	Mr. Clifton & Bridges	" 14 <sup>th</sup> "	33 - 78 - 75	"

No. 54  
173  
174

The above Map of Township No. 37 North of Range No. 48 East Mount Diablo Meridian is strictly conformable to the field notes of the survey thereof on file in this Office, which have been examined and approved.

Surveyor General's Office Reno, *66* *Conning*  
 March 21<sup>st</sup> 1885 U.S. Surv. Gen'l. of Nevada.