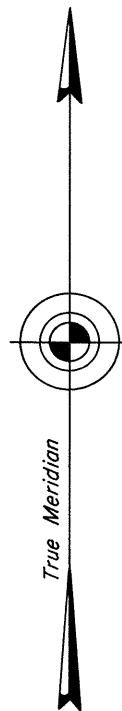
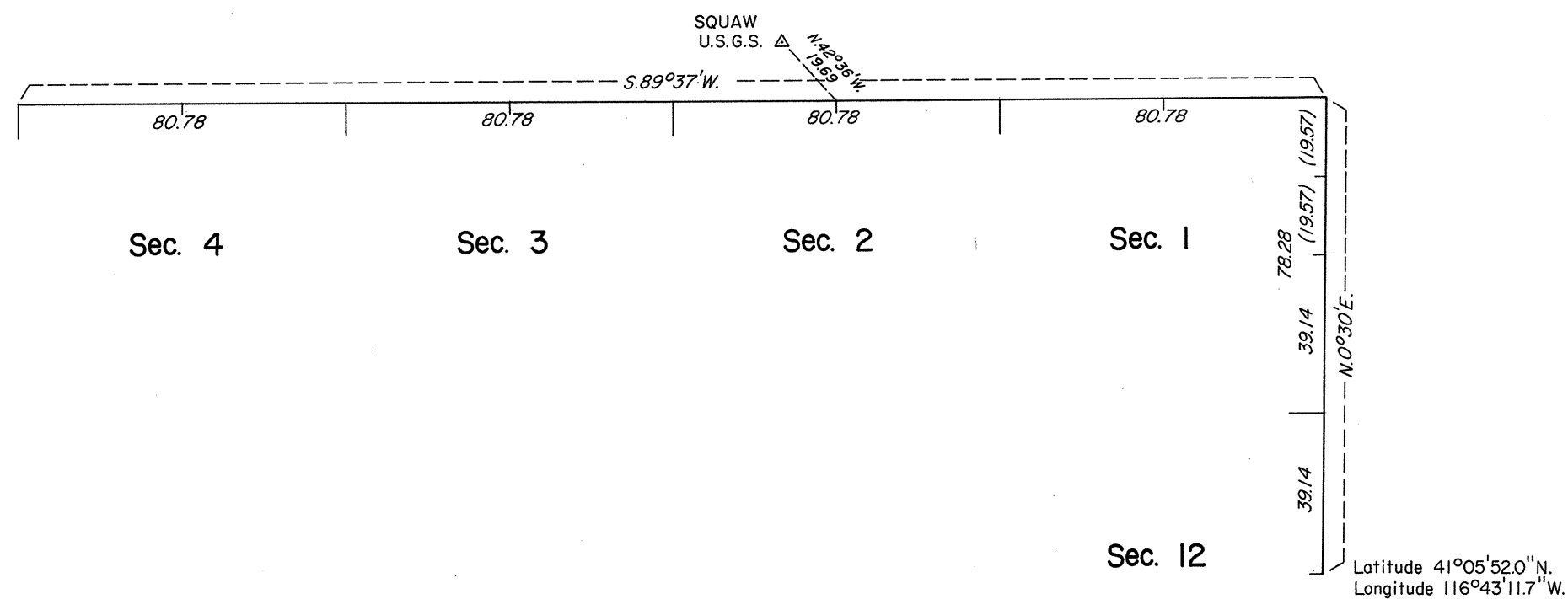


TOWNSHIP 37 NORTH, RANGE 46 EAST, OF THE MOUNT DIABLO MERIDIAN, NEVADA
DEPENDENT RESURVEY



Mean Magnetic Declination
17 1/2° E.

A history of surveys is contained in the field notes.

This plat represents the dependent resurvey of a portion of the east and north boundaries of T. 37 N., R. 46 E., designed to restore the corners in their true original locations according to the best available evidence.

Survey executed by Joseph A. Bastian and Stephen R. Lambeth, Cadastral Surveyors, beginning September 23, 1981, and completed October 7, 1982, pursuant to Special Instructions dated July 17, 1981, for Group No. 597, Nevada.

UNITED STATES DEPARTMENT OF THE INTERIOR
BUREAU OF LAND MANAGEMENT

Reno, Nevada

October 21, 1983

This plat is strictly conformable to the approved field notes, and the survey, having been correctly executed in accordance with the requirements of law and the regulations of this Bureau, is hereby accepted.

For the Director

Lacel E. Bland

Acting Deputy State Director, Operations

