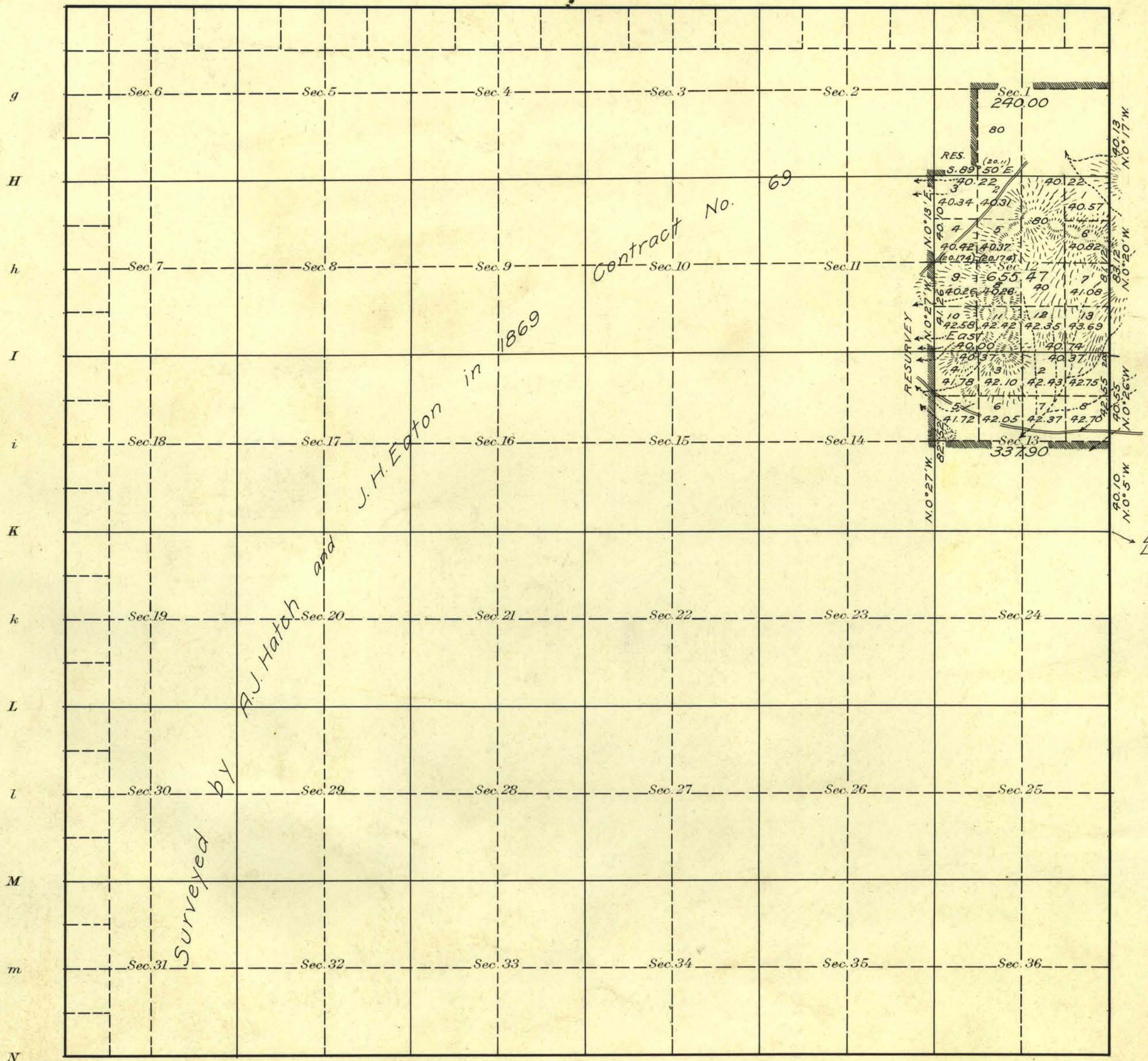


Township N^o 37 North Range N^o 44 East Mt Diablo Meridian, Nevada

G f F e E d D c C b B a A



W. Latitude 41° 3' 30" N
Longitude 116° 57' W

Areas in Acres	
Public Land	895.47
Indian Reservation	
Indian Allotments	
Mineral Claims	
Water Surface	
C.P.R.R. Land Grant	337.90
Total Area	1233.37

Scale 40 Chains to an inch

Mean Magnetic Declination 18° 55' E.

Surveys Designated	By Whom Surveyed	Group			When Surveyed		
		No.	Date of Instructions	Mls. chs. fcs.	Begun	Completed	
E. Boundary (res.)	Winfred A. Pray	24	Feb. 25, 1913	2 43 90	Aug. 11, 1914	Aug. 11, 1914	
Subdivisions	"	"	"	1 61 07	" 12, "	" 12, "	
" (res.)	"	"	"	2 23 99	" " "	" " "	

The above map of Township No. 37 North Range No. 44 East of the Mt. Diablo Meridian Nevada is strictly conformable to the field notes of the survey thereof on file in this office, which have been examined and approved

U. S. Surveyor General's Office.
Reno, Nevada January 29, 1916

John B. Sullivan
Surveyor General.