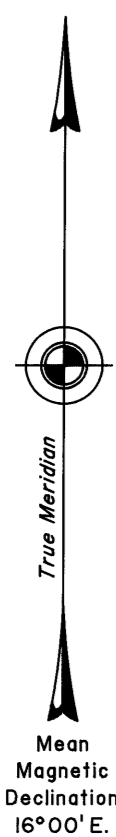
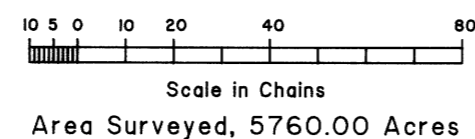
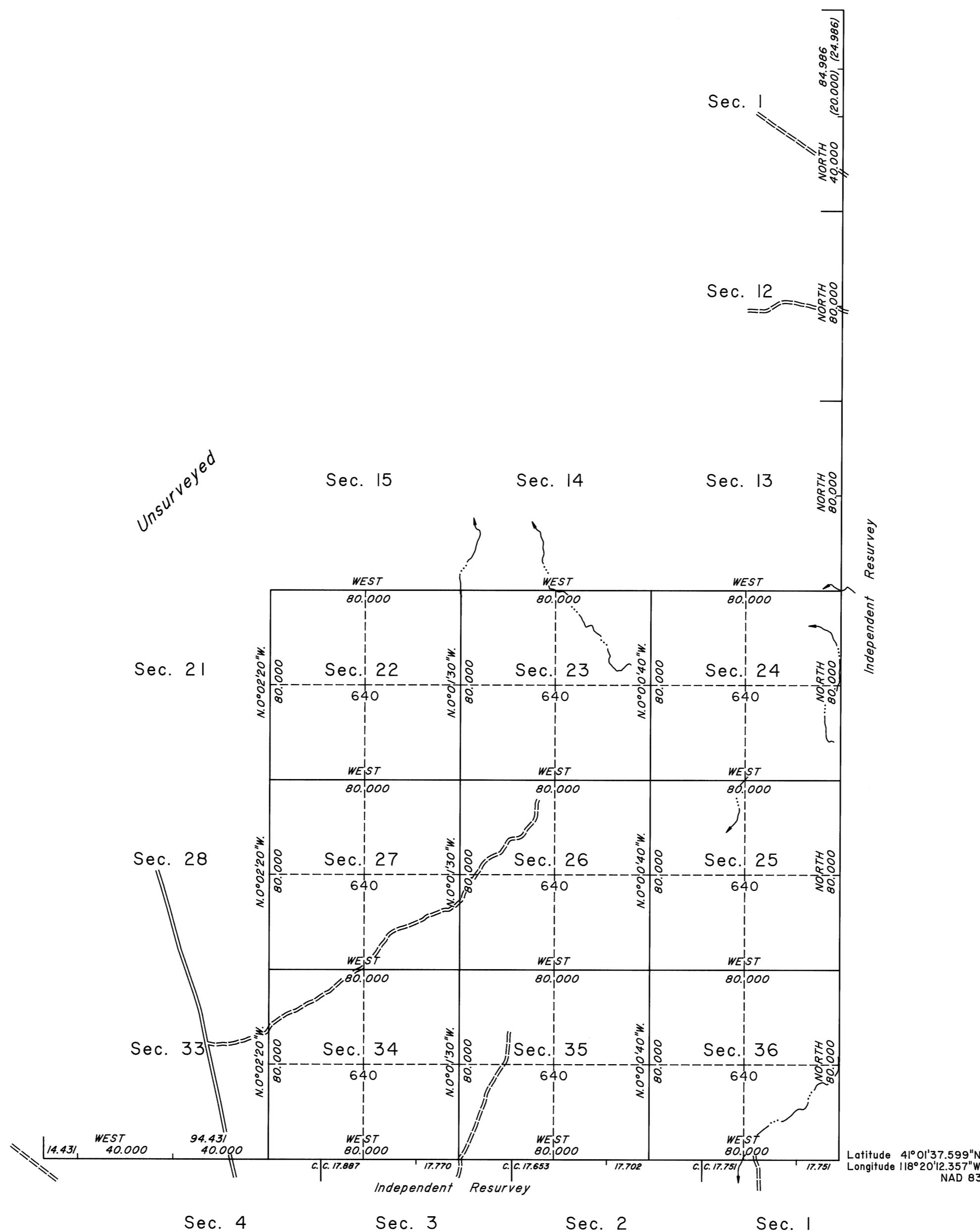


# TOWNSHIP 37 NORTH, RANGE 32 EAST, OF THE MOUNT DIABLO MERIDIAN, NEVADA

## INDEPENDENT RESURVEY AND SURVEY



Surveyed by  
*G. W. Garside*  
in 1874



A history of surveys is contained in the field notes.

This plat represents the independent resurvey of a portion of the south boundary and the east boundary, and the survey of a portion of the subdivisional lines of Township 37 North, Range 32 East, Mount Diablo Meridian, Nevada.

Survey executed by David L. Dukleth, Cadastral Surveyor, beginning July 19, 2004, and completed May 12, 2005, pursuant to Special Instructions dated August 7, 2001, and Supplemental Special Instructions dated July 16, 2004, for Group No. 803, Nevada.

UNITED STATES DEPARTMENT OF THE INTERIOR  
BUREAU OF LAND MANAGEMENT

Reno, Nevada September 27, 2005

This plat is strictly conformable to the approved field notes, and the survey, having been correctly executed in accordance with the requirements of law and the regulations of this Bureau, is hereby accepted.

For the Director

Chief Cadastral Surveyor, Nevada