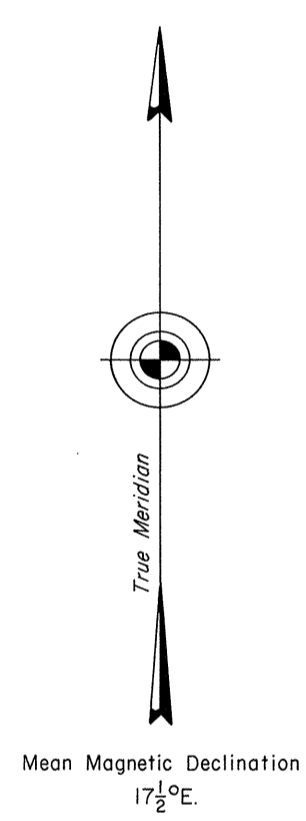
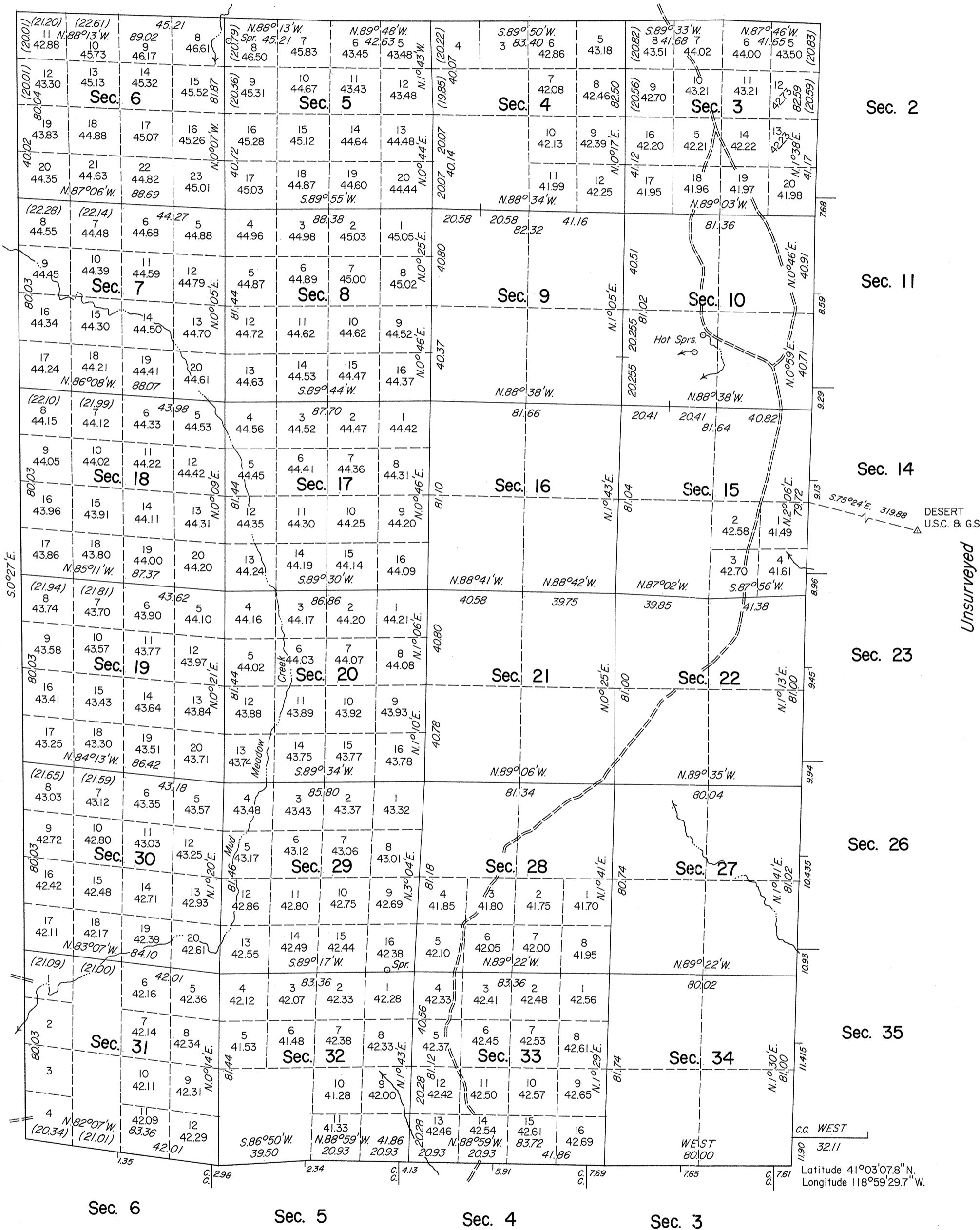


TOWNSHIP 37 NORTH, RANGE 26 EAST, OF THE MOUNT DIABLO MERIDIAN, NEVADA

DEPENDENT RESURVEY



History of the earlier surveys is contained in the field notes.

A dependent resurvey of a portion of the south boundary was resurveyed concurrently under T. 36 N., R. 26 E., of this same Group.

This plat represents a dependent resurvey of a portion of the north boundary and a portion of the subdivisional lines of T. 37 N., R. 26 E., designed to restore the corners in their true original locations according to the best available evidence.

Lottings and areas, except as shown hereon, are as shown on plat approved April 5, 1877.

Survey executed by Neil R. Forsyth and Ronald E. Williams, Cadastral Surveyors, August 11, 1981 to May 27, 1982, under Special Instructions dated September 19, 1979, Supplemental Special Instructions dated October 22, 1981, for Group No. 578, Nevada.

UNITED STATES DEPARTMENT OF THE INTERIOR
BUREAU OF LAND MANAGEMENT
Reno, Nevada May 5, 1983

This plat is strictly conformable to the approved field notes, and the survey, having been correctly executed in accordance with the requirements of law and the regulations of this Bureau, is hereby accepted.

For the Director
Lacel E. Bland
Acting Deputy State Director, Operations

