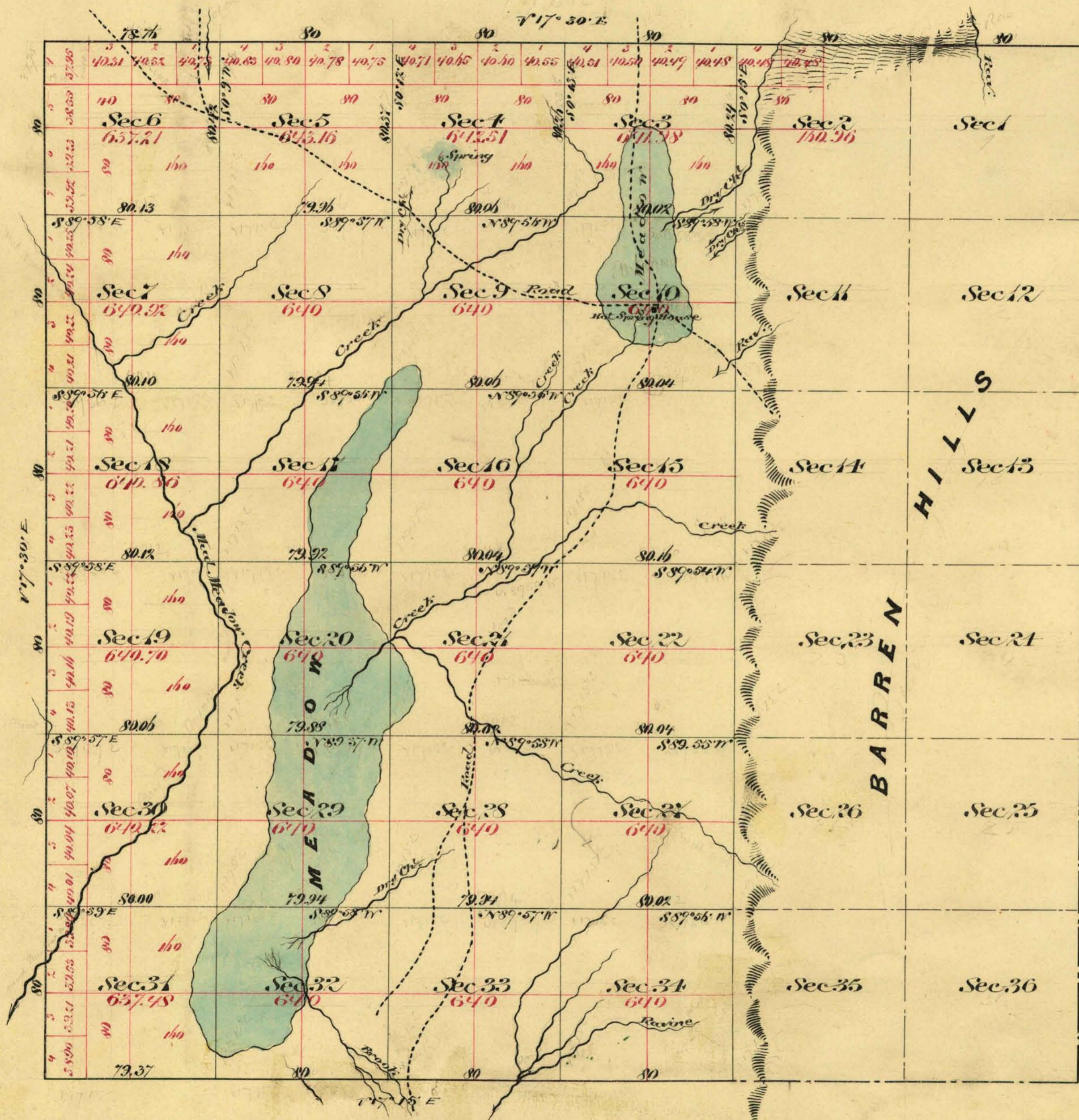


Township N^o 37 North Range N^o 26 East Mount Diablo Meridian



Aggregate Area of Public Land Surveyed 15,556.00
 Estimated " " Barren Hills Unsurveyed 7,529.96
 Aggregate 23,085.96

Commenced February 3rd 1877
 Completed " " 8th

Subdivision lines not otherwise noted run with Var. of 17' 15" E

Surveys design ^d	By whom surveyed	Date of Contract	Acres of Surveys	When Surveyed
N. & N. Boundary	C. W. Curwile	Dec. 7 th 1876	M - 78 - 76	1876
South	" "	Nov. 11 th 1876	3 - 79 - 57	1876
Subdivisions	" "	" "	44 - 01 - 74	February

55
74

The above map of Township N^o 37 North, Range N^o 26 East, Mount Diablo Meridian is strictly conformable to the field notes of the survey thereof on file in this office which have been examined and approved U. S. Surveyor Gen^l Office Virginia City Nev. April 5th 1877

0559

T37N, R26E.

C. S. Davis
 U. S. Surveyor Gen^l of Nev.