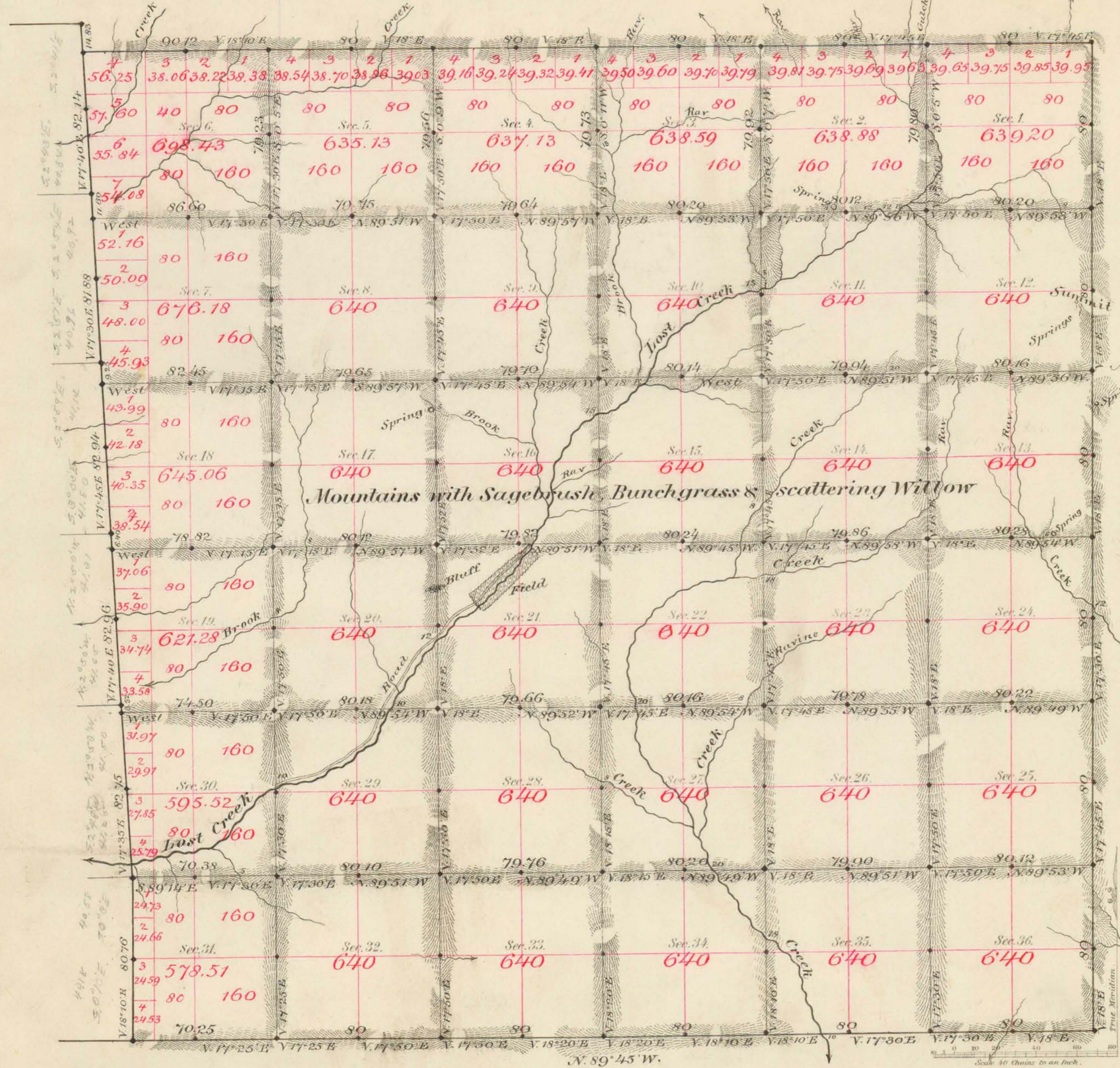


TOWNSHIP N^o 37 NORTH RANGE N^o 20 EAST MOUNT DIABLO MERIDIAN



Aggregate Area of Public Lands surveyed 23,003.91. A.S.

Mountains with Sagebrush, Bunchgrass & scattering Willow

Commenced Nov. 4th 1882
Completed " 13th "

| Surveys Designated | By Whom Surveyed | Date of Contract | Amount of Surveys | When Surveyed |
|-----------------------|------------------|----------------------------|-------------------|---------------|
| W. Boundary | G. W. Oarside | Dec. 16 th 1879 | 36 30 1/2 | 1880 |
| Wiretraced N.S. & E. | F. G. Ward | June 29 th 1882 | 24 13 80 | 1882 |
| Subdivisions | " | " | 59 70 89 | Nov " |
| Correction on W. bdy. | " | " | 30 77 | " |

N^o 600.
73
143
"

The above Map of Township N. 37 North of Range N. 20 East of Mt. Diablo Meridian is strictly conformable to the field notes of the survey thereof on file in this Office, which have been examined and approved.
Surveyor General's Office,
Reno, Nevada
December 9th 1882
C. S. Davis, Sur. Gen. Nevada

A.L. Bacon & Co. Lith. S.F.