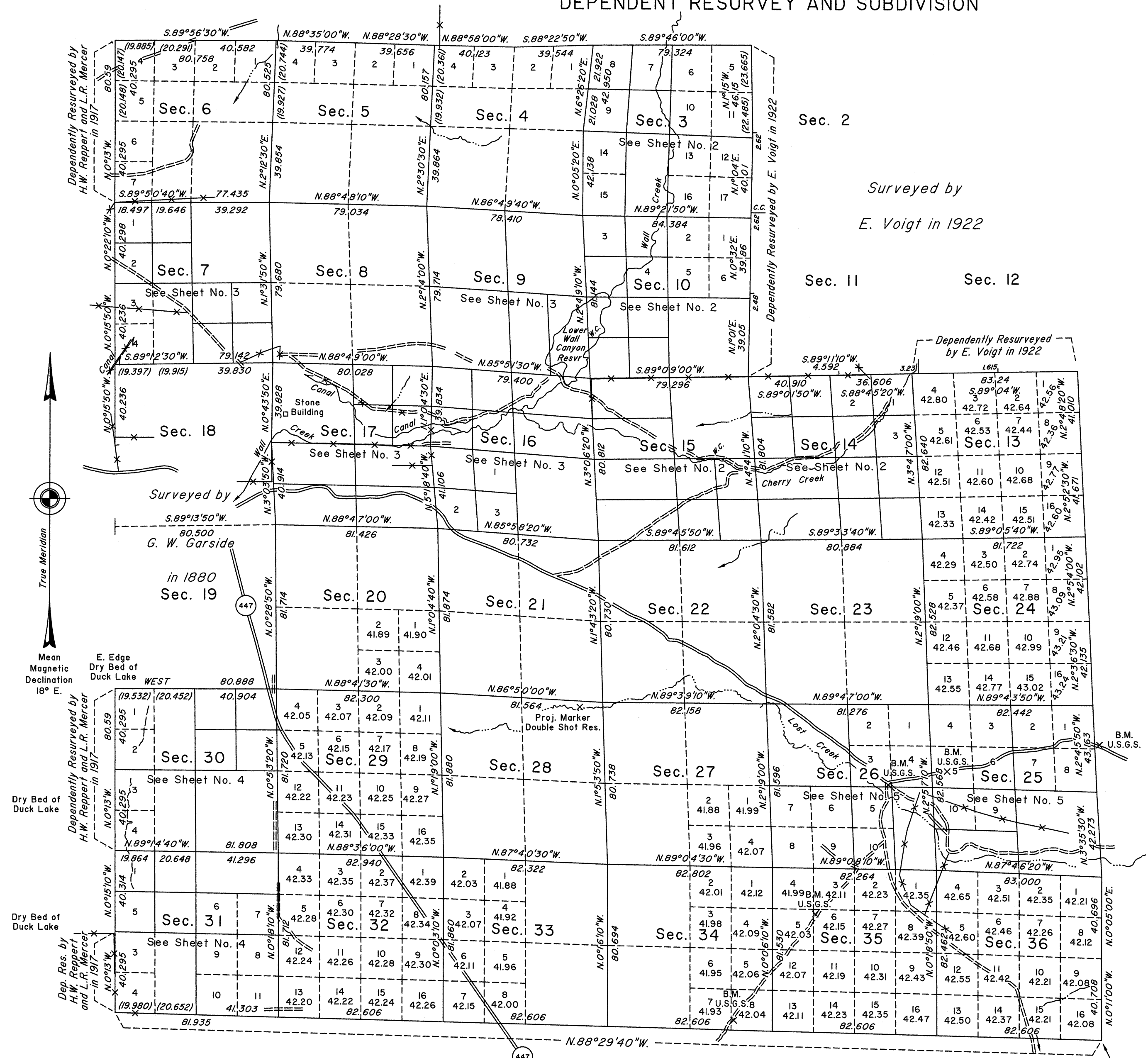


TOWNSHIP 37 NORTH, RANGE 19 EAST, OF THE MOUNT DIABLO MERIDIAN, NEVADA

DEPENDENT RESURVEY AND SUBDIVISION

OFFICIALLY FILED
NEVADA STATE OFFICE
at 10:00 AM on SEP 03 2013



Sec. 2
Sec. 3
Sec. 4
Sec. 5
Sec. 6
Sec. 7
Sec. 8
Sec. 9
Sec. 10
Sec. 11
Sec. 12

Surveyed by
E. Voigt in 1922

A history of surveys is contained in the field notes.

This plat, in five sheets, represents the dependent resurvey of the south boundary, portions of the east, west and north boundaries, and a portion of the subdivisional lines designed to restore the corners in their true original locations according to the best available evidence, and the subdivision of certain sections, Township 37 North, Range 19 East, Mount Diablo Meridian, Nevada.

Except as indicated hereon, the lottings and areas are as shown on the plat approved March, 6, 1880.

Survey executed by Thomas E. Casinger, Cadastral Surveyor, beginning June 29, 1999, and completed May 23, 2001, pursuant to Special Instructions dated June 21, 1999, Amended and Supplemental Special Instructions dated August 28, 2000, and Amended Supplemental Instructions dated August 31, 2001, for Group No. 784, Nevada.

UNITED STATES DEPARTMENT OF THE INTERIOR
BUREAU OF LAND MANAGEMENT

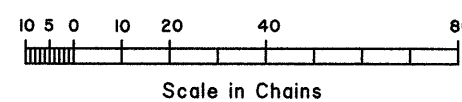
Reno, Nevada August 28, 2013

This plat is strictly conformable to the approved field notes, and the survey, having been correctly executed in accordance with the requirements of law and the regulations of this Bureau, is hereby accepted.

For the Director

Chief Cadastral Surveyor, Nevada

Latitude 41°02'12.094"N.
Longitude 119°47'11.34"W.
NAD 83



T.37N., R.19E., M.D.M.