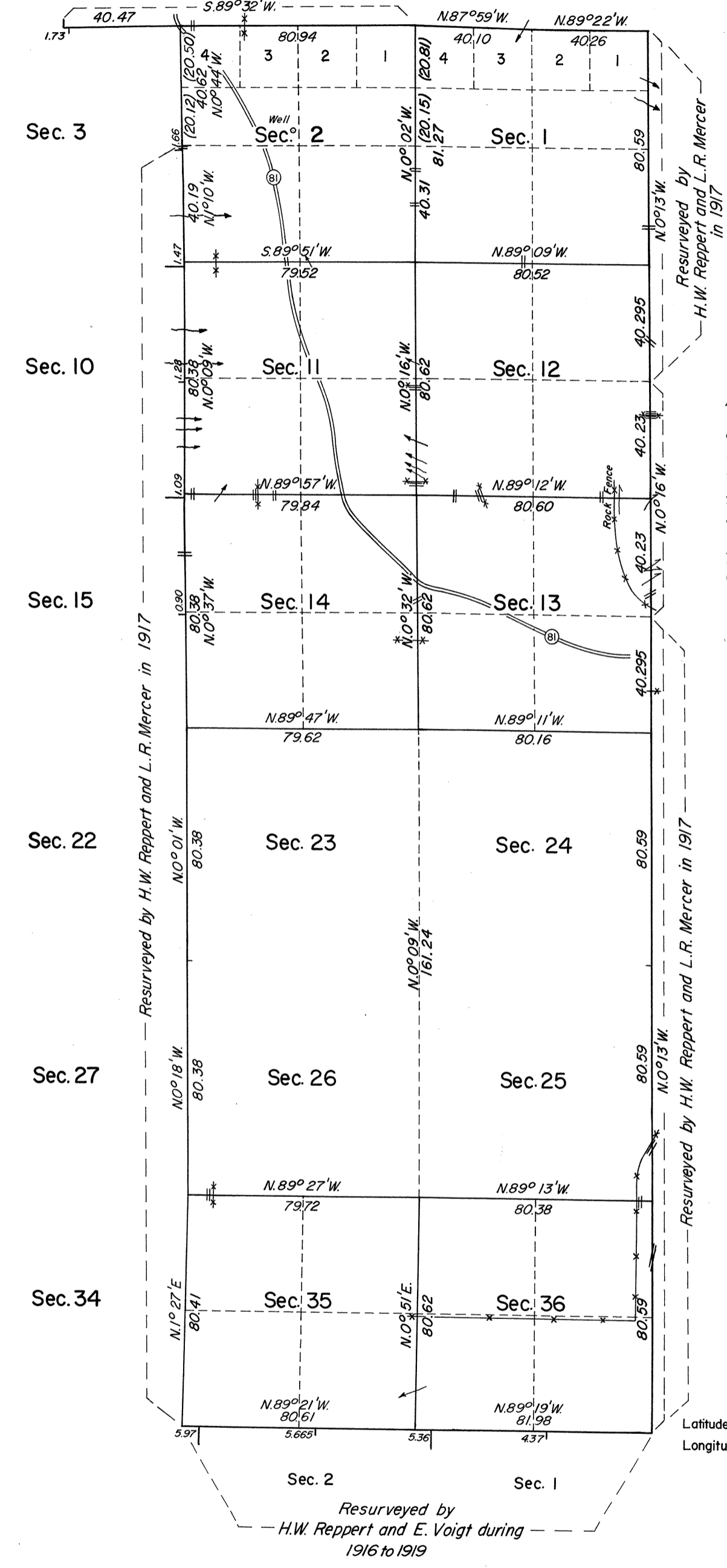


TOWNSHIP 37 NORTH, RANGE 18 EAST, OF THE MOUNT DIABLO MERIDIAN, NEVADA

OFFICIALLY FILED
NEVADA STATE OFFICE
10:00 a.m., July 15, 1976

DEPENDENT RESURVEY



A history of surveys is contained in the field notes.

This plat represents a dependent resurvey of a portion of the north boundary and a portion of the subdivisional lines of T. 37 N., R. 18 E., designed to restore the corners in their true original locations according to the best available evidence.

Lottings and areas are as shown on the plat approved March 6, 1880.

Survey executed by Neil R. Forsyth, Cadastral Surveyor, September 4 to September 14, 1973, under Special Instructions dated August 20, 1973, for Group No. 502, Nevada.

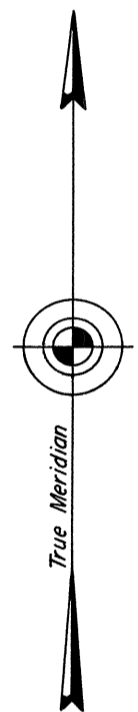
UNITED STATES DEPARTMENT OF THE INTERIOR
BUREAU OF LAND MANAGEMENT
Washington, D.C. June 29, 1976

This plat is strictly conformable to the approved field notes, and the survey, having been correctly executed in accordance with the requirements of law and the regulations of this Bureau, is hereby accepted.

For the Director
J. J. [Signature]

Acting Chief, Division of Cadastral Survey

Latitude $41^{\circ}02'4''$ N.
Longitude $119^{\circ}54'4''$ W.



Mean Magnetic Declination
 17° E.

Surveyed by
H.W. Reppert and L.R. Mercer
in 1917

