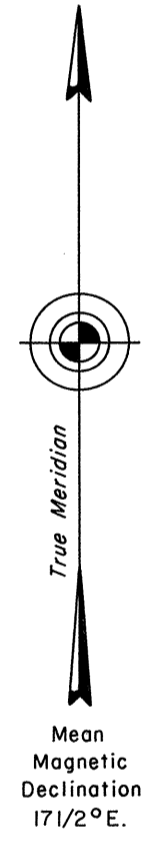
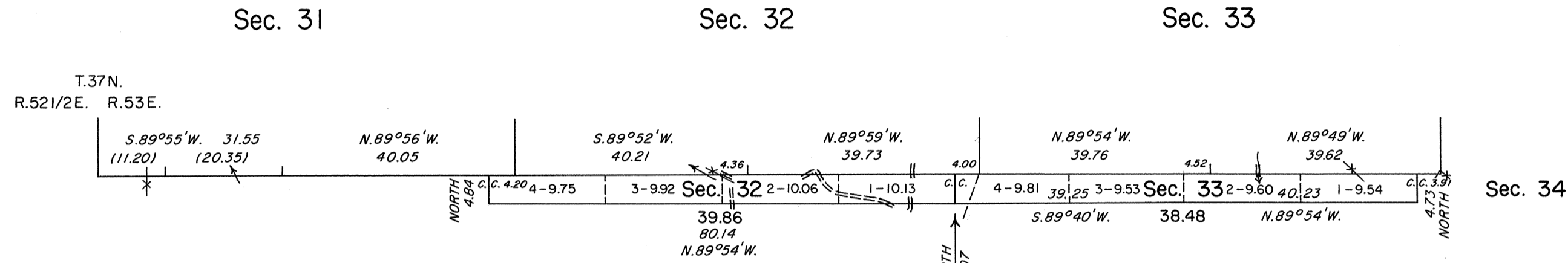


TOWNSHIP 36 1/2 NORTH, RANGE 53 EAST, OF THE MOUNT DIABLO MERIDIAN, NEVADA  
DEPENDENT RESURVEY AND SURVEY



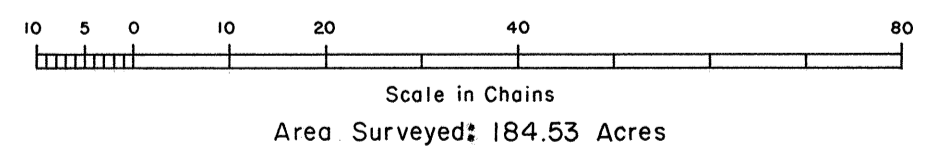
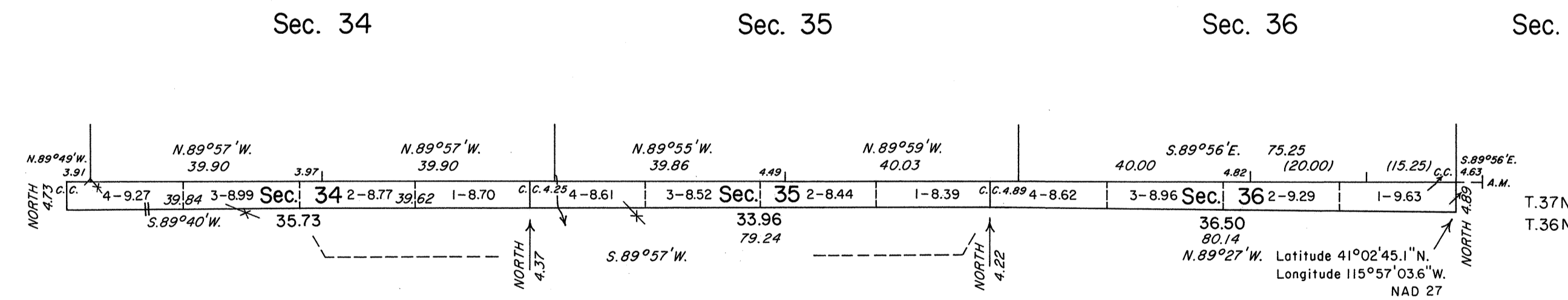
"MAGGIE"  
U.S.C. & G.S.

A history of surveys is contained in the field notes.

The south boundary of Township 37 North, Range 53 East and a portion of the west boundary of Township 37 North, Range 54 East were dependently resurveyed concurrently under this same Group.

This plat represents the dependent resurvey of a portion of the north boundary of Township 36 North, Range 53 East, designed to restore the corners in their true original locations according to the best available evidence; and the survey of the subdivisional lines of Township 36 1/2 North, Range 53 East, Mount Diablo Meridian, Nevada.

Survey executed by James A. Mack, Cadastral Surveyor, beginning August 3, 1988, and completed November 22, 1988, pursuant to Special Instructions dated August 3, 1988, and Supplemental Special Instructions dated November 10, 1988, for Group No. 662, Nevada.



UNITED STATES DEPARTMENT OF THE INTERIOR  
BUREAU OF LAND MANAGEMENT

Reno, Nevada      March 24, 1994

This plat is strictly conformable to the approved field notes, and the survey, having been correctly executed in accordance with the requirements of law and the regulations of this Bureau, is hereby accepted.

For the Director

*John S. Parrish*

Chief Cadastral Surveyor, Nevada