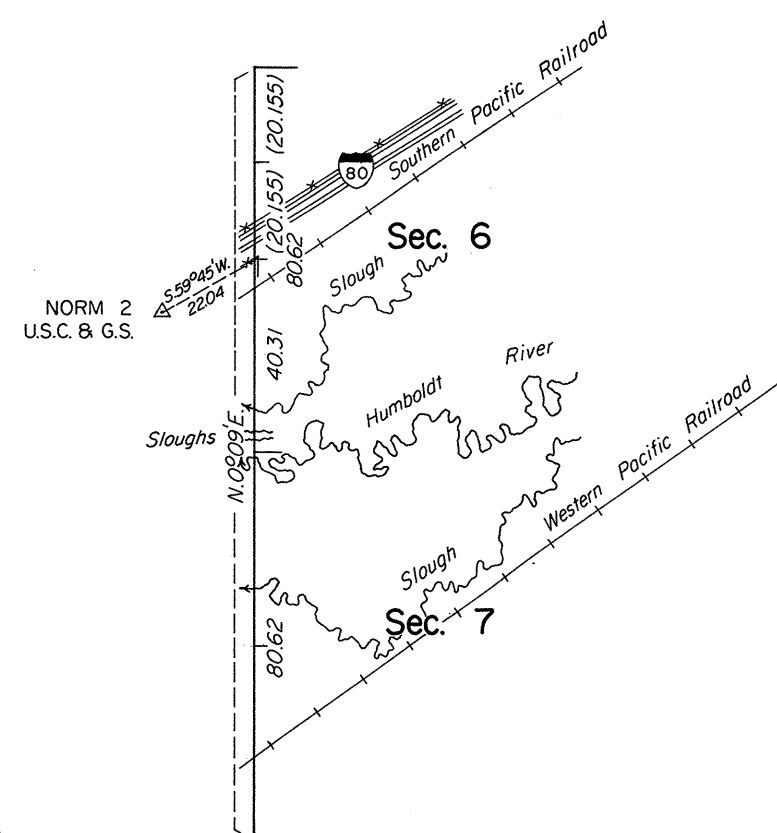


# TOWNSHIP 36 NORTH, RANGE 59 EAST, OF THE MOUNT DIABLO MERIDIAN, NEVADA

## DEPENDENT RESURVEY



A history of surveys is contained in the field notes.

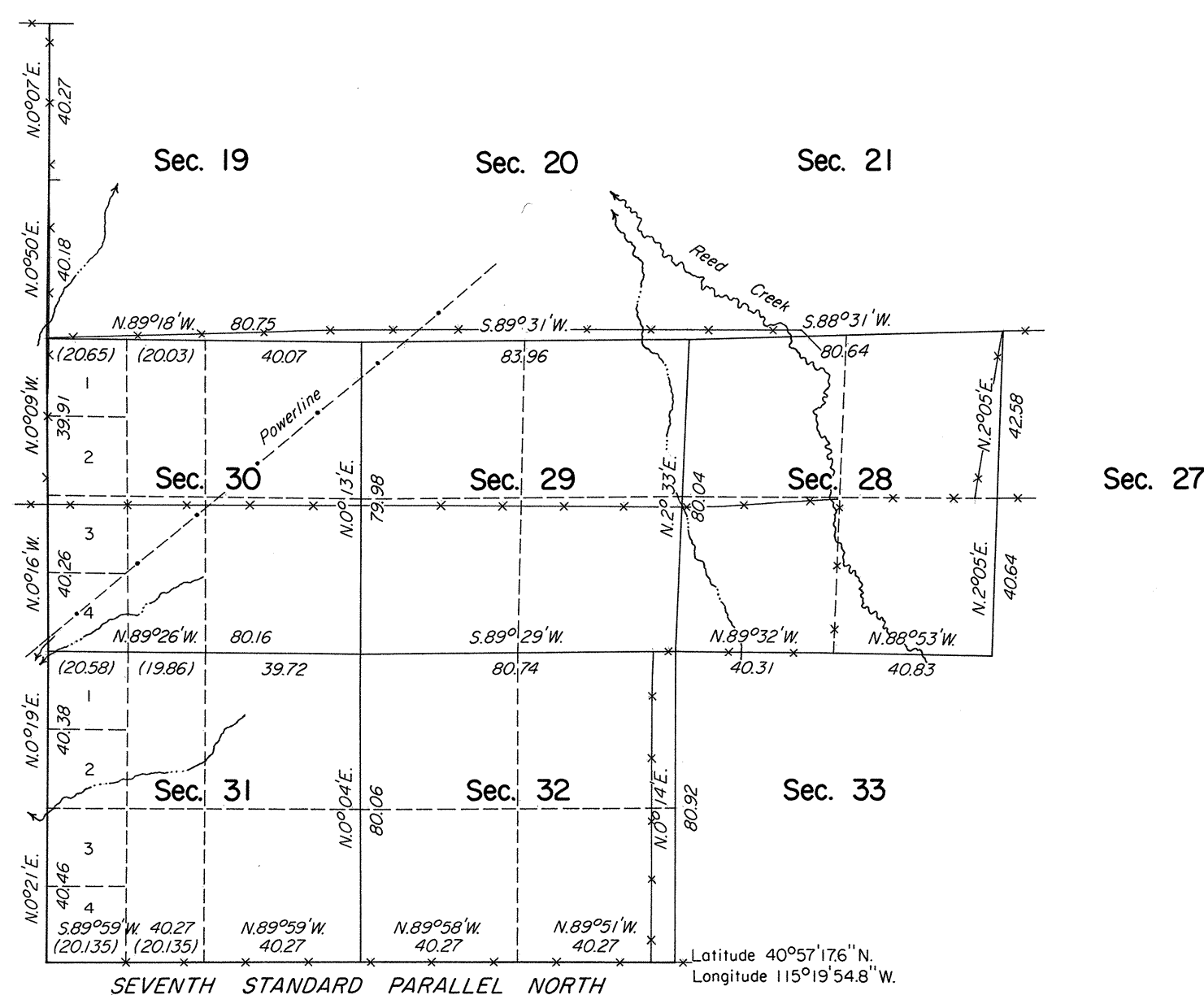
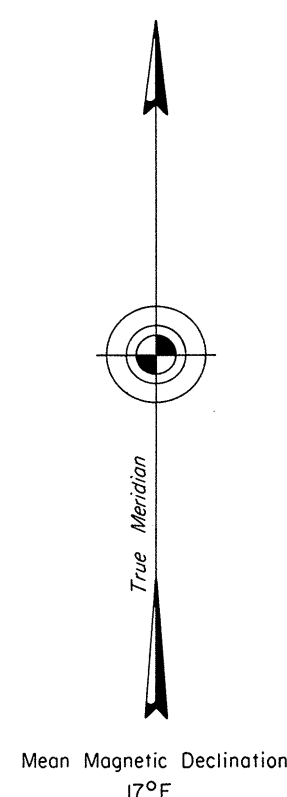
This plat represents the dependent resurvey of the Seventh Standard Parallel North, through a portion of R. 59 E., and a portion of the west boundary and a portion of the subdivisional lines, designed to restore the corners in their true original locations according to the best available evidence, T. 36 N., R. 59 E., Mount Diablo Meridian, Nevada.

The lottings and areas are as shown on the plat approved November 8, 1869.

Survey executed by Duane R. Garoutte, Cadastral Surveyor, beginning June 30, 1976, and completed August 3, 1976, pursuant to Special Instructions dated March 31, 1976, for Group No. 537, Nevada.

Sec. 18

Surveyed by C. C. Tracy in 1869



UNITED STATES DEPARTMENT OF THE INTERIOR  
BUREAU OF LAND MANAGEMENT  
Denver, Colorado April 16, 1980

This plat is strictly conformable to the approved field notes, and the survey, having been correctly executed in accordance with the requirements of law and the regulations of this Bureau, is hereby accepted.

For the Director

*[Signature]*

Chief, Cadastral Survey  
Examination and Approval Staff

