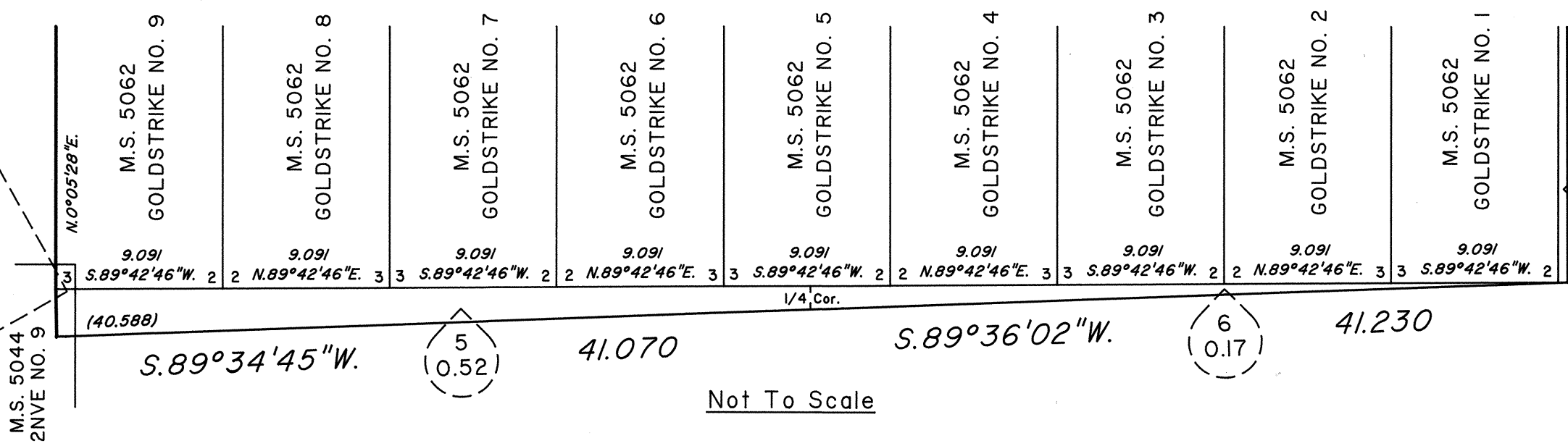
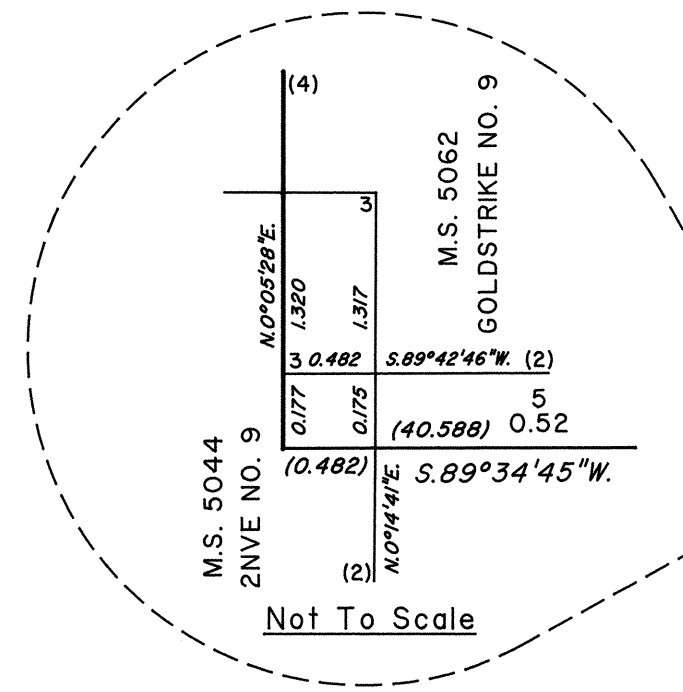
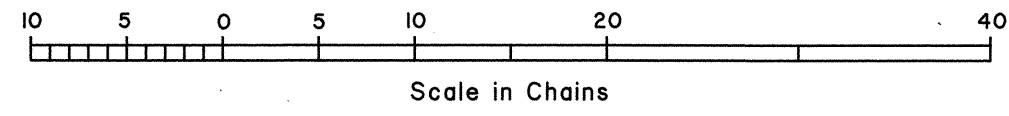
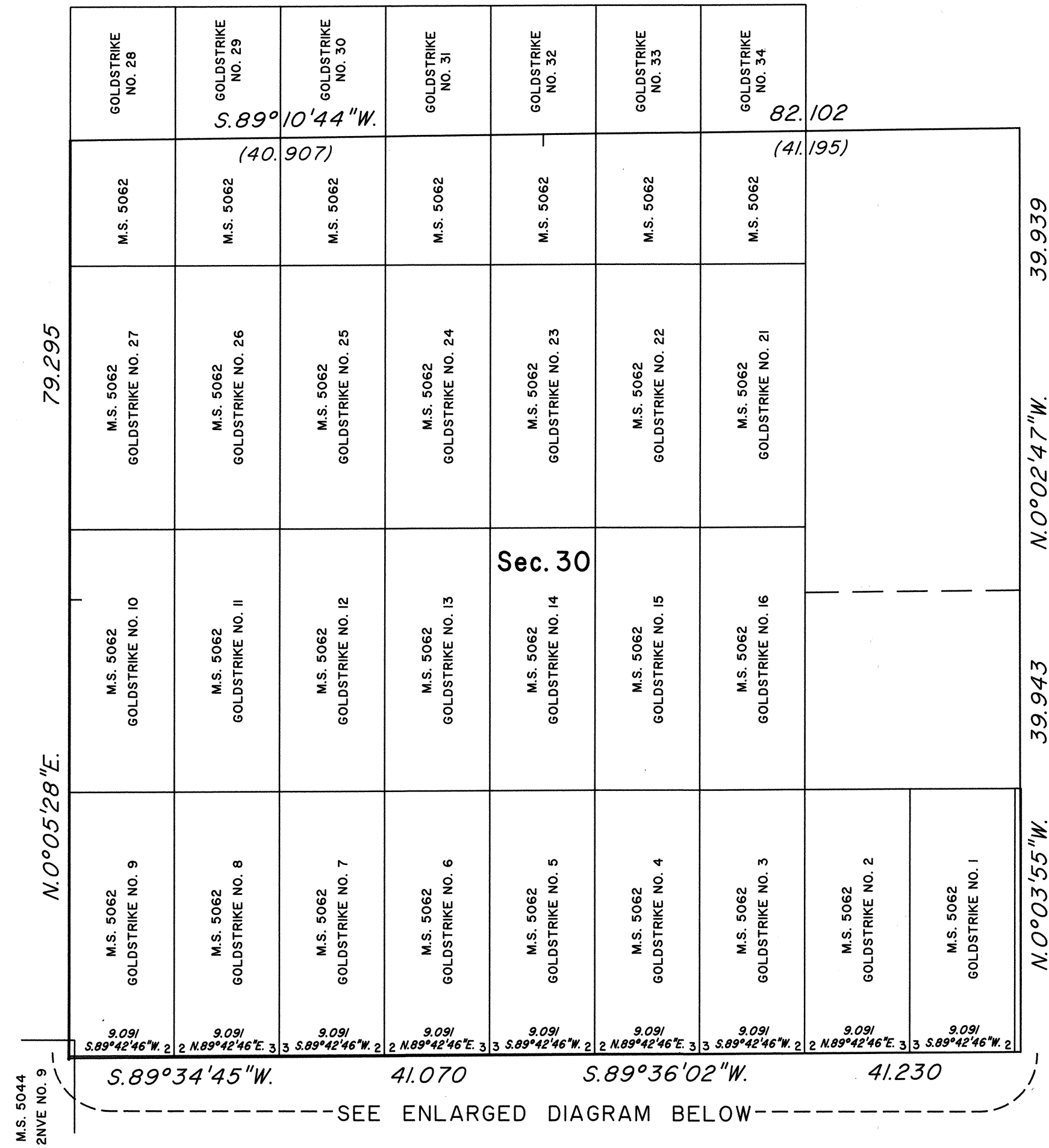
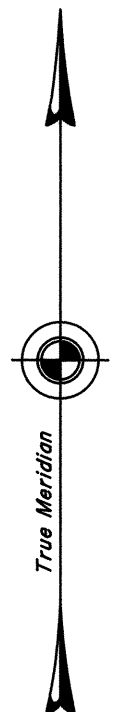


TOWNSHIP 36 NORTH, RANGE 50 EAST, OF THE MOUNT DIABLO MERIDIAN, NEVADA
SUPPLEMENTAL PLAT OF SECTION 30



This plat, showing amended lottings created by the segregation of Mineral Survey No. 5044 and Mineral Survey No. 5062 in section 30, T. 36 N., R. 50 E., Mount Diablo Meridian, Nevada, is based on the plats approved February 13, 1873, and January 13, 1885, the plat accepted April 3, 1987, and the mineral survey records.

Refer to land status records for ownership of mineral surveys or other private claims.

UNITED STATES DEPARTMENT OF THE INTERIOR
BUREAU OF LAND MANAGEMENT
Reno, Nevada June 26, 1998

This plat, showing amended lottings, is based upon the official records, and having been correctly prepared in accordance with the regulations of this Bureau, is hereby accepted.

For the Director
Robert H. Thompson
Acting Chief Cadastral Surveyor, Nevada