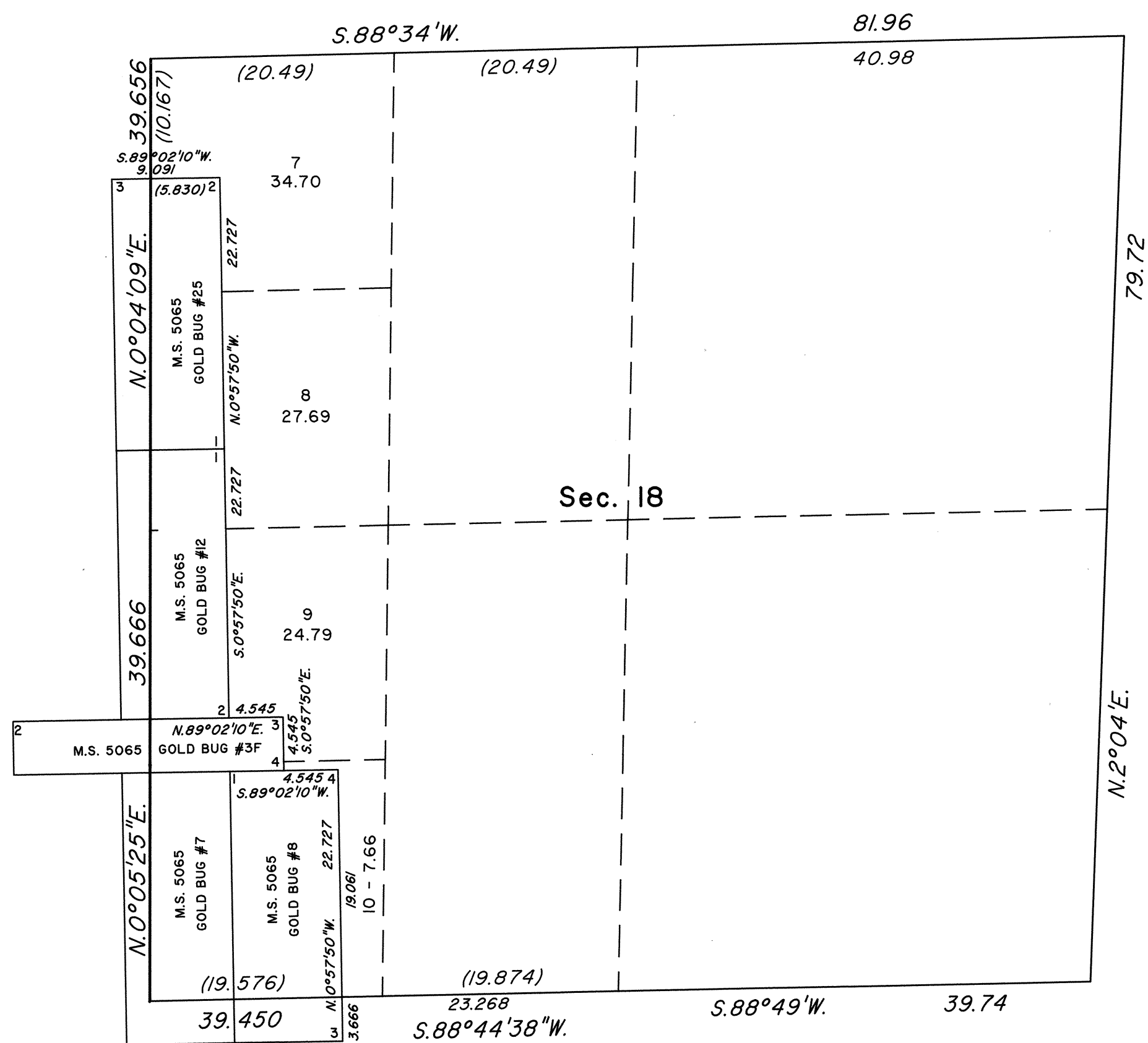
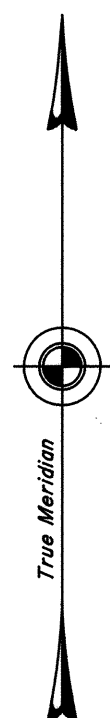


TOWNSHIP 36 NORTH, RANGE 50 EAST, OF THE MOUNT DIABLO MERIDIAN, NEVADA
SUPPLEMENTAL PLAT OF SECTION 18



This plat, showing amended lottings created by the segregation of Mineral Survey No. 5065 in section 18, T. 36 N., R. 50 E., Mount Diablo Meridian, Nevada, is based on the plats approved February 13, 1873 and January 13, 1885, the plat accepted April 3, 1987, and the mineral survey records.

Refer to land status records for ownership of mineral surveys or other private claims.

UNITED STATES DEPARTMENT OF THE INTERIOR
BUREAU OF LAND MANAGEMENT

Reno, Nevada June 26, 1998

This plat, showing amended lottings, is based upon the official records, and having been correctly prepared in accordance with the regulations of this Bureau, is hereby accepted.

For the Director

Robert H. Thompson

Acting Chief Cadastral Surveyor, Nevada

