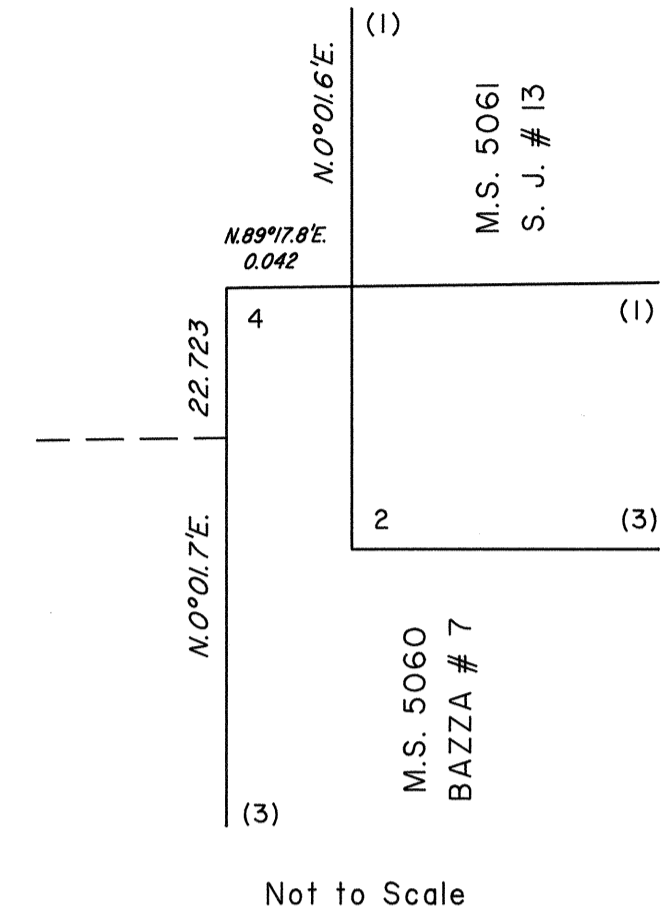
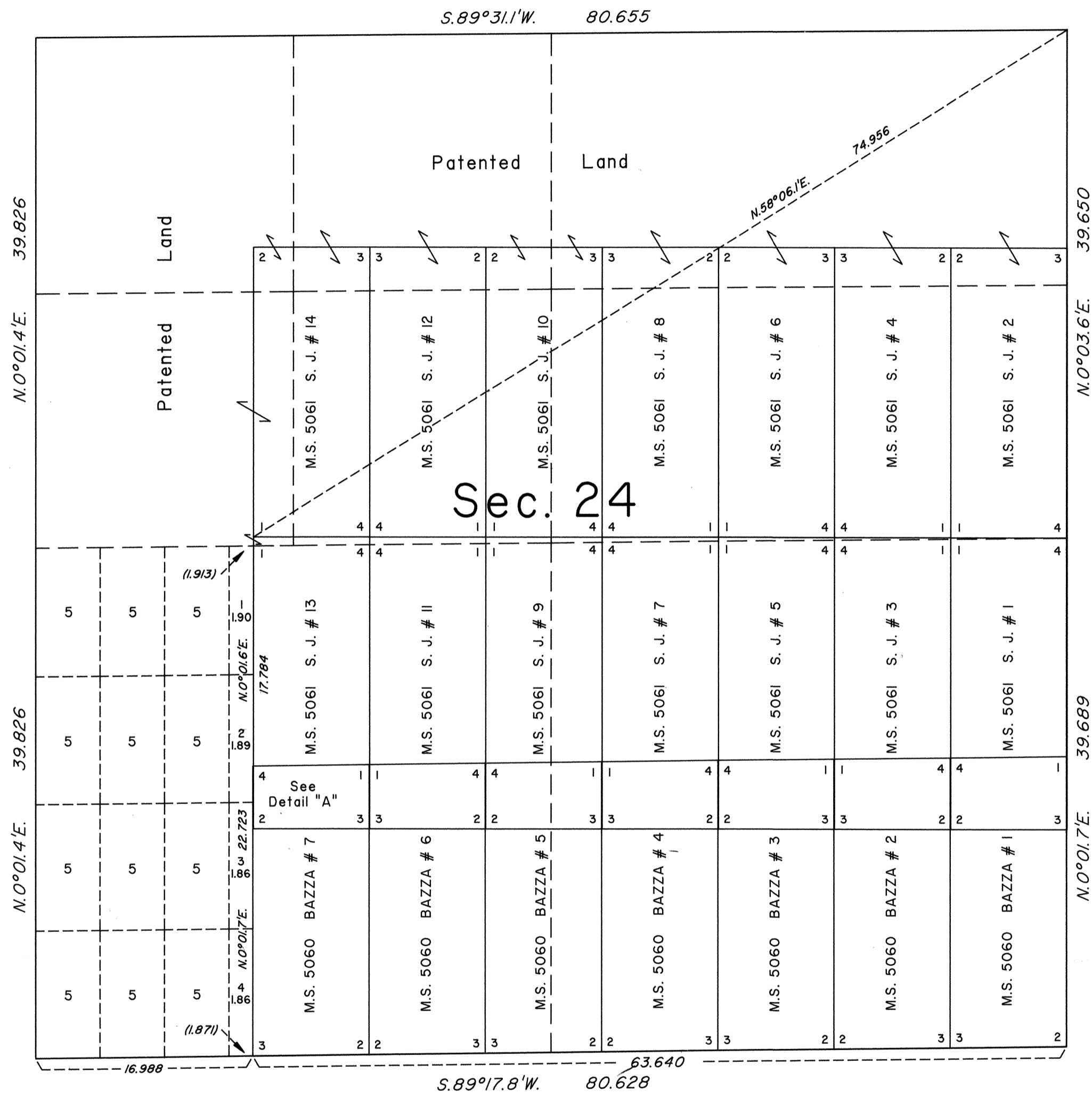


TOWNSHIP 36 NORTH, RANGE 49 EAST, OF THE MOUNT DIABLO MERIDIAN, NEVADA  
SUPPLEMENTAL PLAT OF SECTION 24

DETAIL "A"

OFFICIALLY FILED  
NEVADA STATE OFFICE  
at 10:00 AM on July 9, 1993



This plat showing new lottings created by the segregation of Mineral Survey No. 5060 and Mineral Survey No. 5061 in section 24, T. 36 N., R. 49 E., Mount Diablo Meridian, Nevada, is based on the plat approved February 13, 1873, and the plats for Mineral Surveys 5060 and 5061, approved February 20, 1992 and March 11, 1992.

Bearings and distances along section lines are based on supplemental data provided in the mineral survey records. The data shown in parentheses along the lot boundaries are derived by calculation.

UNITED STATES DEPARTMENT OF THE INTERIOR  
BUREAU OF LAND MANAGEMENT

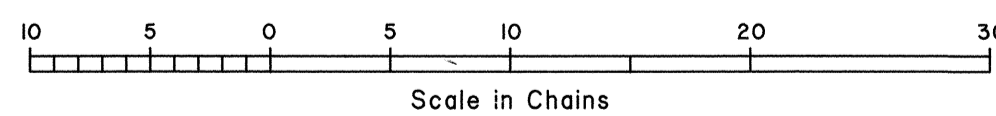
Reno, Nevada July 7, 1993

This plat, showing new lottings, is based upon the official records, and having been correctly prepared in accordance with the regulations of this Bureau, is hereby accepted.

For the Director

*John S. Parrish*

Chief Cadastral Surveyor, Nevada



63

RHT