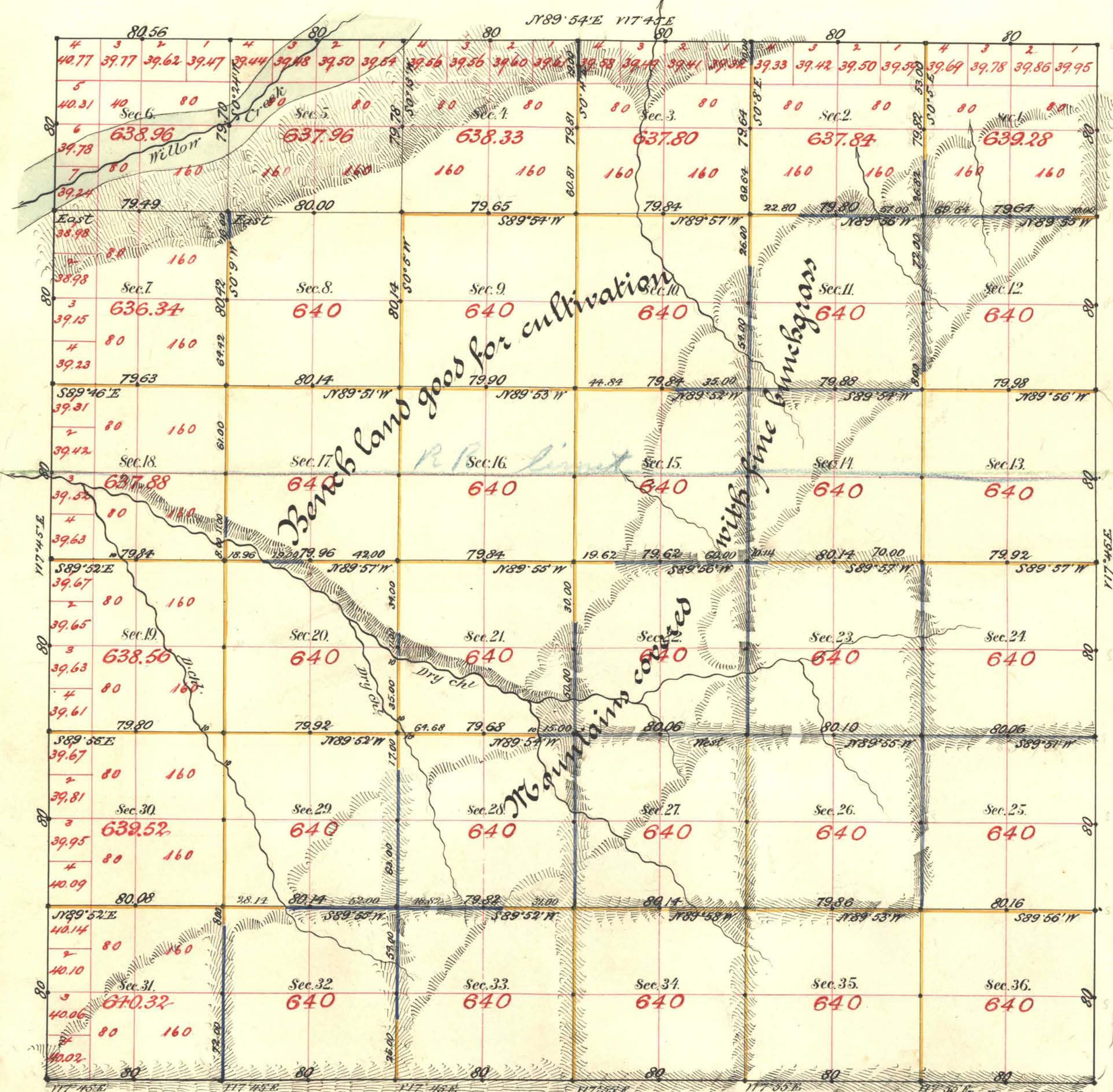


TOWNSHIP N^o 36 NORTH RANGE N^o 48 EAST MOUNT DIABLO MERIDIAN



Aggregate Area of Public Land surveyed by
 Hatch, Eaton & Smythe Nov. 16th 1842 2,074.00 Ac.
 by McWilliam & Bridges Nov. 14th 1854 19,948.79 "
 Aggregate 22,022.79 "

Old work commenced Dec. 10th 1842
 " " completed " " "
 New " commenced " " 1854
 " " completed " " "

Old work approved by C. D. Davis Dec. 13th 1873

Subdiv. run with a Var. of 17.45° E.

Surveys Designated.	By Whom Surveyed.	Date of Contract.	Amount of Surveys.	When Surveyed.
Township lines	Hatch, Eaton & Smythe	Nov. 16 th 1842	21 - 26 - 36	1842
Subdiv. black	"	"	3 - 78 - 27	Dec.
" yellow	McWilliam & Bridges	Nov. 14 th 1854	35 - 51 - 75	1854
" blue	"	"	19 - 25 - 52	"

For commission see T 35
 The above Map of Township No. 36 North of Range No. 48 East
 Mount Diablo Meridian is strictly conformable to the field notes of the survey
 thereof on file in this Office, which have been examined and approved.
 Surveyor General's Office, Reno, *B. B. Conring*
 Nevada, March 31st 1885
 U.S. Surv. Gen'l of Nevada.