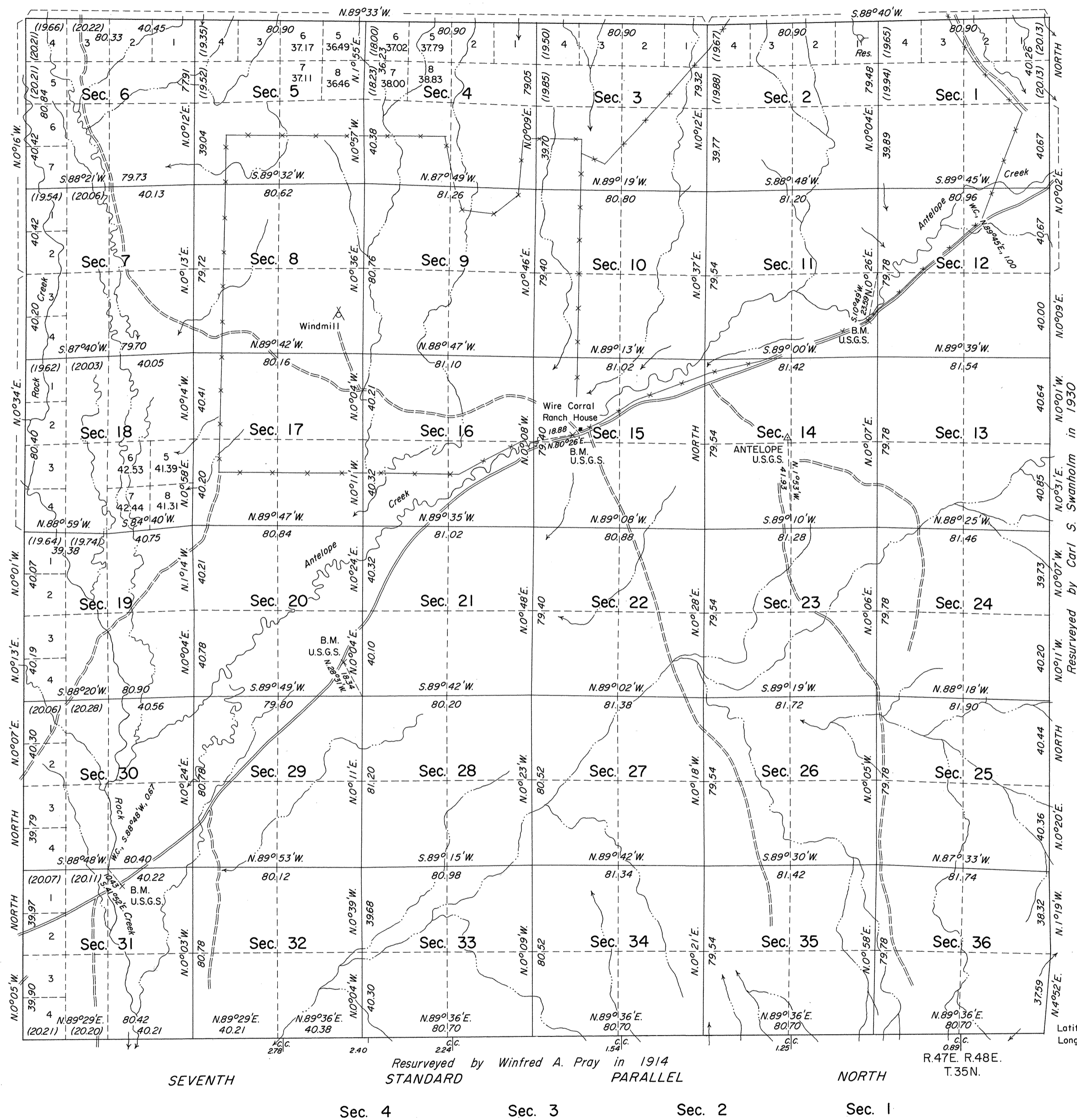
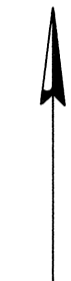
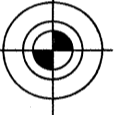


TOWNSHIP 36 NORTH, RANGE 47 EAST, OF THE MOUNT DIABLO MERIDIAN, NEVADA

DEPENDENT RESURVEY

OFFICIALLY FILED
NEVADA STATE OFFICE
10:00 AM 3/5/1973




 True Meridian

 Mean Magnetic Declination
 17 1/2° E.

History of the earlier surveys is contained in the field notes.

A dependent resurvey of the west boundary was executed concurrently under T. 36 N., R. 46 E., of this group.

This plat represents a dependent resurvey of the north boundary and subdivisional lines of T. 36 N., R. 47 E., Mount Diablo Meridian, Nevada, designed to restore the corners in their true original locations according to the best available evidence.

Except as indicated hereon, lottings and areas are as shown on the plat approved February 13, 1873.

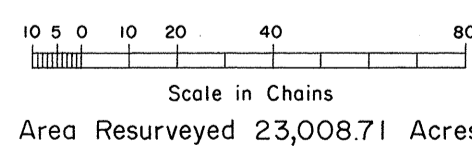
Survey executed by Robert A. Pratt, Cadastral Surveyor, August 17 to September 16, 1971, under Special Instructions dated May 26, 1971, for Group No. 480, Nevada.

UNITED STATES DEPARTMENT OF THE INTERIOR
BUREAU OF LAND MANAGEMENT
Washington, D.C. December 18, 1972

This plat is strictly conformable to the approved field notes, and the survey, having been correctly executed in accordance with the requirements of law and the regulations of this Bureau, is hereby accepted.

For the Director

Chief, Division of Cadastral Survey



Latitude 40°56'48.1"N.
Longitude 116°36'19.3"W.

Resurveyed by Winfred A. Pray in 1914
STANDARD PARALLEL
Sec. 4 Sec. 3 Sec. 2 Sec. 1