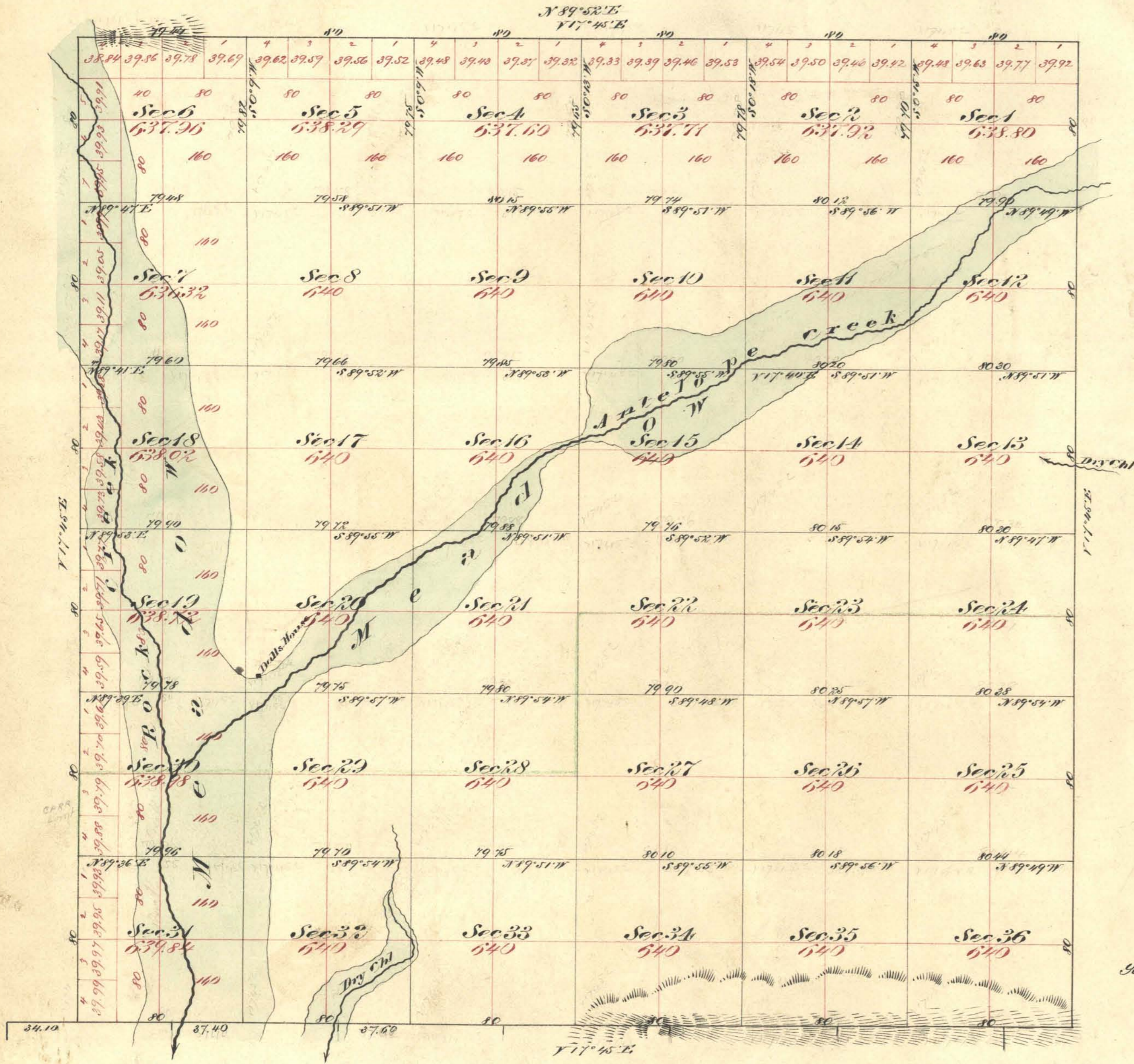


Township N^o 36 North

Range N^o 47 East

Mount Diablo Meridian



Aggregate area of public land surveyed 23020.16 Acres

Commenced Dec. 7th 1872
Completed " 13th "

Subdivision lines not otherwise marked run with a Var of 17.45° E

Surveys Designated	By Whom Surveyed	Date of Contract	Am't of Surveys	When Surveyed	Tr ^o Cont.
Township lines	Hatch, Eaton & Smyles	Nov 16 1872	M. C. L. 23 - 79 - 44	Dec. 1872	54
Subdivisions	"	"	59 - 76 - 78	"	"

The above Map of Township N 36 North, Range N 47 East, Mount Diablo Meridian is strictly conformable to the field notes of surveys thereof on file in this office which have been examined and approved
U. S. Surveyor General's Office
Virginia City, Nevada
February 15th 1873

E. S. Davis
U. S. Surveyor General Nevada