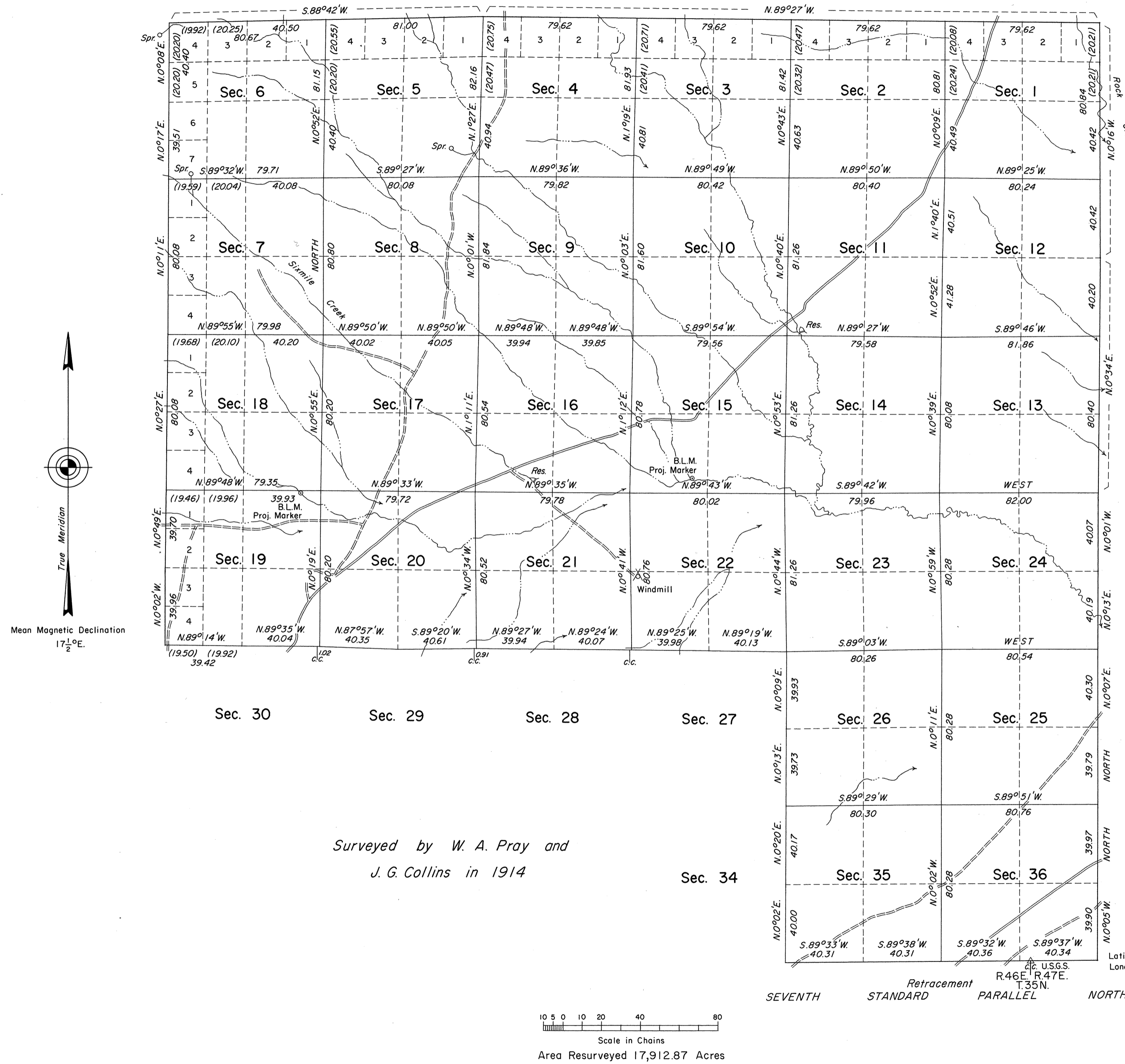


TOWNSHIP 36 NORTH, RANGE 46 EAST, OF THE MOUNT DIABLO MERIDIAN, NEVADA

DEPENDENT RESURVEY

OFFICIALLY FILED
NEVADA STATE OFFICE
10:00 AM 3/5/1973



History of the earlier surveys is contained in the field notes.

This plat represents a dependent resurvey of the east and north boundaries, a portion of the west boundary and a portion of the subdivisional lines of T. 36 N., R. 46 E., Mount Diablo Meridian, Nevada, designed to restore the corners in their true original locations according to the best available evidence, and the retracement of a portion of the Seventh Standard Parallel North, through Range 46 East.

Lottings and areas are as shown on the plat approved February 13, 1873.

Survey executed by Robert A. Pratt, Cadastral Surveyor, July 6 to August 16, 1971, under Special Instructions dated May 26, 1971 for Group No. 480, Nevada.

UNITED STATES DEPARTMENT OF THE INTERIOR
BUREAU OF LAND MANAGEMENT
Washington, D.C. December 18, 1972

This plat is strictly conformable to the approved field notes, and the survey, having been correctly executed in accordance with the requirements of law and the regulations of this Bureau, is hereby accepted.

For the Director

Chief, Division of Cadastral Survey

Surveyed by W. A. Pray and
J. G. Collins in 1914

Sec. 34

Scale in Chains
Area Resurveyed 17,912.87 Acres

Latitude 40°56'45.8\"/>

Retracement SEVENTH STANDARD PARALLEL NORTH