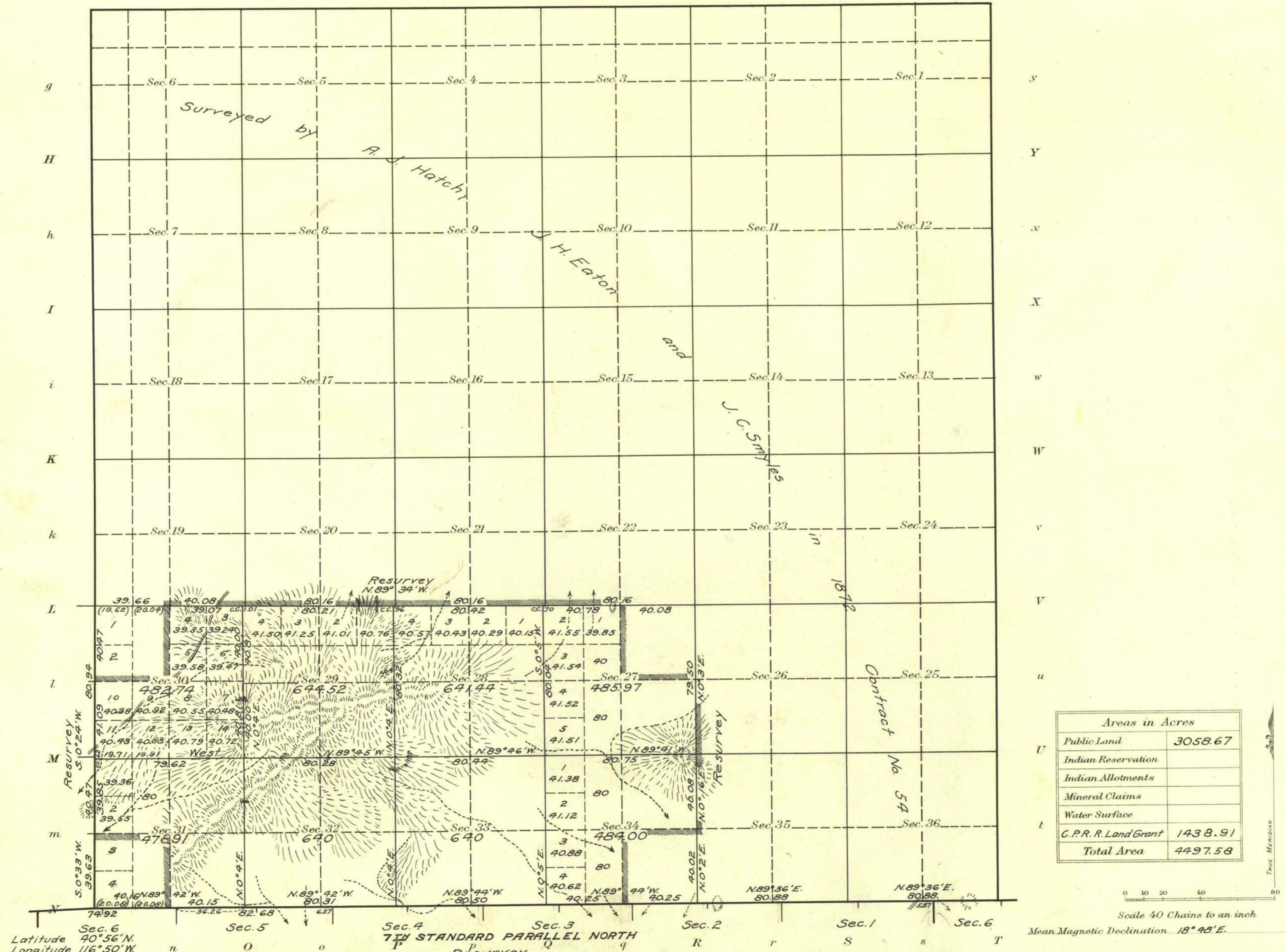


Township No. 36 North Range No. 46 East Mt. Diablo Meridian, Nevada

G f F e E d D c C b B a A



Areas in Acres	
Public Land	3058.67
Indian Reservation	
Indian Allotments	
Mineral Claims	
Water Surface	
G.P.R. Land Grant	1438.91
<b>Total Area</b>	<b>4497.58</b>

Latitude 40° 56' N.  
Longitude 116° 50' W.

Surveys Designated	By Whom Surveyed	Group No.	Date of Instructions	Amount of Surveys			When Surveyed	
				Mls.	chs.	lks.	Began	Completed
7th St. Par. N. (res.)	W.A. Pray & J.G. Collins	24	Feb. 25, 1913	6	3	38	Oct. 25, 1913	Aug. 21, 1914
W. Boundary (res.)	"	"	"	2	1	09	Nov. 8, "	" 15, "
Subdivisions (res.)	"	"	"	5	79	82	" 9, "	" " "
"	"	"	"	10	2	26	" " "	" " "

The above map of Township No. 36 North Range No. 46 East of the Mt. Diablo Meridian Nevada is strictly conformable to the field notes of the survey thereof on file in this office, which have been examined and approved

U. S. Surveyor General's Office.  
Reno, Nevada January 29, 1916

*John B. Sullivan*  
Surveyor General.