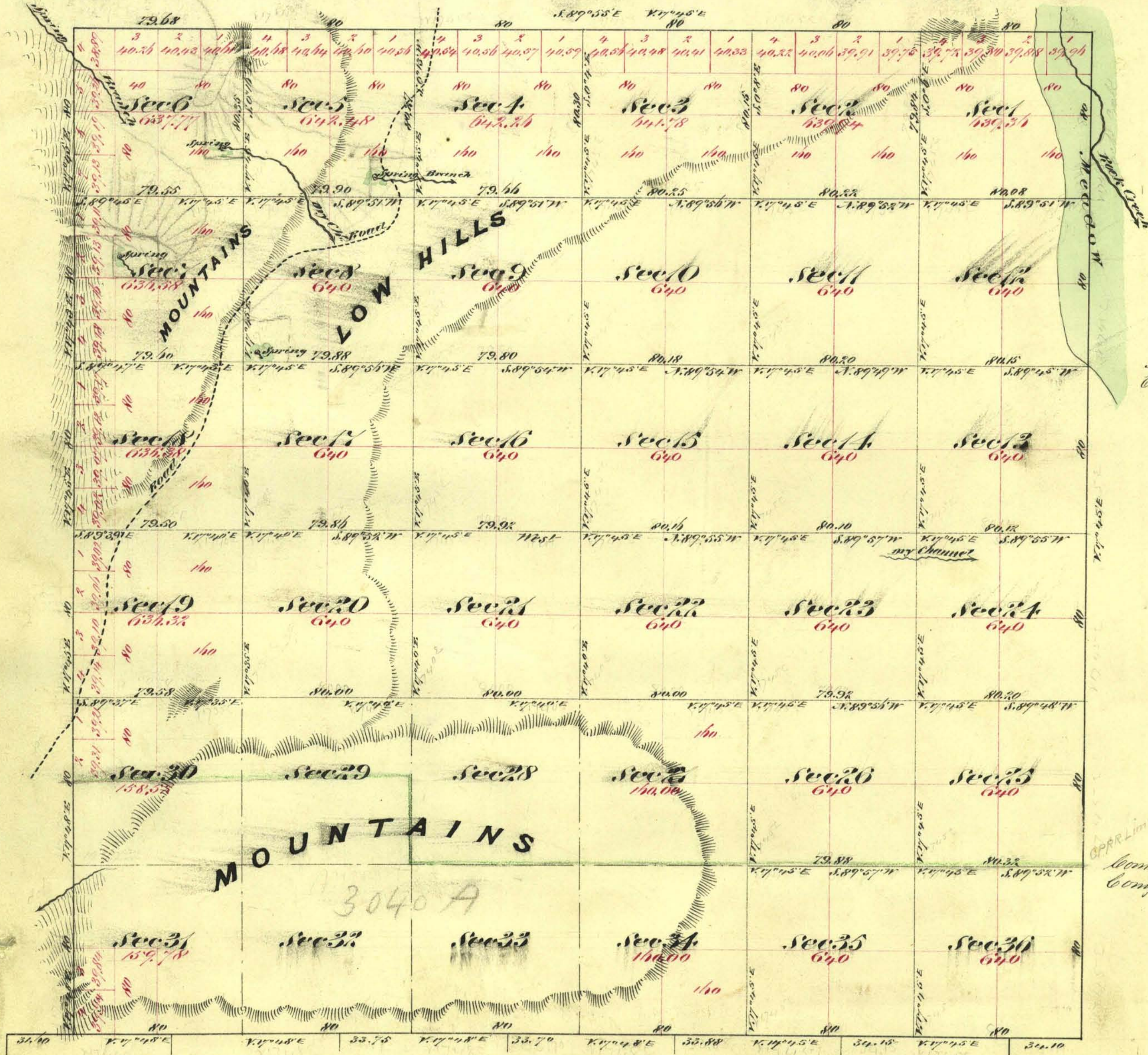


Township N^o 36 North

Range N^o 46 East

Mount Diablo Meridian



Aggregate Area of Public Land (Surveyed) 18,551.20 Acres
 Estimated " " Mountains (unsurveyed) 4,478.34 "
 Aggregate 23,029.54 "

Commenced December 14th 1872
 Completed " 19th "

Survey Designated	By Whom Surveyed	Date of Contract	Acres of Survey	When Surveyed
Township Lines	A. Hatch, M. Eaton, J. S. Smyler	November 16 th 1872	23,79,68	1872
Subdivision Lines	" " " "	" " " "	19,79,94	December 1872

779 Cor.
54

The above Map of Township N36 North, Range N46 East, Mount Diablo Meridian, is strictly conformable to the field notes of the surveys thereof on file in this office which have been examined and approved.
 W. P. Sawyer, General Office
 Virginia City, Nevada
 February 15th 1873

E. S. Davis