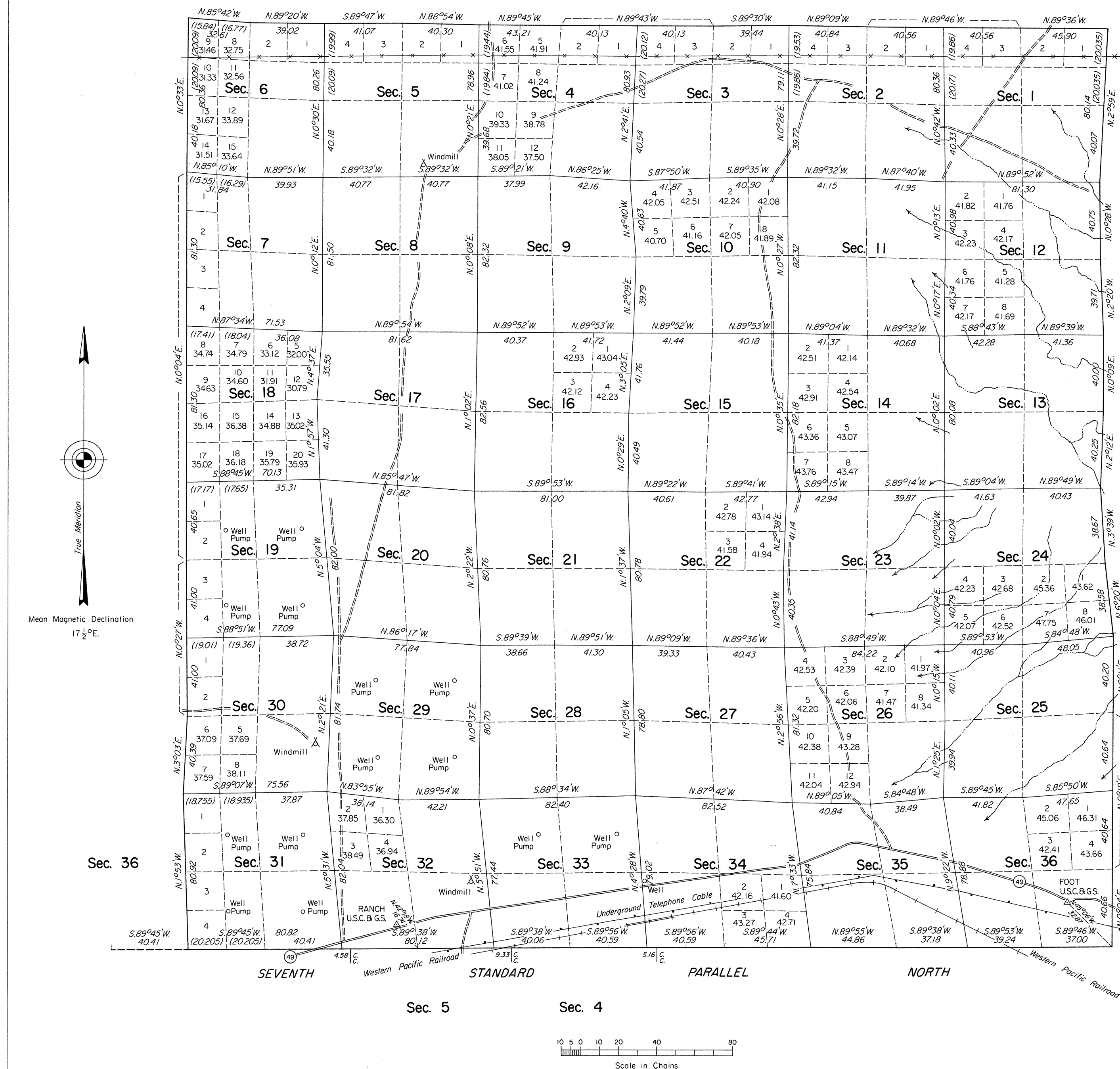


# TOWNSHIP 36 NORTH, RANGE 34 EAST, OF THE MOUNT DIABLO MERIDIAN, NEVADA

## DEPENDENT RESURVEY

OFFICIALLY FILED  
NEVADA STATE OFFICE  
10:00 A.M., August 18, 1977



A history of surveys is contained in the field notes.

This plat represents a dependent resurvey of the Seventh Standard Parallel North, through R. 34 E., and the west, east and north boundaries and the subdivisional lines of T. 36 N., R. 34 E., designed to restore the corners in their true original locations according to the best available evidence.

Except as shown hereon, the lottings and areas are as shown on the plat approved March 20, 1891.

Survey executed by James R. Munson, Cadastral Surveyor, March 31 to May 24, 1976, under Special Instructions dated March 9, 1976, for Group No. 532, Nevada.

UNITED STATES DEPARTMENT OF THE INTERIOR  
BUREAU OF LAND MANAGEMENT  
Washington, D.C. July 26, 1977

This plat is strictly conformable to the approved field notes, and the survey, having been correctly executed in accordance with the requirements of law and the regulations of this Bureau, is hereby accepted.

For the Director

*Bernard W. Foster*  
Chief, Division of Cadastral Survey

Latitude 40°56'41.8" N.  
Longitude 118°05'53.7" W.