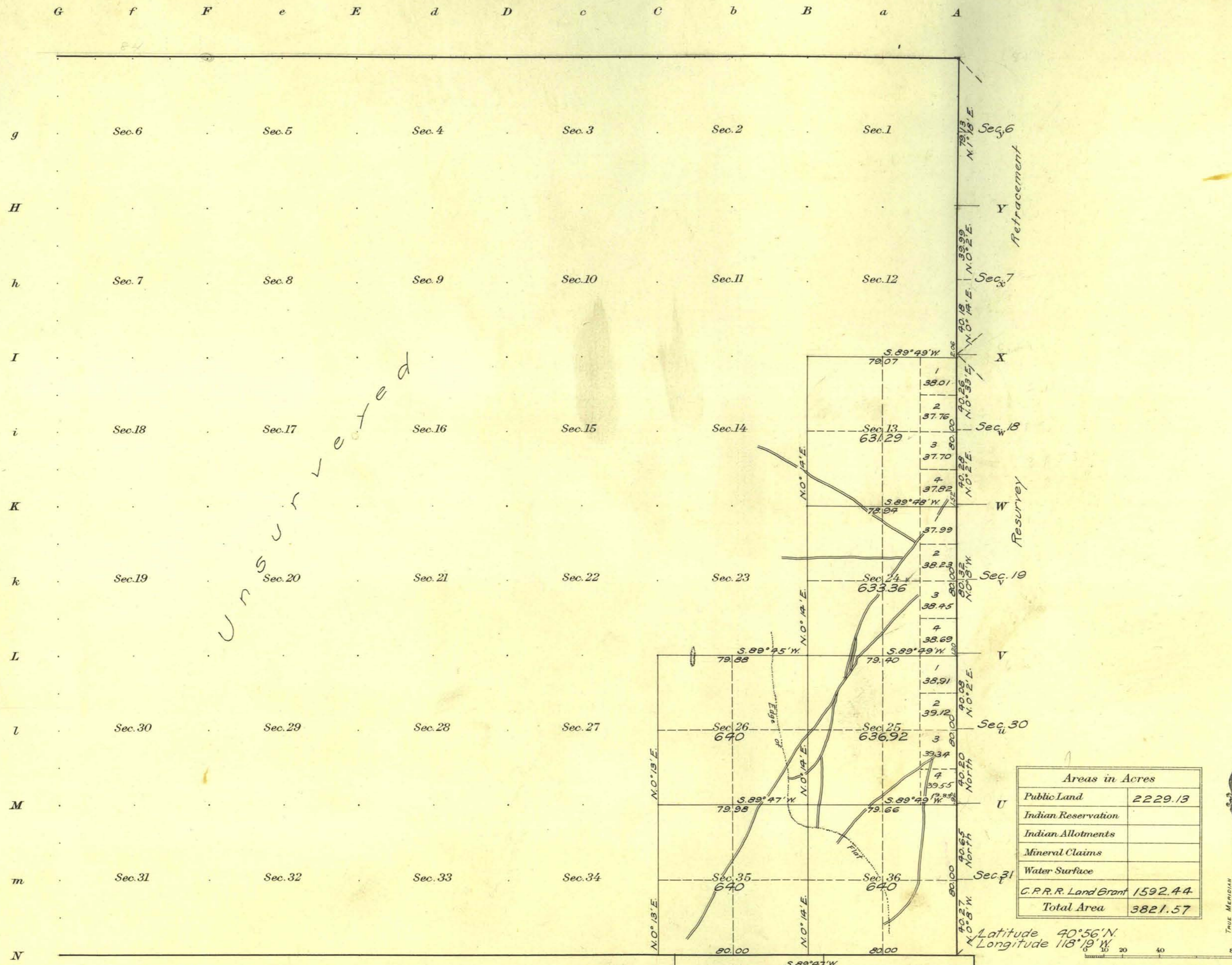


Township No. 36 North Range No. 32 East Mt Diablo Meridian, Nevada



UNSURVEYED

Surveys Designated	By Whom Surveyed	Contract		Amount of Surveys		When Surveyed		
		No.	Date	Mls.	chs.	lks.	Begun	Completed
Seventh St. Par. N. (Res)	Newton E. Potter	14	Aug. 22, 1911	2	00	00	Oct. 8, 1912	Oct. 8, 1912
E. Boundary (Res)	"	"	"	6	1	36	"	Nov. 21, "
Subdivisions	"	"	"	11	76	93	Nov. 22, "	" 23, "

SEVENTH STANDARD PARALLEL NORTH
 Scale 40 Chains to an inch
 Mean Magnetic Declination 18° 30' E.

The above map of Township No. 36 North Range No. 32 East of the Mt Diablo Meridian Nevada is strictly conformable to the field notes of the survey thereof on file in this office, which have been examined and approved
 U. S. Surveyor General's Office.
 Reno, Nevada April 11, 1914

Matthew Kyle
 Surveyor General.

S89°47'W 42.21 to 0 1/4 36 800 24