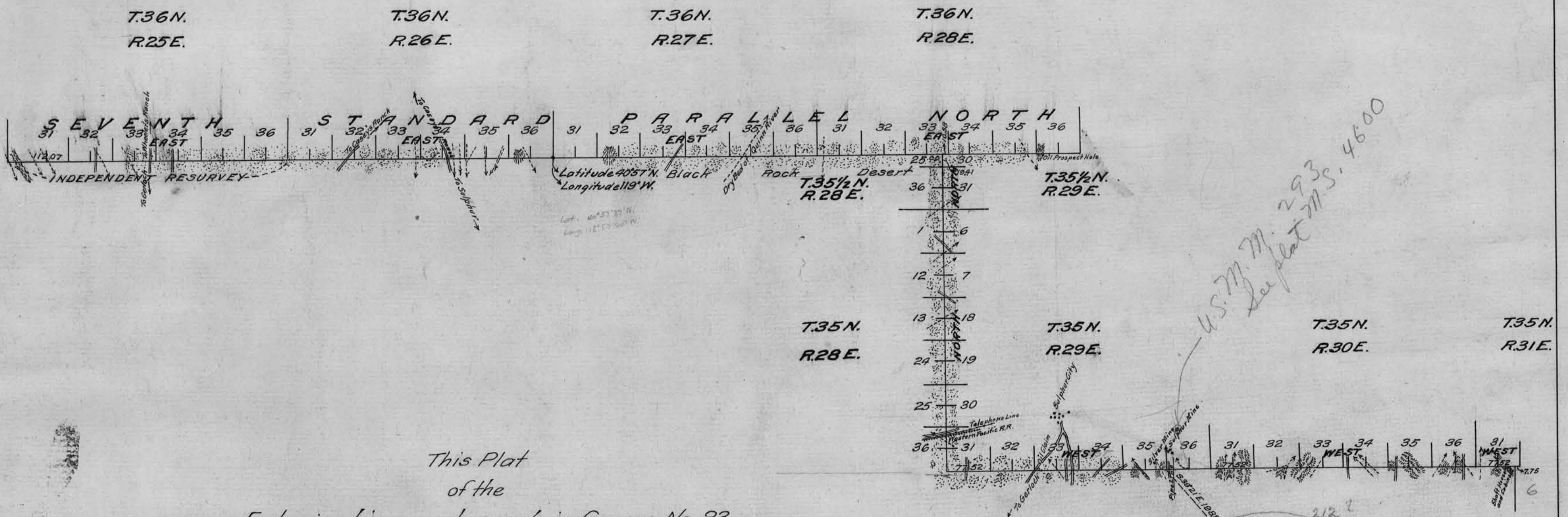


TOWNSHIP EXTERIORS



This Plat
of the
Exterior Lines embraced in Group No. 83
Mt. Diablo Base and Meridian, Nevada
is strictly conformable to the field notes of the survey thereof
by
Emil Voigt, U.S. Cadastral Engineer
under Special Instructions
Dated April 6, 1920
which have been examined approved and filed in this office
U.S. Surveyor General's Office
Reno, Nevada, October 22, 1921. *J.E. Selden*
U.S. Surveyor General
for Nevada

212?
U.S.M.M. No. 293
Error. See report from
R. E. Tilden attached to letter
dated Sep. 16, 1924 (M.S. 4600,
letter No. 8933). Presumably
U.S.L.M. No. 212.

Surveys Designated	By Whom Surveyed	Group			When Surveyed			
		No.	Date	Mls.	Chs.	Lhs.	Began	Completed
7th St Par. North Range Line	Emil Voigt U.S. Cadastral Engineer	83	April 6, 1920	24	32	07	Sept. 18, 1920	Nov. 4, 1920
S. Bdy of Tp 35 thru Rs 28, 30 and 31				7	19	41	Nov. 10, 1920	Nov. 14, 1920
				12	72	56	Nov. 3, 1920	Nov. 10, 1920