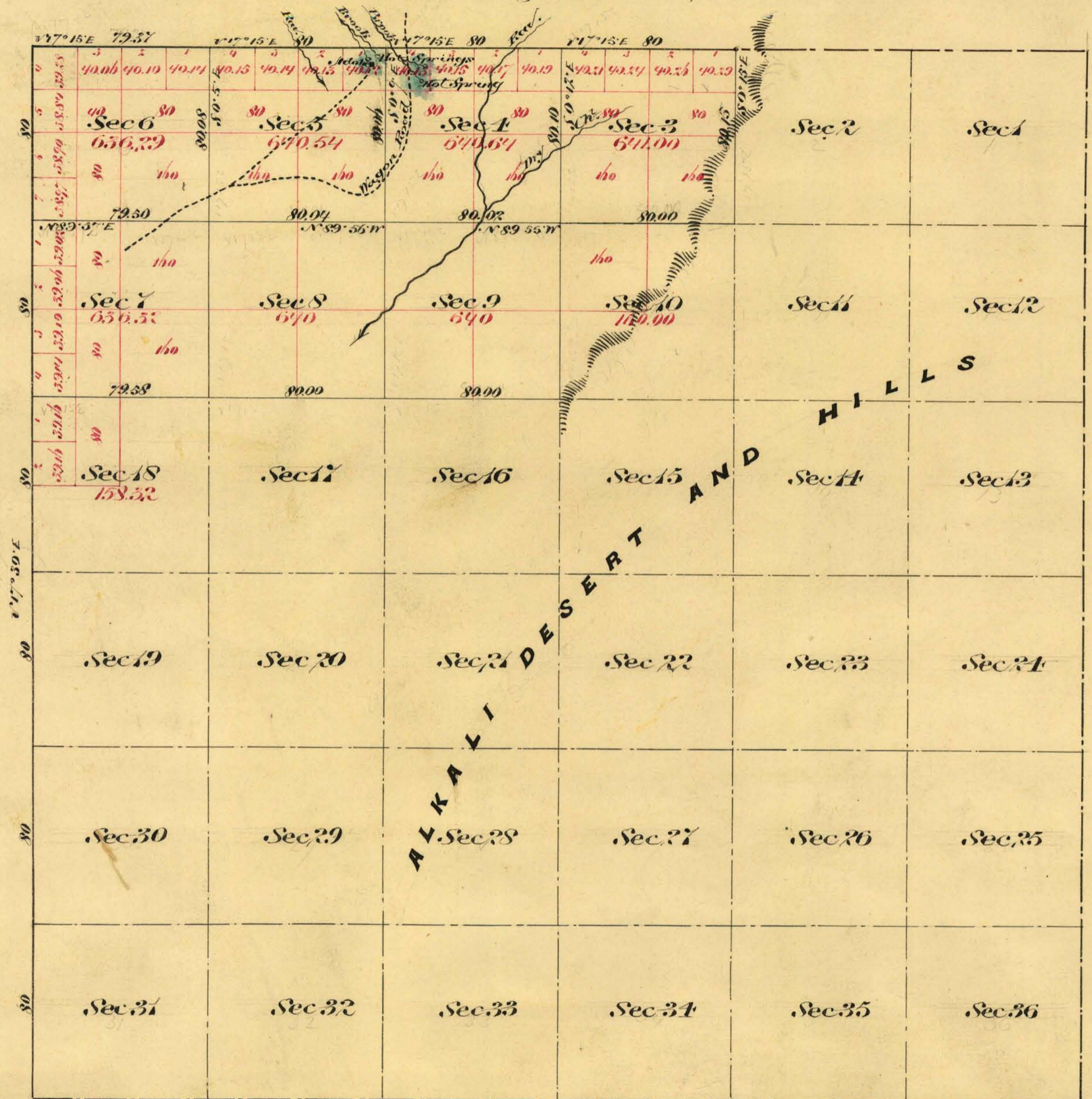


Township N^o 36 North Range N^o 26 East Mount Diablo Meridian



Aggregate area of Public Land Surveyed 17,725.11 acres
 Estimated Alkali desert Unsurveyed 18,254.96 "
 Aggregate 35,980.07 "

Commenced February 2nd 1877
 Completed 3rd "

Subdivision lines not otherwise noted run with the line of 17 1/2 E.

Surveys design ^d	By whom surveyed	Date of contract	Am ^t of survey Ac. R ^{ds} P ^{chs}	When surveyed	No. Cont.
West boundary	Geo. W. Garside	Dec. 7 th 1872	6-00-00	1872	55
North "	" " "	Nov. 11 th 1876	4-00-00	1877	74
Subdivisions	" " "	" " "	13-79-53	February "	"

The above Map of Township N^o 36 North Range N^o 26 East Mount Diablo Meridian is strictly conformable to the field notes of the survey thereof on file in this office which have been examined and approved
 U.S. Surveyor Gen^l Office
 Virginia City Neb.
 April 5th 1877

0556

T36N, R26E.

C. S. Davis
 U.S. Surveyor Gen^l of Nev.
 VD