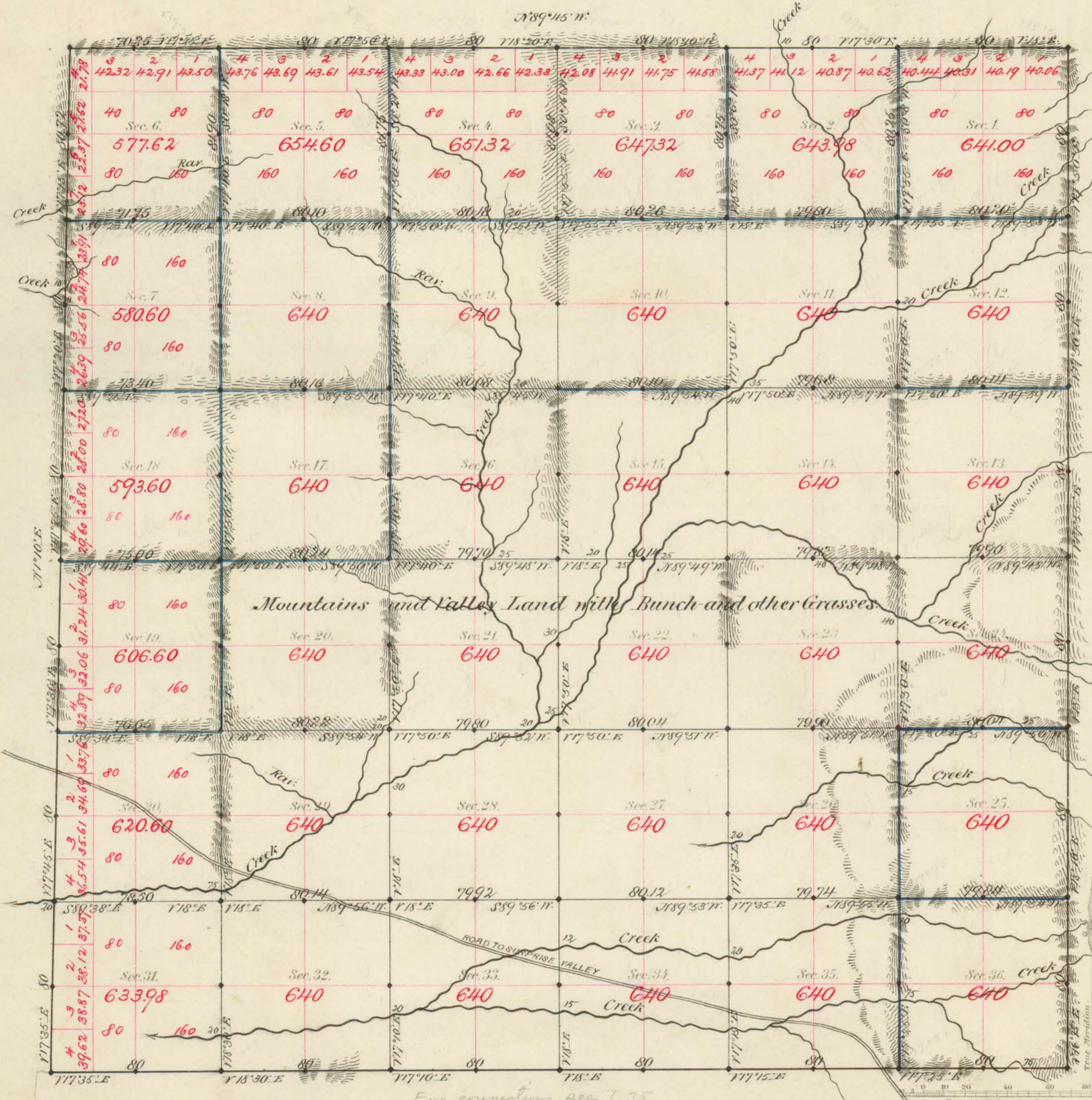


TOWNSHIP N^o 36 NORTH RANGE N^o 20 EAST MOUNT DIABLO MERIDIAN



Aggregate Area of Public Land Surveyed 22851.22 Acres

Commenced Nov. 14th 1852.
Completed " 31st "

Subdivisions not noted, run with a Variation of 17'45" East.

Surveys Designated	By Whom Surveyed	Date of Contract	Amount of Surveys	When Surveyed
W. P. M.	J. W. Burdick	Dec. 16 th 1859	26 26 80	1850
"	J. S. Ward	June 29 th 1852	23 70 97	1852
Subdiv ^{ns} block	"	"	33 78 78	Nov
"	"	"	25 62 51	"

The above Map of Township N. 36 North of Range N. 20 East of Mt. Diablo Meridian is strictly conformable to the field notes of the survey thereof on file in this office, which have been examined and approved.

Surveyor General's Office,
Reno, Nevada
Dec. 9th 1882

J. S. Davis
Sur. Gen. Nev.