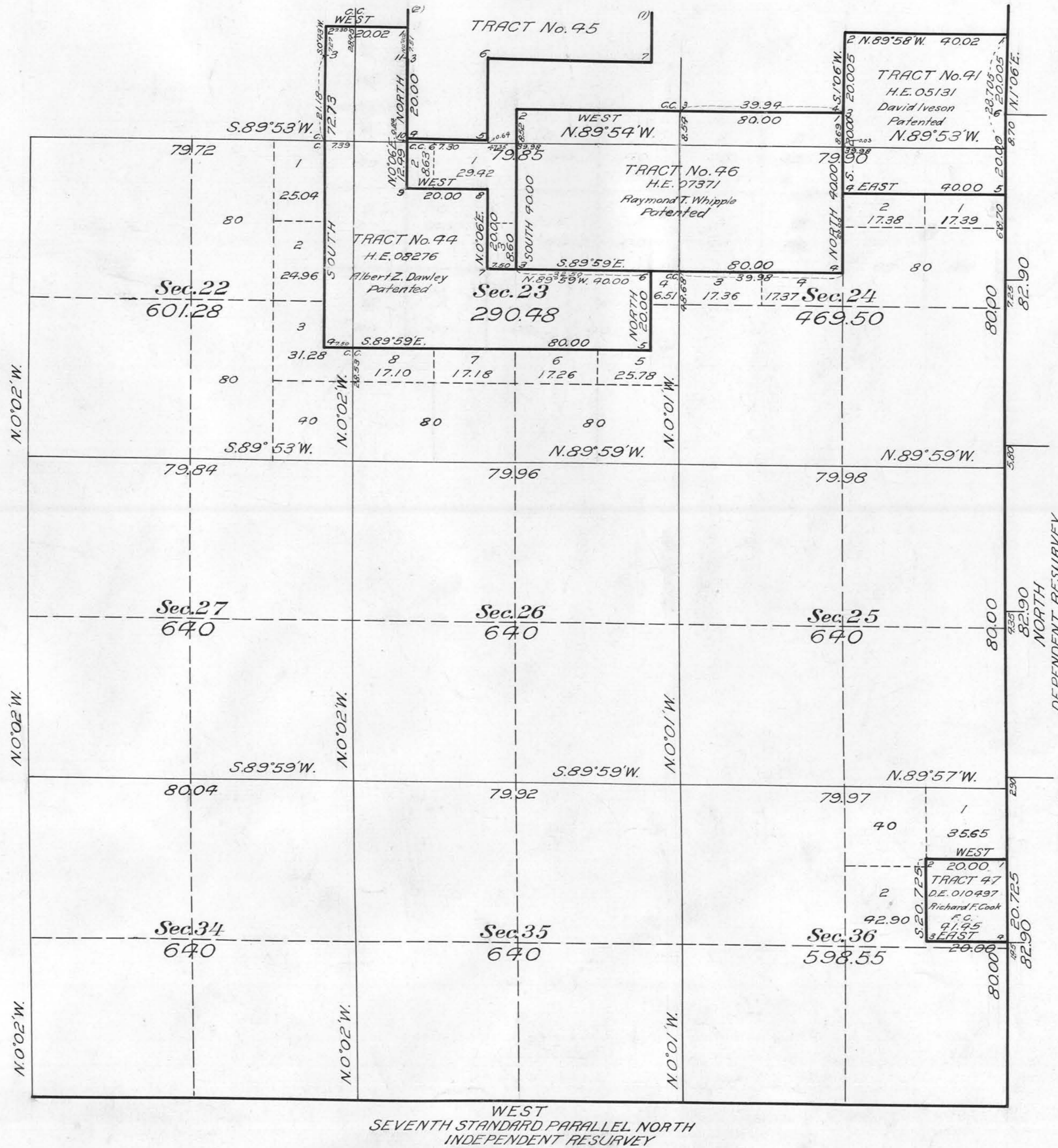


Supplemental Plat No 2
Portion of Resurveys in Township No 36 North, Range No 18 East, Mt. Diablo Meridian, Nevada.

Sections 22, 23, 24, 25, 26, 27, 34, 35 and 36.
Scale, 20 Chains to 1 inch.

IN THREE SHEETS
SHEET No 3



DEPENDENT RESURVEY

This Supplemental Plat of a portion of the Resurvey of Township No. 36 North, Range No. 18 East of the Mt. Diablo Meridian, Nevada, is strictly conformable to the field notes of the resurvey thereof on file in this office, which have been examined and approved.

U.S. Surveyor General's Office,
Reno, Nevada, June 5, 1923

J. C. Seldin
Surveyor General.

WEST
SEVENTH STANDARD PARALLEL NORTH
INDEPENDENT RESURVEY