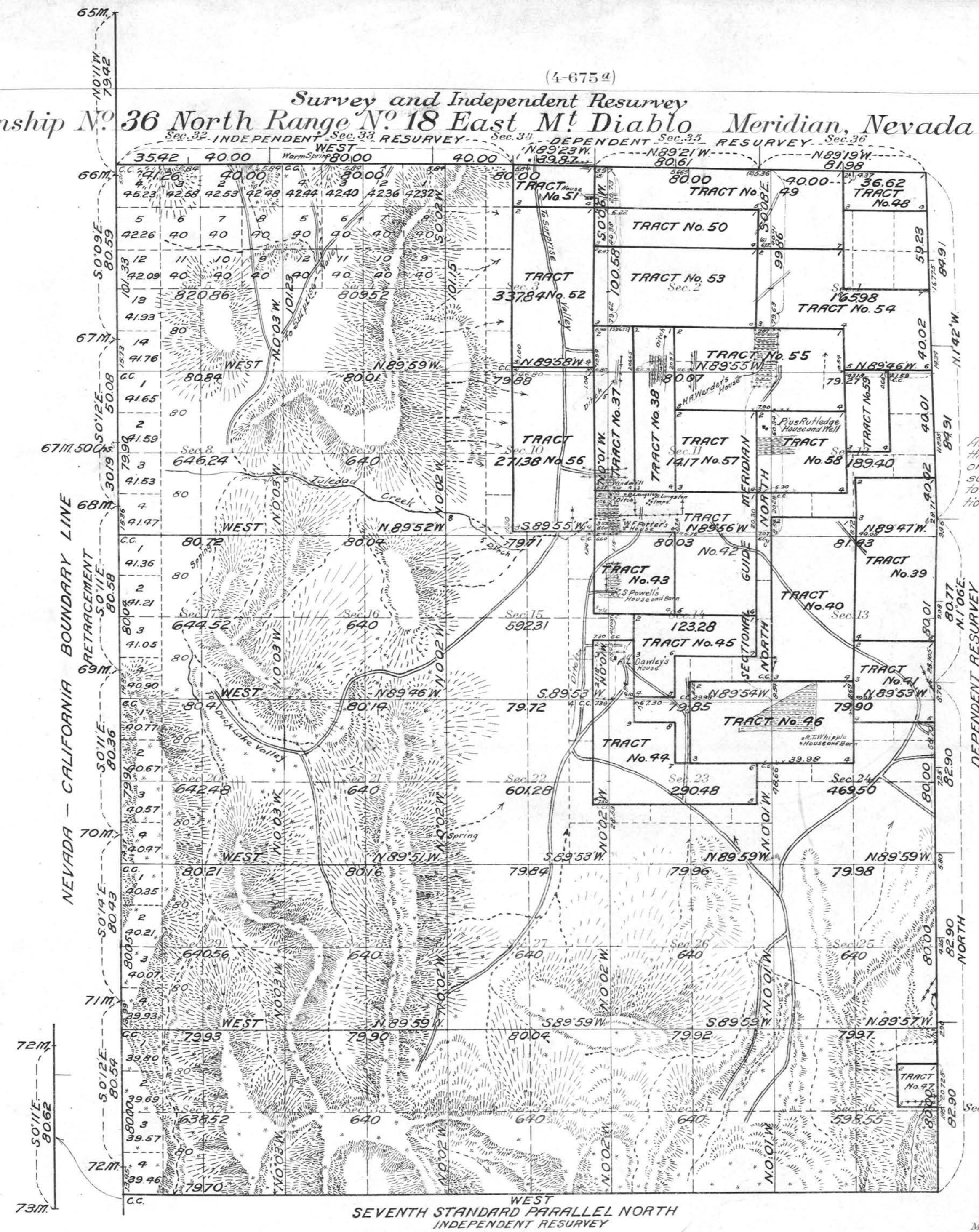


(4-675a)
Survey and Independent Resurvey
Township No. 36 North Range No. 18 East Mt. Diablo Meridian, Nevada



IN THREE SHEETS
SHEET No. 1.

Sec. 6
Resurveyed Sections and Fractional Sections.
Sections 1, 2, 11, 12, 13, 14, 23, 24, 25, 26, 35,
36, E 1/2 Sec. 3, E 1/2 Sec. 10, N.E. 1/4 Sec. 15, S.E.
1/4 Sec. 34. This plat will supercede all prior
plats relating to the above subdivisions
Sec. 7
All tract segregations shown hereon represents
the position and form of said tracts under the
original description as referred to the original
survey; located as such on the ground according
to the best available evidence of their true posi-
tion.

INDEX TO SEGREGATED TRACTS IN T. 36 N., R. 18 E.

Tract No.	Original Survey	Subdivisions	Status as to Land Office
37	H.E. 01948 David Langston	W 1/2 NW 1/4	Patented
38	H.E. 01947 Burrey Langston	E 1/2 NW 1/4	Patented
39	H.E. 01959 Evaline M. Miller	SW 1/4 NW 1/4	Patented
40	H.E. 07939 Joseph La Rosa	W 1/2	Patented
41	H.E. 05131 David Iverson	S 1/2	Patented
42	H.E. 07892 Wm. F. Porter	N 1/2 NW 1/4 and N 1/2 SE 1/4	Patented
43	H.E. 06208 Chas. S. Powell	SW 1/4 NW 1/4	Patented
44	H.L. 08276 Albert Z. Dowley	SW 1/4 NW 1/4	Patented
45	H.E. 09417 W.G. Mackie	S 1/2 SE 1/4 NW 1/4	Valid
46	H.E. 07371 Raymond T. Whipple	N 1/2 NW 1/4	Patented
47	D.E. 010497 Richard F. Cook	SE 1/4 NE 1/4	F.C.
48	H.E. 08895 D.M. Beam	Lots 1 and 2	Patented
49	H.E. 08339 Chas. R. Corran	Lots 3 and 4	Patented
50	H.E. 08218 Merlie A. Boettcher	S 1/2 NE 1/4	Valid
51	D.E. 08998 John N. Miano	Lots 1 and 2	Cancelled
52	H.E. 09317 Henry P. Ariess	N 1/2 NE 1/4	Valid
53	H.E. 08056 Jacob W. Ariess	SE 1/4 NW 1/4	Cancelled
54	H.E. 08057 H.P. Wender	SW 1/4 NW 1/4	Cancelled
55	H.E. 08055 H.P. Wender	N 1/2 NW 1/4	Patented
56	H.E. 09100 Robert S. Swift	N 1/2 NE 1/4	Valid
57	H.E. 07424 M.F. White	SE 1/4 NE 1/4	Patented
58	H.E. 08054 Plus Rutledge	SW 1/4	Patented
59	H.E. 08737 Plus Rutledge	SW 1/4 NE 1/4	Patented

Areas in Acres

Public Land	14896.87
Indian Reservation	
Indian Allotments	
Mineral Claims	
Water Surface	
Total Area	14896.87

Scale 40 Chains to an inch
Mean Magnetic Declination 1837 E.
Latitude 40° 58' N.
Longitude 119° 54' W

Surveys Designated	By Whom Surveyed	Group No.	Date	Amount of Surveys			When Surveyed		
				Mls.	chs.	fks.	Began	Completed	
North Bay Resur.	H.W. Reppert U.S.S.	45	July 10, 1916	4	77	88	Oct. 19, 1916	Sept. 24, 1919	
East Bay Resur.	and		and	6	19	29	Oct. 16, 1916	Sept. 18, 1919	
7th St. Par. N. Resur.	Emil Vorat U.S.S.		Feb. 26, 1919	4	79	70	Oct. 23, 1916	Oct. 24, 1916	
Nev.-Cal. Bay Retr.	G.L.O. Letters of		April 4, 1922	8	02	81	Oct. 19, 1916	Oct. 20, 1916	
Subdivisional Ind. Res.	Nov. 17, 1916 and			23	40	61.5	Oct. 25, 1916	Sept. 27, 1919	
Subdivision	Mar. 9, 1917			2	6	44	135	Oct. 27, 1916	Oct. 4, 1919
Metes and Bounds				37	33	03	Oct. 31, 1916	May 31, 1922	

survey and independent resurvey
The above map of Township No. 36 North Range No. 18 East of the Mt. Diablo Meridian Nevada is strictly conformable to the field notes of the survey thereof on file in this office, which have been examined and approved.
U.S. Surveyor General's Office.
Reno, Nevada, June 5, 1923

J. E. Golder
Surveyor General.