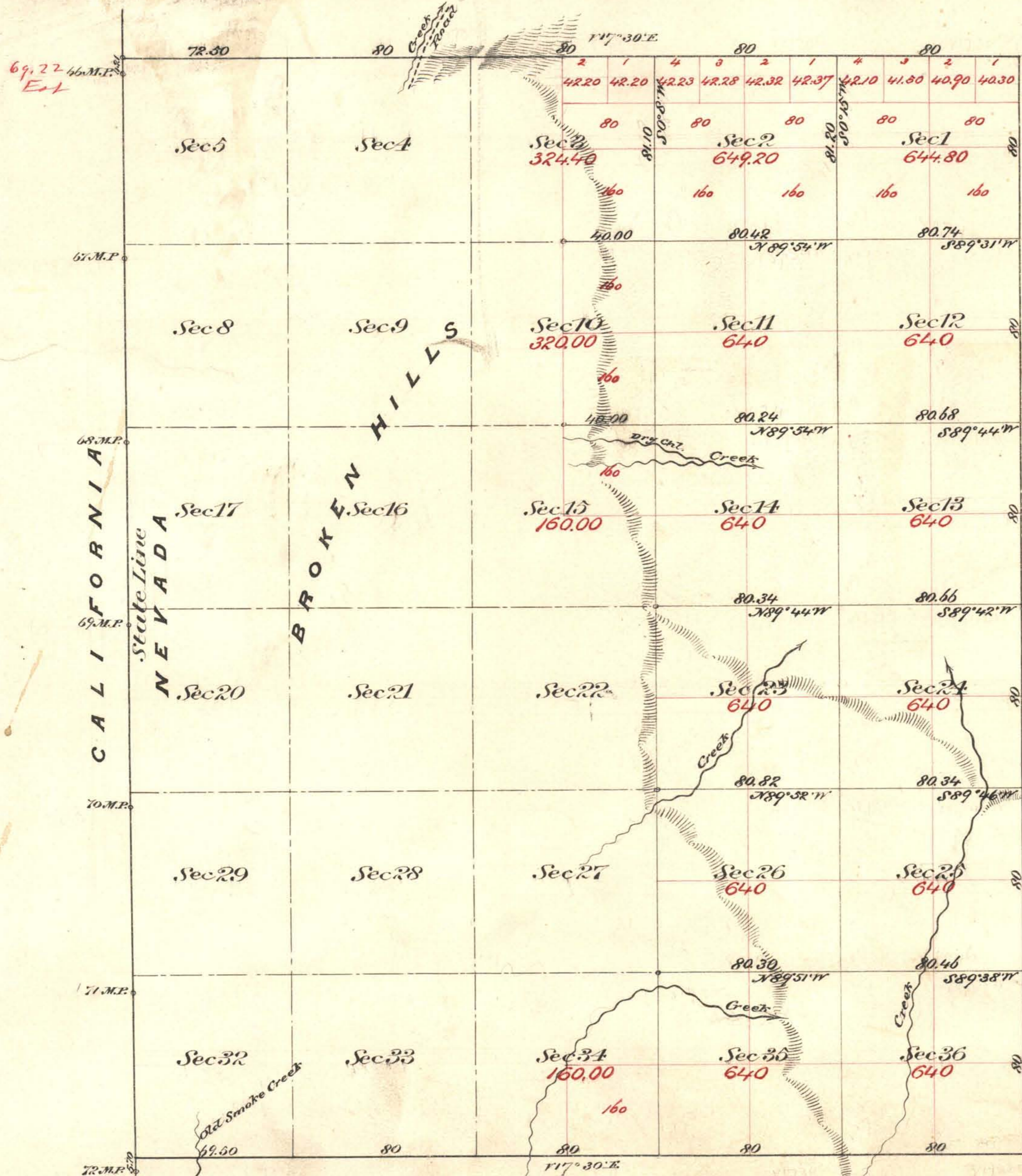


Township N° 36 North Range N° 18 East Mount Diablo Meridian



Aggregate Area of Public Land Surveyed
 Estimated " " Hoile's Unsurveyed
 Aggregate

8.658.40
<u>10.019.30</u>
18.677.70

Completed January 22nd 1850
 " " 23rd "

Subdivisions not otherwise noted run with Variation 17° 30' East
 The above plat of Township N° 36 North of Range N° 18 East Mount Diablo Meridian
 is strictly conformable to the field notes of the surveys thereof on file in this office
 which have been examined and approved
 M. S. Davis, State Office
 Virginia City Nev.
 March 6th 1850

Surveys designated	By whom surveyed	Date of Contract	Am't of Survey	When Surveyed
N. boundary State Line	A. W. von Schmidt	July 20 th 1872		1872
Township lines	H. W. Hauke	Dec. 16 th 1879	15-62-00	1880
Subdivisions	"	"	23-07-30	January "

0061

T36 N., R. 18 E.

C. S. Davis
 M. S. Davis, Genl. Sec.