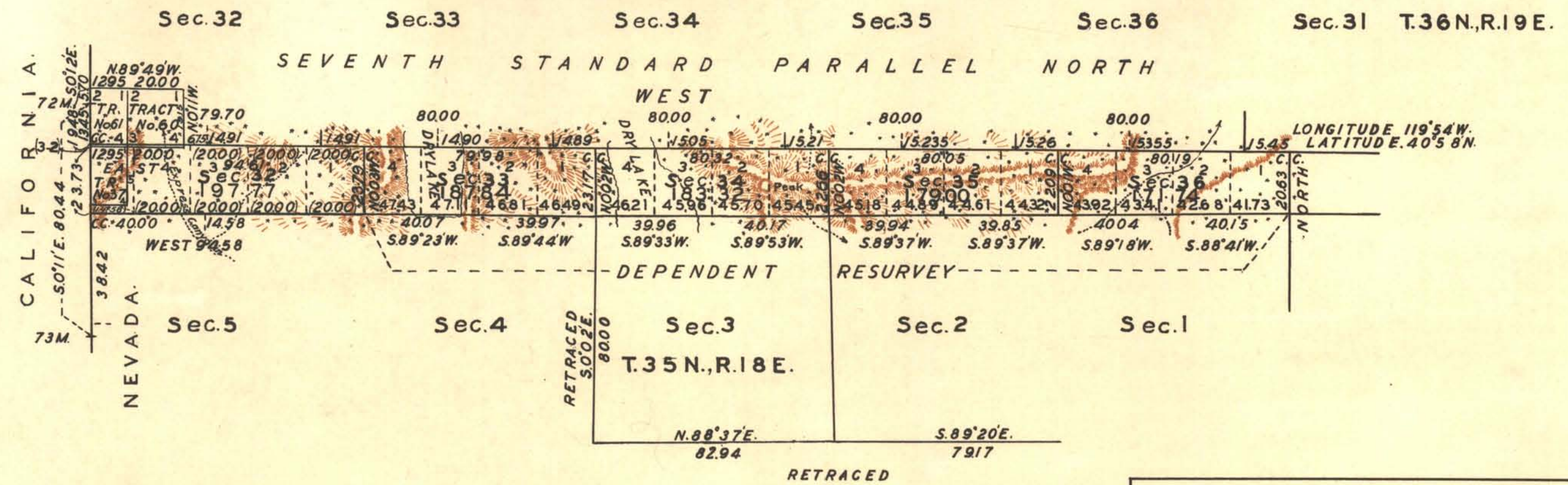
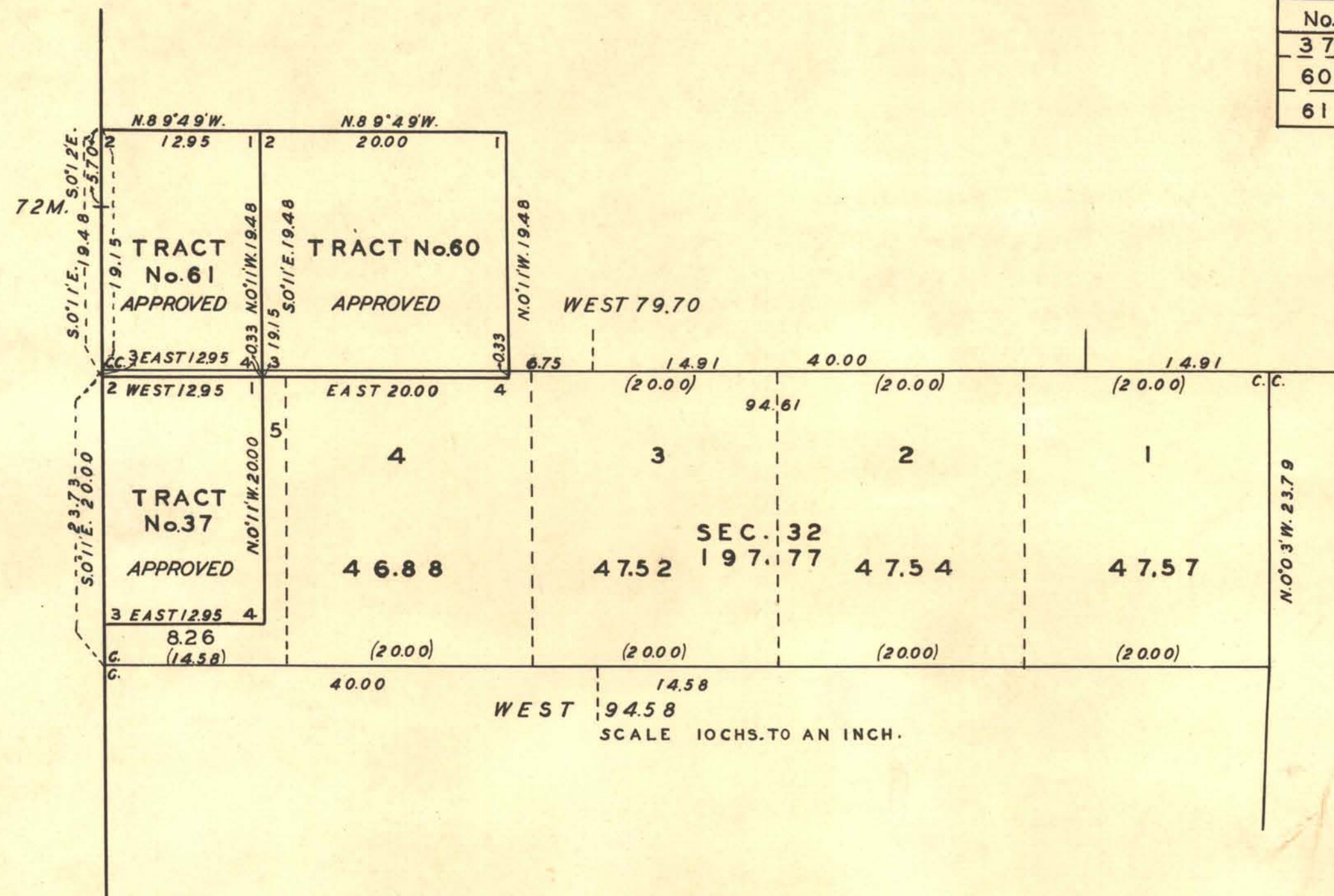


TOWNSHIP N°35½ NORTH RANGE N°18 EAST MOUNT DIABLO MERIDIAN NEVADA.



INDEX TO SEGREGATED TRACTS					
TRACT		ORIGINAL SURVEY			
No.	ENTRY & STATUS	Tp.	Rg.	Seg.	Subdvn
37	STATE, APPROVED	35N	18E	5	LOT 5
60	" "	"	"	"	LOT 3
61	" "	"	"	"	LOT 4



Mean Magnetic Declination,

Scale: 40 Chains to an Inch.

Area Surveyed, 919.67 Acres.

LINES DESIGNATED	BY WHOM SURVEYED	No	GROUP DATE	MILEAGE		WHEN SURVEYED	
				MLS.	CHS.	BEGUN	COMPLETED
Exterior	H.W. REPERT	45	JULY 10, 1916.			OCT. 23, 1916.	OCT. 24, 1916.
Subdivisional	WALTER H. GOOD	117	MARCH 19, 1928.	1	11.71	JUNE 28, 1928.	JULY 1, 1928.
EXTERIOR	WALTER H. GOOD	117	OCT. 10, 1925 & MAR. 19, 1928.	5	59.09	OCT. 5, 1927	JULY 6, 1928.
Miscellaneous	WALTER H. GOOD	117	MARCH 19, 1928.	5	0241	JUNE 28, 1928.	JULY 9, 1928.

Office of U.S. Supervisor of Surveys
 Denver, Colorado, Sept. 14, 1929.
 The above plat of Township No. 35½ N., Range No. 18 East of the Mount Diablo Meridian, Nevada, is strictly conformable to the field notes of the survey thereof which have been examined and approved.

Walter H. Good
 U.S. Supervisor of Surveys.

DEPARTMENT OF THE INTERIOR
 GENERAL LAND OFFICE

Washington, D.C., January 13, 1930.
 The survey represented by this plat having been correctly executed in accordance with the requirements of law and the regulations of this office, is hereby accepted.

Shoostavell
 Assistant Commissioner.

A.R.S. Plat.