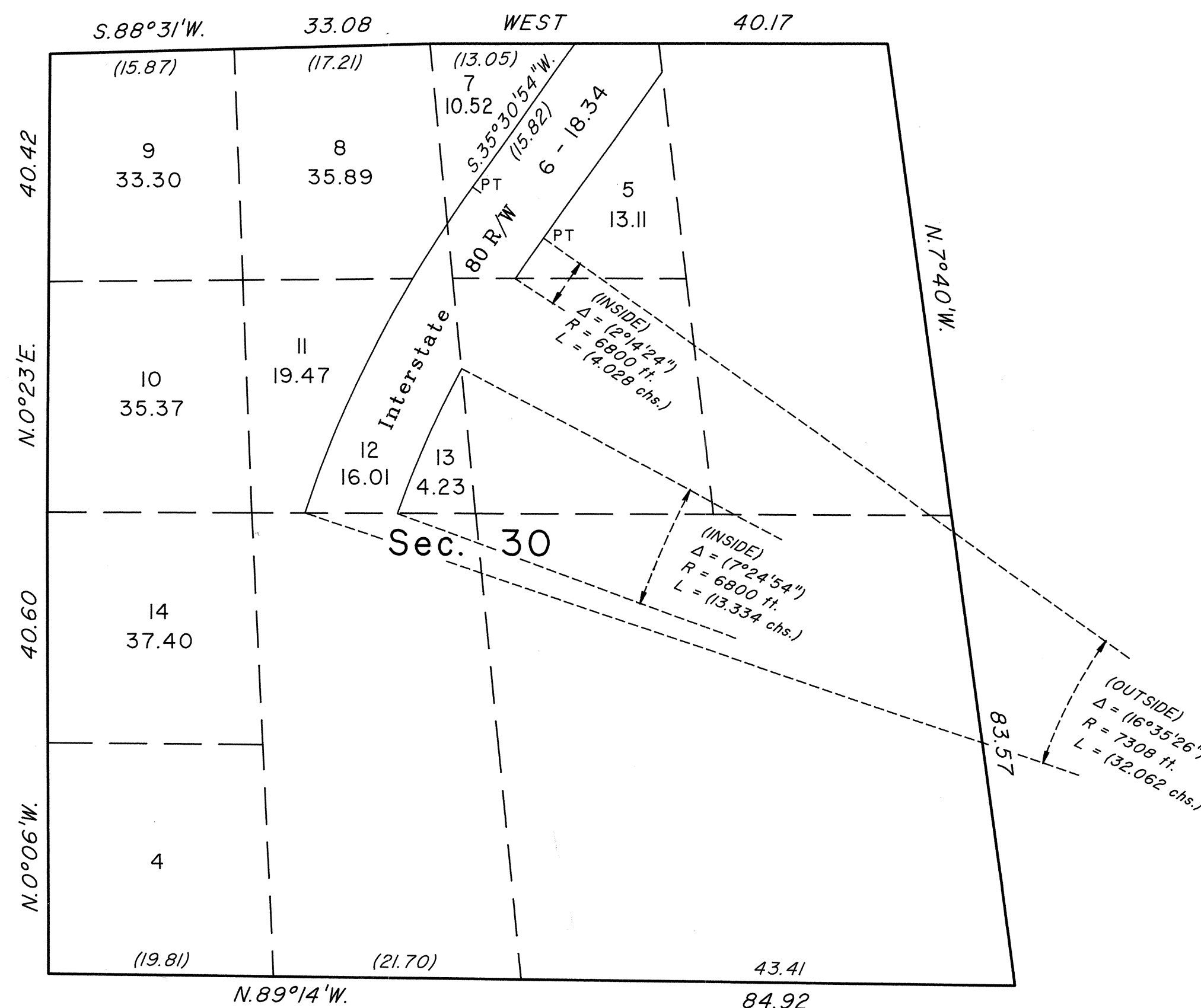
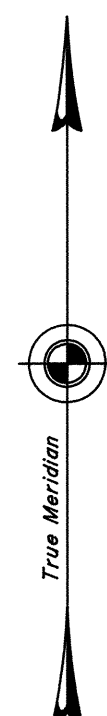


TOWNSHIP 35 NORTH, RANGE 56 EAST, OF THE MOUNT DIABLO MERIDIAN, NEVADA
SUPPLEMENTAL PLAT OF SECTION 30



This plat, showing amended and additional lotting of sec. 30, T. 35 N., R. 56 E., Mount Diablo Meridian, Nevada, is based upon the plats approved December 7, 1868, and April 13, 1917, and State of Nevada R/W application file Nev-064983.

The data shown in parentheses along section lines and depicting highway information are derived by calculation.

UNITED STATES DEPARTMENT OF THE INTERIOR
BUREAU OF LAND MANAGEMENT

Reno, Nevada

May 9, 1994

This plat, showing amended and additional lottings, is based upon the official records, and having been correctly prepared in accordance with the regulations of this Bureau, is hereby accepted.

For the Director

John L. Parrish

Chief Cadastral Surveyor, Nevada

