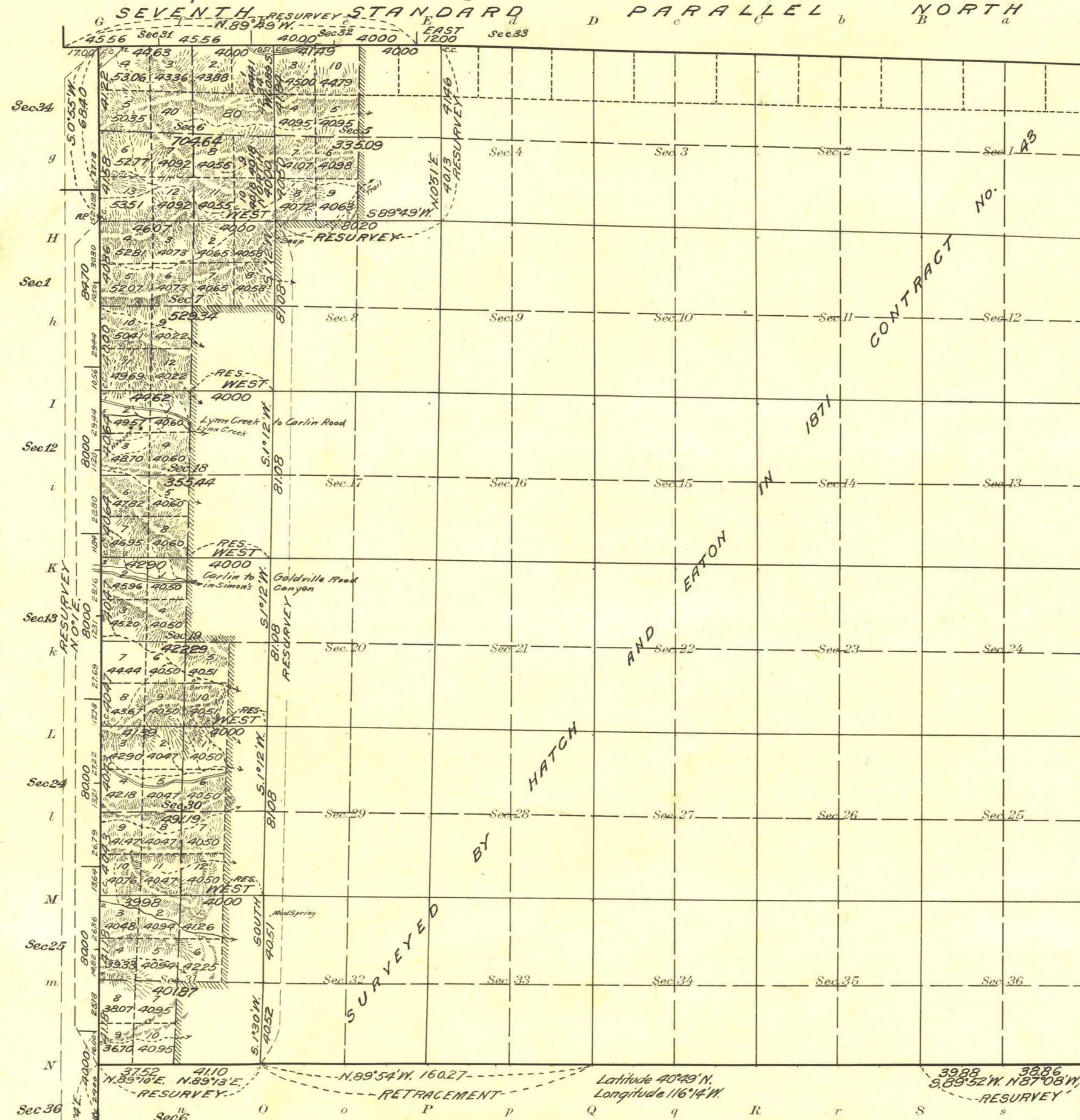


Accepted May 2, 1922.

# Township No. 35 North Range No. 51 East Mt. Diablo Meridian, Nevada



y  
Y  
X  
w  
W  
v  
V  
u  
U  
t

NOTE  
Surveyor reports mineral indications  
in the fractional township

Areas in Acres	
Public Land	3239.86
Indian Reservation	
Indian Allotments	
Mineral Claims	
Water Surface	
<b>Total Area</b>	<b>3239.86</b>

Scale 40 Chains to an inch  
Mean Magnetic Declination 17°45' E.

Surveys Designated	By Whom Surveyed	Group No.	Date of Instructions	Amount of Surveys			When Surveyed	
				Mts.	chs.	fts.	Begun	Completed
Seventh St. Par. N. Res.	Scott P. Stewart	27	Mar. 23, 1912	2	23	12	Sept. 7, 1914	Sept. 14, 1914
South Bdy. Res.	and Puban W. Riley	"	and Feb. 14, 1914	1	77	36	Aug. 26, 1914	June 2, 1916
West Bdy. Res.	"	"	"	6	9	10	May 30, 1916	June 2, 1916
Subdivision Res.	"	"	"	8	47	13	Aug. 31, 1914	June 7, 1916
Subdivision	"	"	"	4	57	30	Aug. 31, 1914	June 7, 1916
Corrections	Scott P. Stewart	"	Apr. 6, 1916				May 31, 1916	June 2, 1916
Corrections	J.G. Clark	"	Feb. 11, 1918					June 5, 1918
South Bdy Retr.	"	"	"	2	00	27		

The above map of Township No. 35 North Range No. 51 East of the Mt. Diablo Meridian Nevada is strictly conformable to the field notes of the survey thereof on file in this office, which have been examined and approved  
U. S. Surveyor General's Office.  
Reno, Nevada, October 18, 1921

*J. E. Kelder*  
Surveyor General.