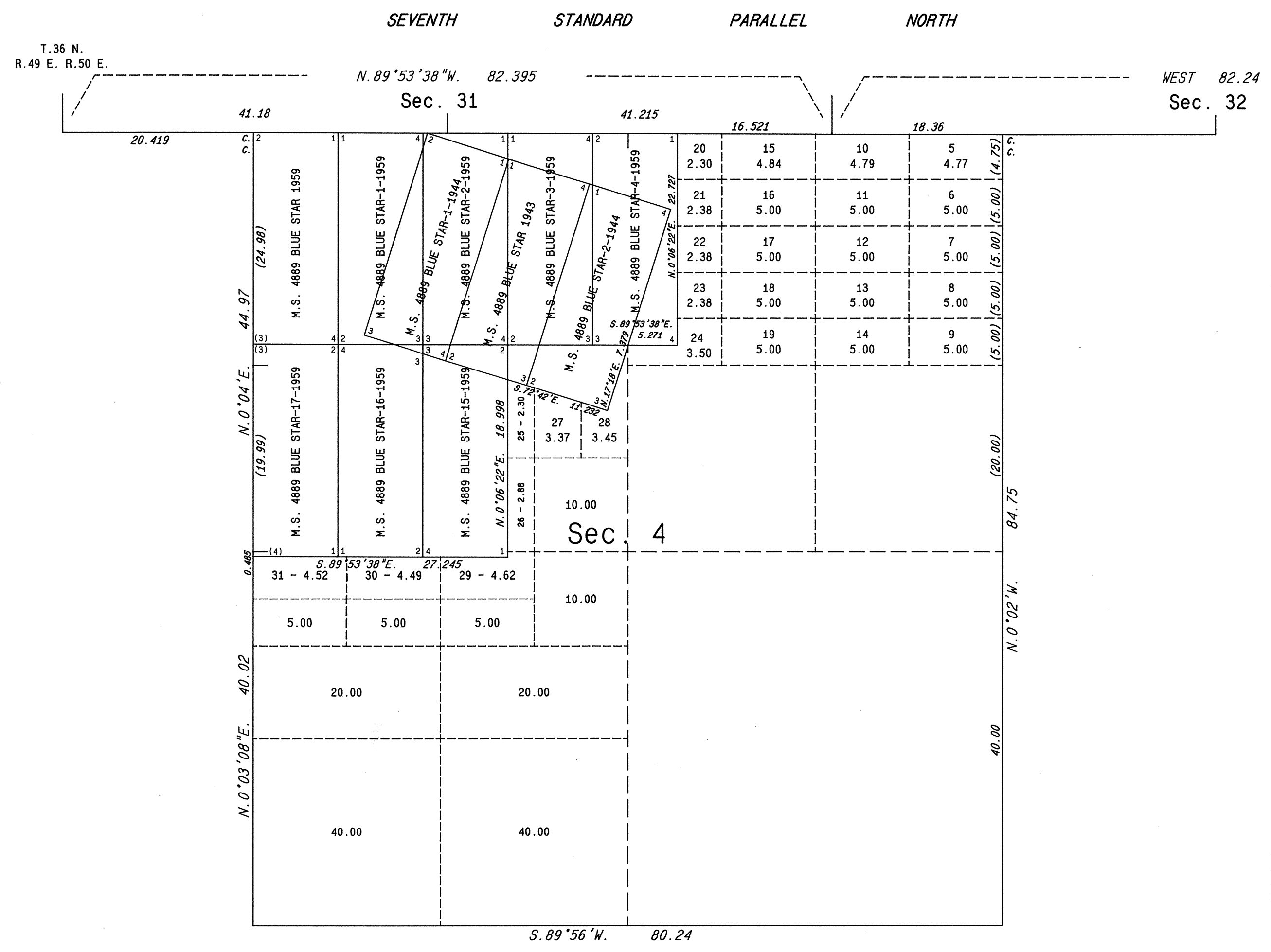


TOWNSHIP 35 NORTH, RANGE 50 EAST, OF THE MOUNT DIABLO MERIDIAN, NEVADA
 SUPPLEMENTAL PLAT OF SECTION 4



This plat, showing amended lottings in sec. 4, T. 35 N., R. 50 E., Mount Diablo Meridian, Nevada, is based upon the plat approved October 18, 1921 and the mineral survey records.

UNITED STATES DEPARTMENT OF THE INTERIOR
 BUREAU OF LAND MANAGEMENT
 Reno, Nevada September 26, 1988

This plat, showing amended lottings, is based upon the official records and, having been correctly prepared in accordance with the regulations of this Bureau, is hereby accepted.

For the Director
Lacel E. Bland
 Chief Cadastral Surveyor

