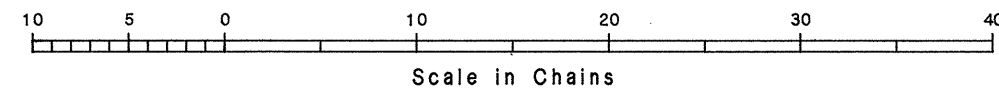
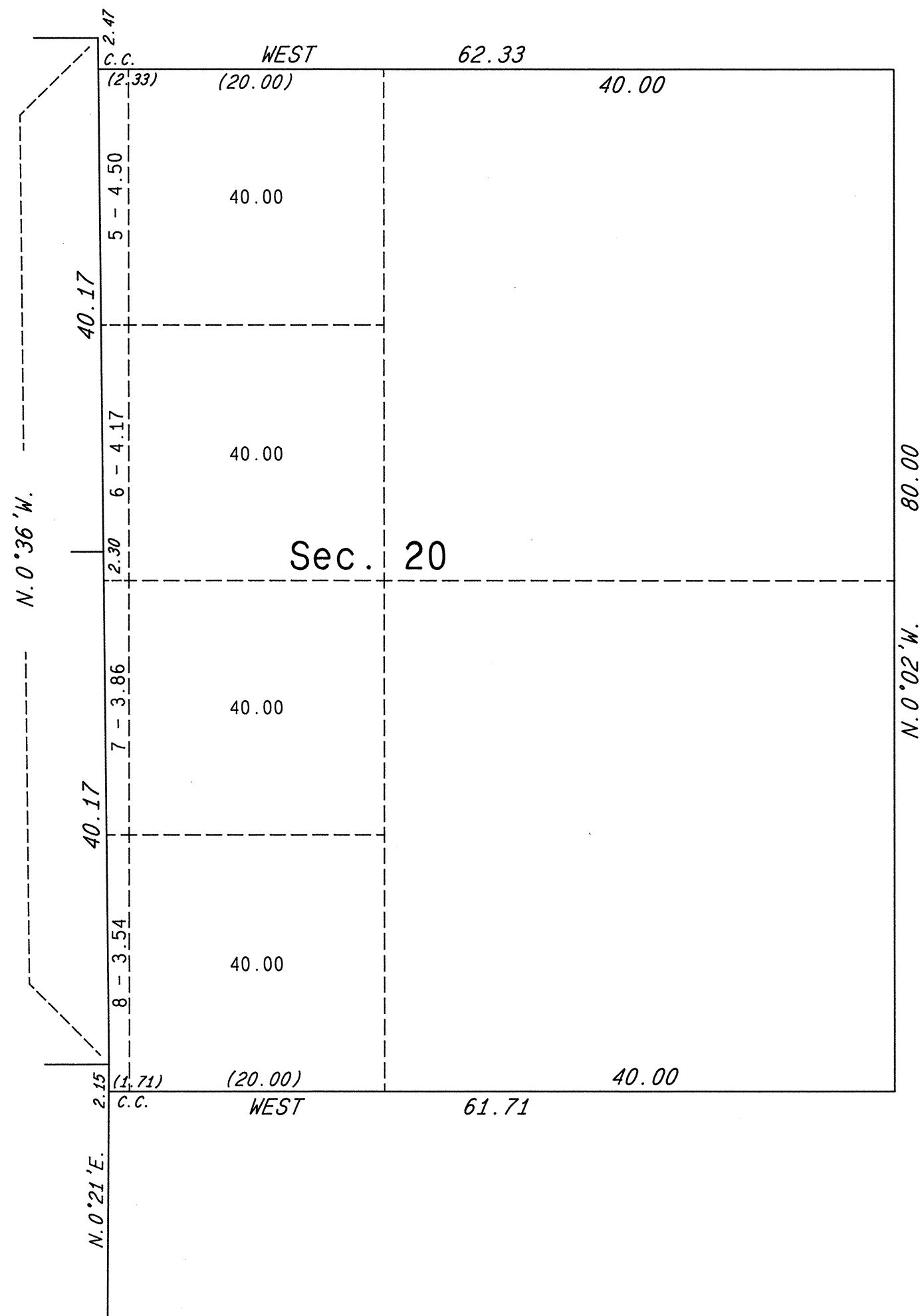
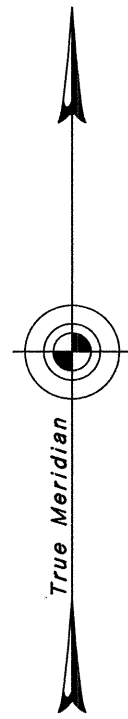


TOWNSHIP 35 NORTH, RANGE 50 EAST, OF THE MOUNT DIABLO MERIDIAN, NEVADA  
 SUPPLEMENTAL PLAT OF SECTION 20



This plat, showing amended lottings in sec. 20, T. 35 N., R. 50 E., Mount Diablo Meridian, Nevada, is based upon the plat approved October 18, 1921.

UNITED STATES DEPARTMENT OF THE INTERIOR  
 BUREAU OF LAND MANAGEMENT

Reno, Nevada September 23, 1986

This plat, showing amended lottings, is based upon the official records and, having been correctly prepared in accordance with the regulations of this Bureau, is hereby accepted.

For the Director

*Lacel E. Bland*

Chief Cadastral Surveyor