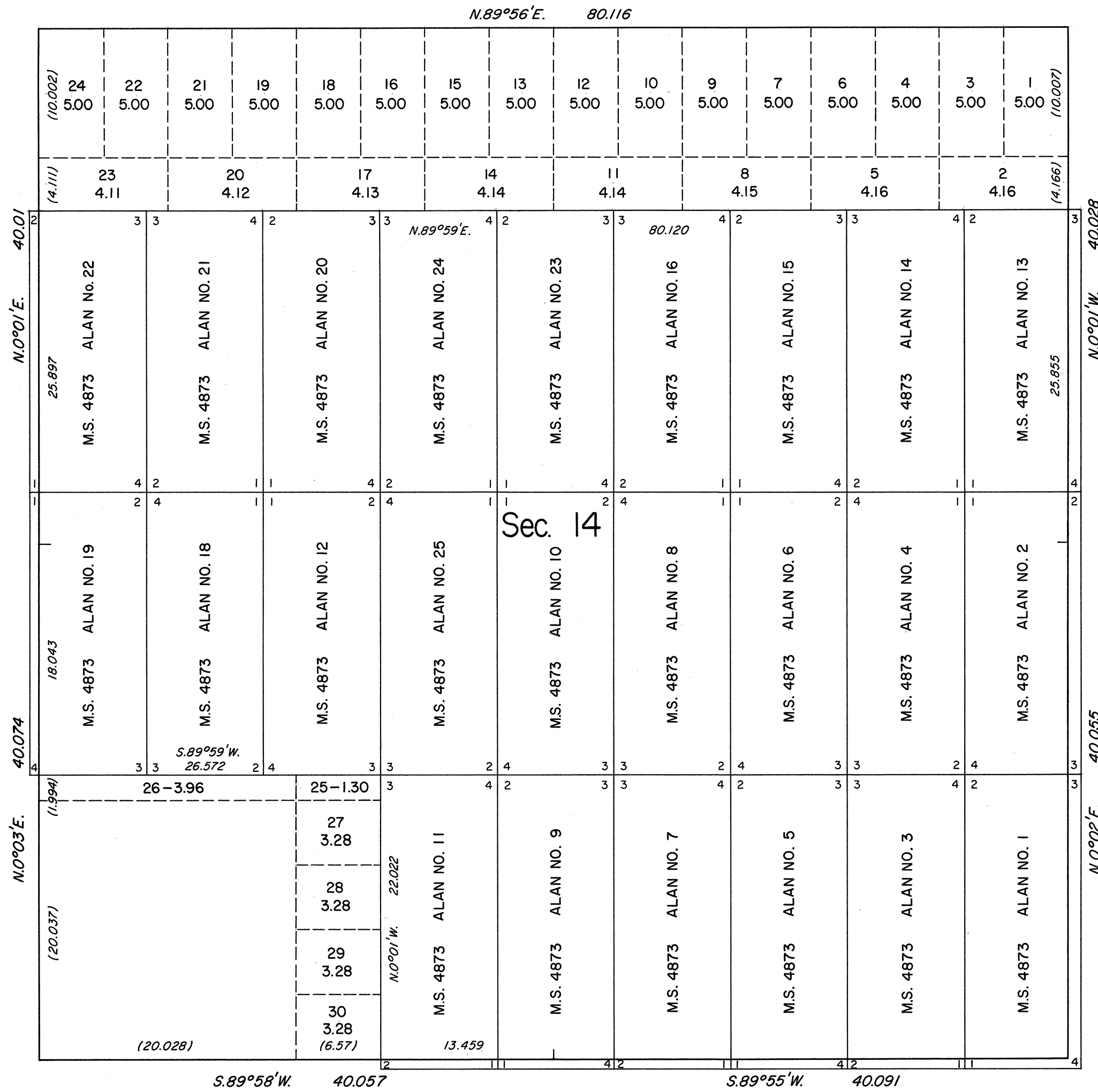
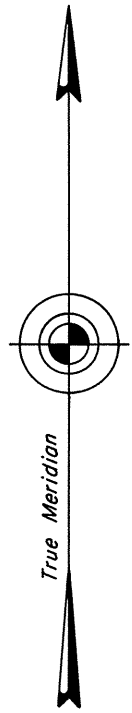


TOWNSHIP 35 NORTH, RANGE 50 EAST, OF THE MOUNT DIABLO MERIDIAN, NEVADA
SUPPLEMENTAL PLAT OF SECTION 14



This plat, showing a subdivision of sec. 14, T. 35 N., R. 50 E., Mount Diablo Meridian, Nevada, is based upon the plat approved October 18, 1921, and the Mineral Survey records.

UNITED STATES DEPARTMENT OF THE INTERIOR
BUREAU OF LAND MANAGEMENT
Reno, Nevada November 15, 1985

This plat, showing amended lottings, is based upon the official records and, having been correctly prepared in accordance with the regulations of this Bureau, is hereby accepted.

For the Director

Lacel E. Bland

Chief Cadastral Surveyor

