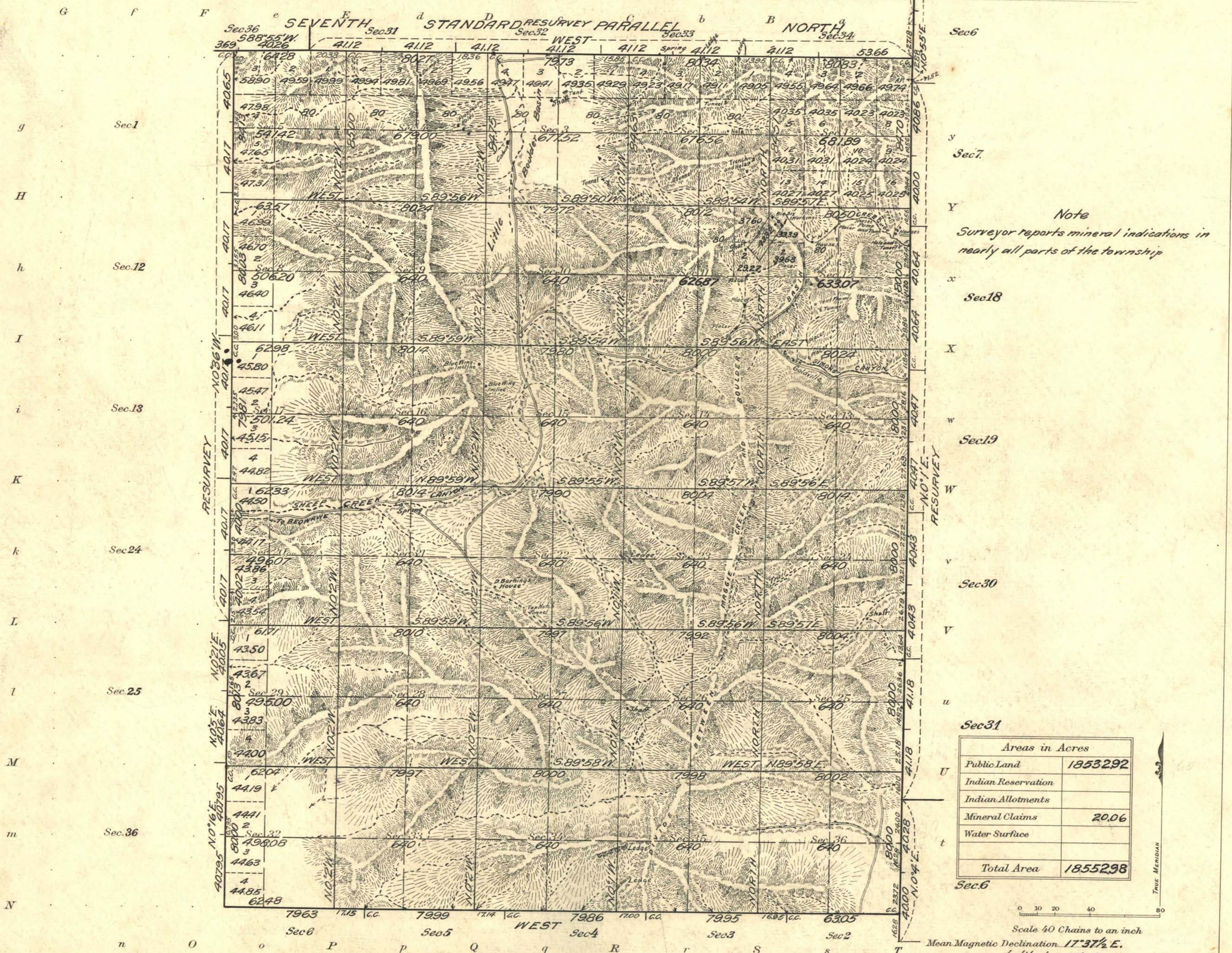


Township No 35 North Range No 50 East Mt Diablo Meridian, Nevada



Note
 Surveyor reports mineral indications in nearly all parts of the township

Sec 31

Areas in Acres	
Public Land	18532.92
Indian Reservation	
Indian Allotments	
Mineral Claims	20.06
Water Surface	
Total Area	18552.98

Scale 40 Chains to an inch
 Mean Magnetic Declination 17° 37' 1/2" E.
 Latitude 40° 45' N.
 Longitude 116° 18' W.

Surveys Designated	By Whom Surveyed	Group			When Surveyed			
		No.	Date of Instructions	Mls.	chs.	lks.	Begun	Completed
7th St. Par. North Res.	Scott P. Stewart and Ruben W. Riley	27	Mar. 23, 1914	4	65	45	Sept 4, 1914	Sept 14, 1914
East Bdy. Res.	"	6	Feb. 14, 1917	6	20	9.8	May 3, 1916	June 2, 1916
West Bdy. Res.	"	6	"	6	04	12	Sept 11, 1914	June 3, 1916
South Bdy. Subdivision	"	4	"	4	62	43	Sept 14, 1914	Sept 16, 1914
Corrections	Scott P. Stewart	48	Arr 6, 1916	12		50	Sept 16, 1914	June 2, 1916
Corrections	J.C. Clark		Feb 11, 1918				June 1, 1916	June 3, 1916
							June 3, 1918	June 5, 1918

The above map of Township No. 35 North Range No. 50 East of the Mt Diablo Meridian Nevada is strictly conformable to the field notes of the survey thereof on file in this office, which have been examined and approved

U. S. Surveyor General's Office.
 Reno, Nevada, October 18, 1921

J. C. Calder
 Surveyor General.