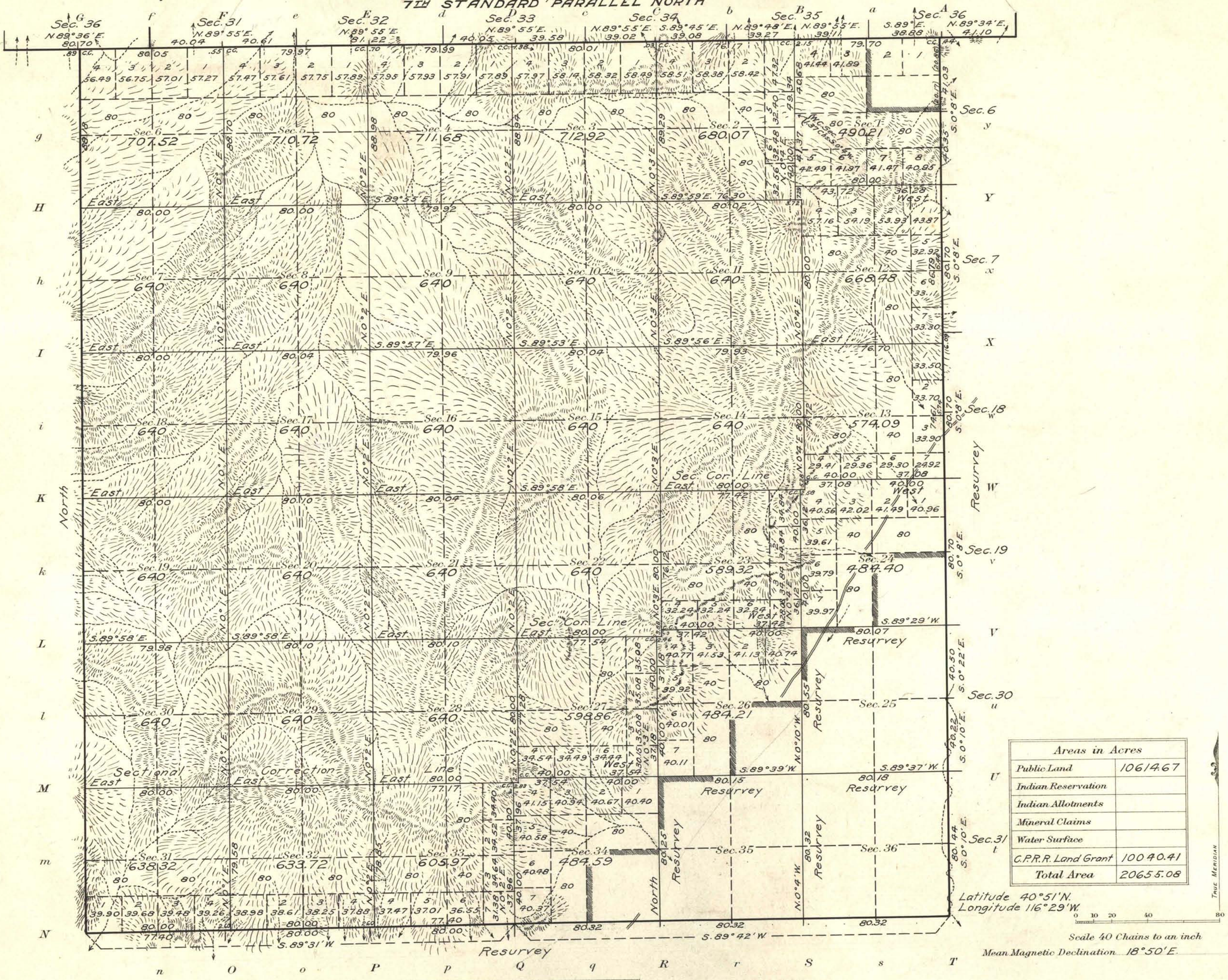


Township N^o 35 North Range N^o 48 East Mt Diablo Meridian, Nevada



Surveys Designated	By Whom Surveyed	Group		Amount of Surveys			When Surveyed	
		No.	Date	Mts.	chs.	lks.	Begun	Completed
7th St Par. North (res)	Winfred A. Pray	24	Feb. 25, 1913	6	78	66	July 20, 1914	July 20, 1914
E. Boundary (res)	"	"	"	6	4	64	" 21, "	" 21, "
S. " (res)	"	"	"	5	78	36	" 22, "	" 22, "
W. " (res)	"	"	"	6	8	18	" 1, "	" 1, "
Subdivisions	"	"	"	54	23	97	" 23, "	Aug. 1, "
" (res)	"	"	"	6	1	52	" 31, "	July 31, "

The above map of Township No. 35 North Range No. 48 East of the Mt. Diablo Meridian Nevada is strictly conformable to the field notes of the survey thereof on file in this office, which have been examined and approved

U. S. Surveyor General's Office.
Reno, Nevada January 29, 1916

John B. Sullivan
Surveyor General.