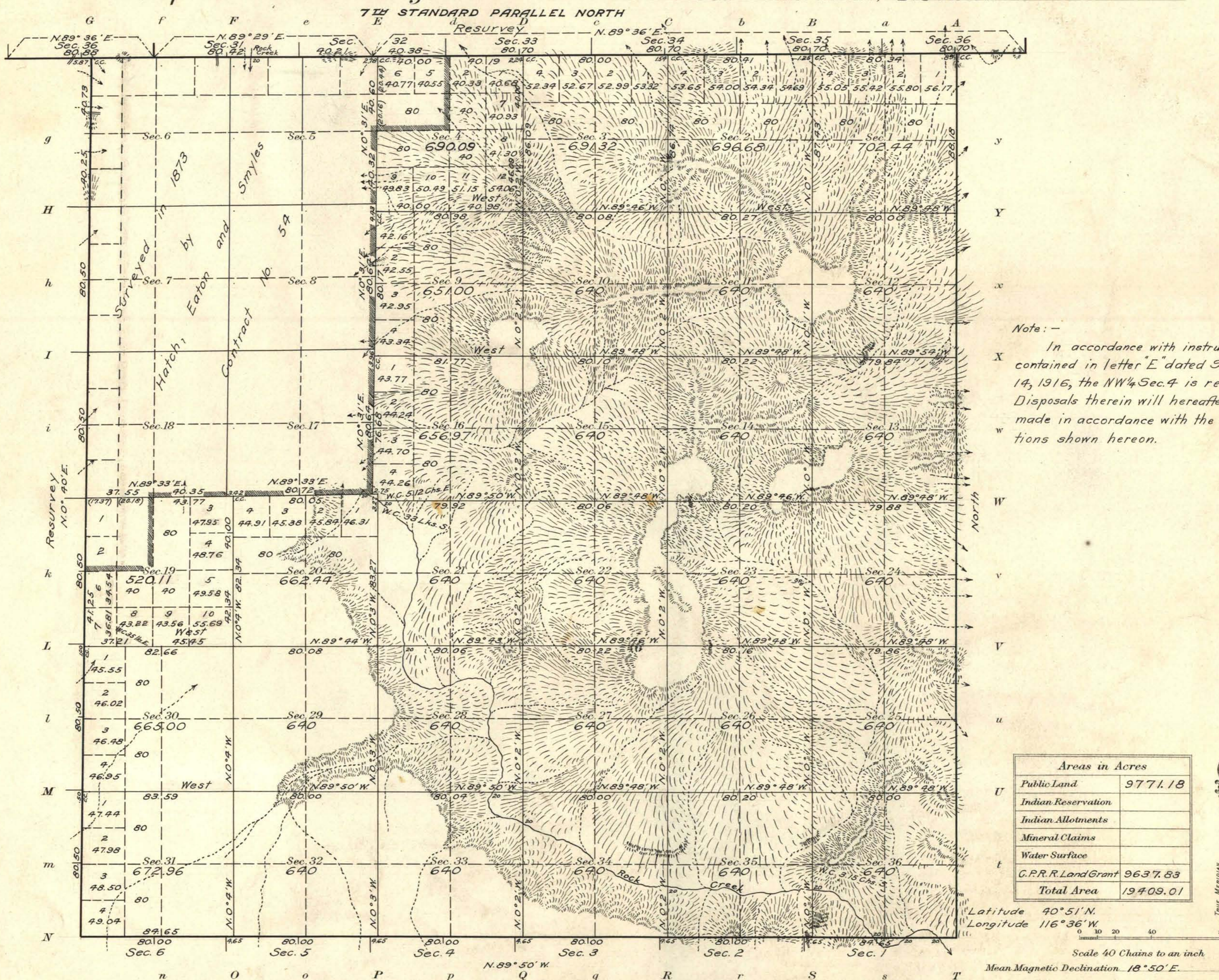


Township N° 35 North Range N° 47 East Mt Diablo Meridian, Nevada



Note: -
In accordance with instructions contained in letter "E" dated September 14, 1916, the NW 1/4 Sec. 4 is resurveyed. Disposals therein will hereafter be made in accordance with the descriptions shown hereon.

Areas in Acres	
Public Land	9771.18
Indian Reservation	
Indian Allotments	
Mineral Claims	
Water Surface	
G.P.R.R. Land Grant	9637.83
Total Area	19409.01

Latitude 40° 51' N.
Longitude 116° 36' W.
Scale 40 Chains to an inch.
Mean Magnetic Declination 18° 50' E.

Surveys Designated	By Whom Surveyed	Group		Amount of Surveys			When Surveyed	
		No.	Date of instructions	Mls.	chs.	fcs.	Begun	Completed
7th St. Par. North (res.)	Winfred A. Pray	24	Feb. 25, 1913	5	78	92	June 30, 1914	June 30, 1914
W. Boundary (res.)	"	"	"	6	3	48	" 27, "	" 27, "
S. "	"	"	"	6	4	65	" 15, "	" 15, "
E. "	"	"	"	6	8	18	July 1, "	July 1, "
Subdivisions (res.)	"	"	"	5	00	82	" 15, "	" 15, "
"	"	"	"	48	38	81	" 2, "	" 18, "

The above map of Township No. 35 North Range No. 47 East of the Mt. Diablo Meridian Nevada is strictly conformable to the field notes of the survey thereof on file in this office, which have been examined and approved

U. S. Surveyor General's Office.
Reno, Nevada January 29, 1916

John B. Sullivan
Surveyor General.