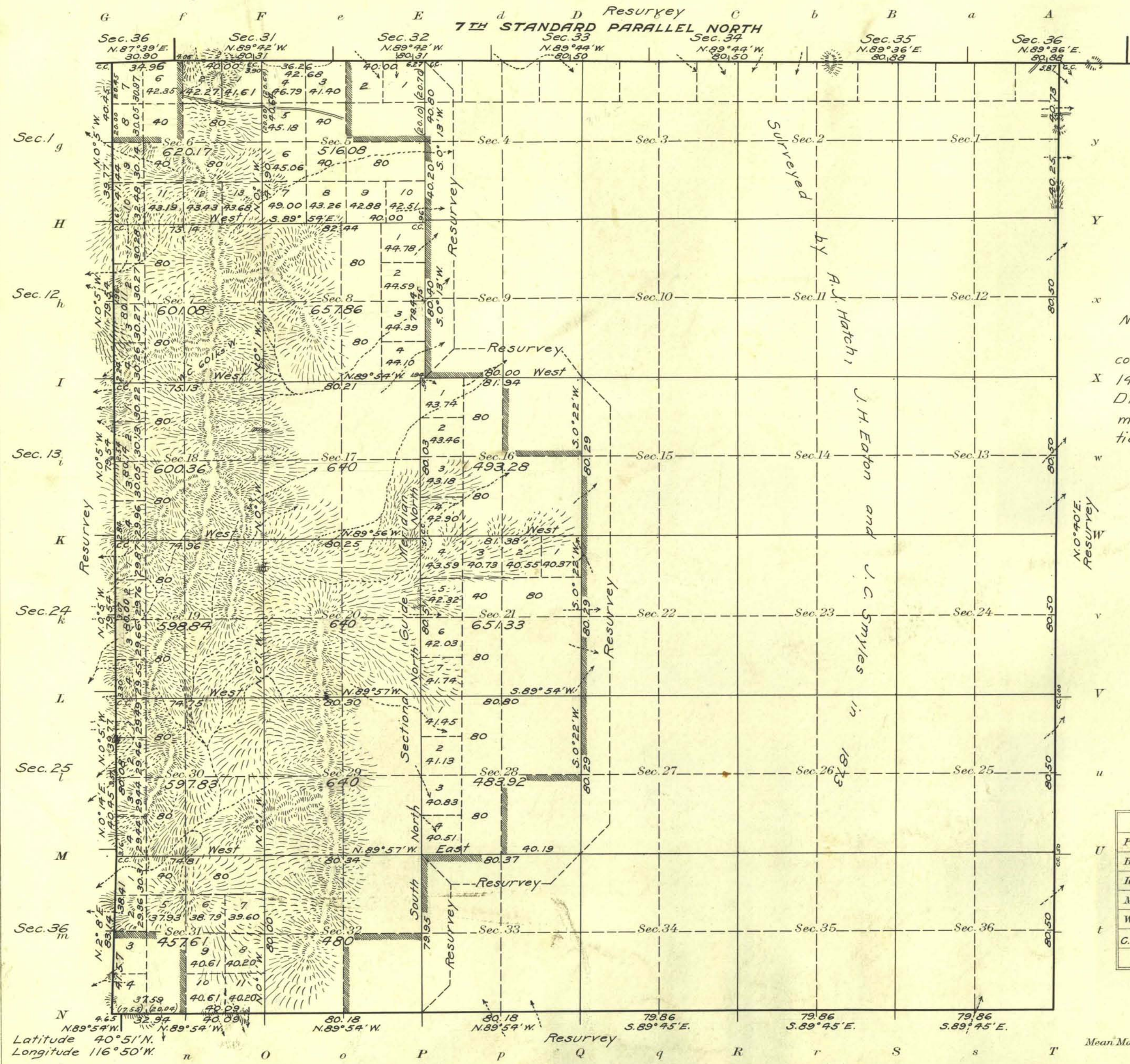


Township N^o 35 North Range N^o 46 East Mt Diablo Meridian, Nevada



Note:-
In accordance with instructions contained in letter "E" dated September 14, 1916, the NW¹/₄ Sec. 6 is resurveyed. Disposals therein will hereafter be made in accordance with the descriptions shown hereon.

Areas in Acres	
Public Land	4573.42
Indian Reservation	
Indian Allotments	
Mineral Claims	
Water Surface	
C.P.R.R. Land Grant	4107.94
Total Area	8678.36

Surveys Designated	By Whom Surveyed	Group		Amount of Surveys			When Surveyed	
		No.	Date of instructions	Mls.	chs.	fts.	Began	Completed
7th St. Br. N. (res)	W. A. Pray and John C. Collins	24	Feb. 25, 1913	5	79	71	Oct. 25, 1913	Aug. 21, 1914
Subdivisions (res)	Pray, Reagin and Collins	"	"	8	2	59	Oct. 27, 1913	Aug. 21, 1914
"	"	"	"	20	65	53	" 29, "	" 27, "
W. Boundary (res)	"	"	"	6	2	14	Aug. 17, 1914	" 18, "
S. "	"	"	"	5	77	62	Oct. 22, 1913	" 19, "
E. "	W. A. Pray	"	"	6	3	48	June 27, 1914	

The above map of Township No. 35 North Range No. 46 East of the Mt. Diablo Meridian Nevada is strictly conformable to the field notes of the survey thereof on file in this office, which have been examined and approved

U. S. Surveyor General's Office.
Reno, Nevada January 29, 1916

John B. Sullivan
Surveyor General.