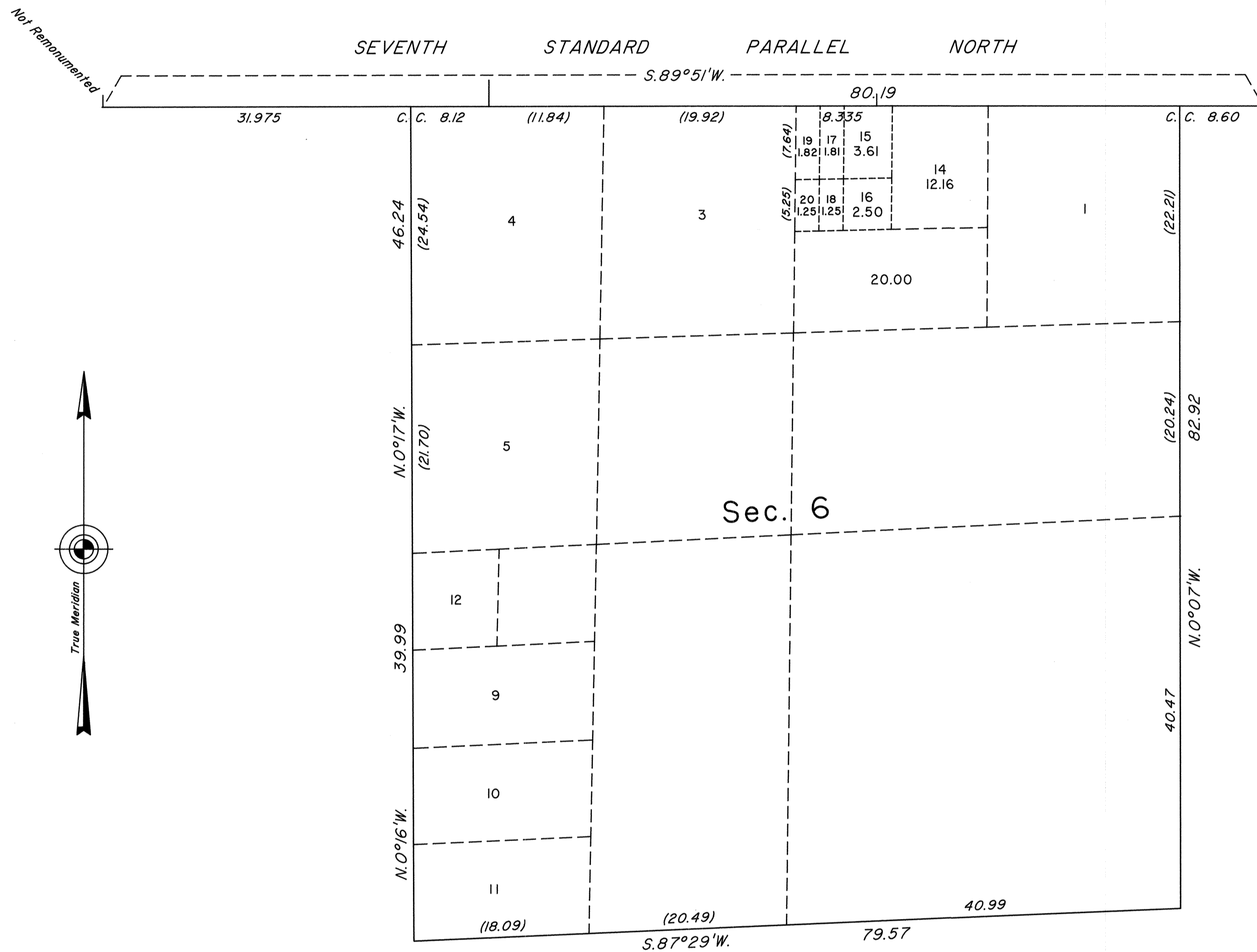


TOWNSHIP 35 NORTH, RANGE 38 EAST, OF THE MOUNT DIABLO MERIDIAN, NEVADA  
SUPPLEMENTAL PLAT OF SECTION 6

Sec. 36

Sec. 31



This plat, showing a subdivision of lot 13, sec. 6, T.35N., R.38E., Mount Diablo Meridian, Nevada, is based upon the plat approved August 21, 1868, the plat accepted May 3, 1968, and the supplemental plats accepted March 17, 1982, October 21, 1983 and August 21, 1985.

UNITED STATES DEPARTMENT OF THE INTERIOR  
BUREAU OF LAND MANAGEMENT

Reno, Nevada March 23, 1999

This plat, showing amended lottings, is based upon the official records, and having been correctly prepared in accordance with the regulations of this Bureau, is hereby accepted.

For the Director

*David J. Clark*

Chief Cadastral Surveyor, Nevada

