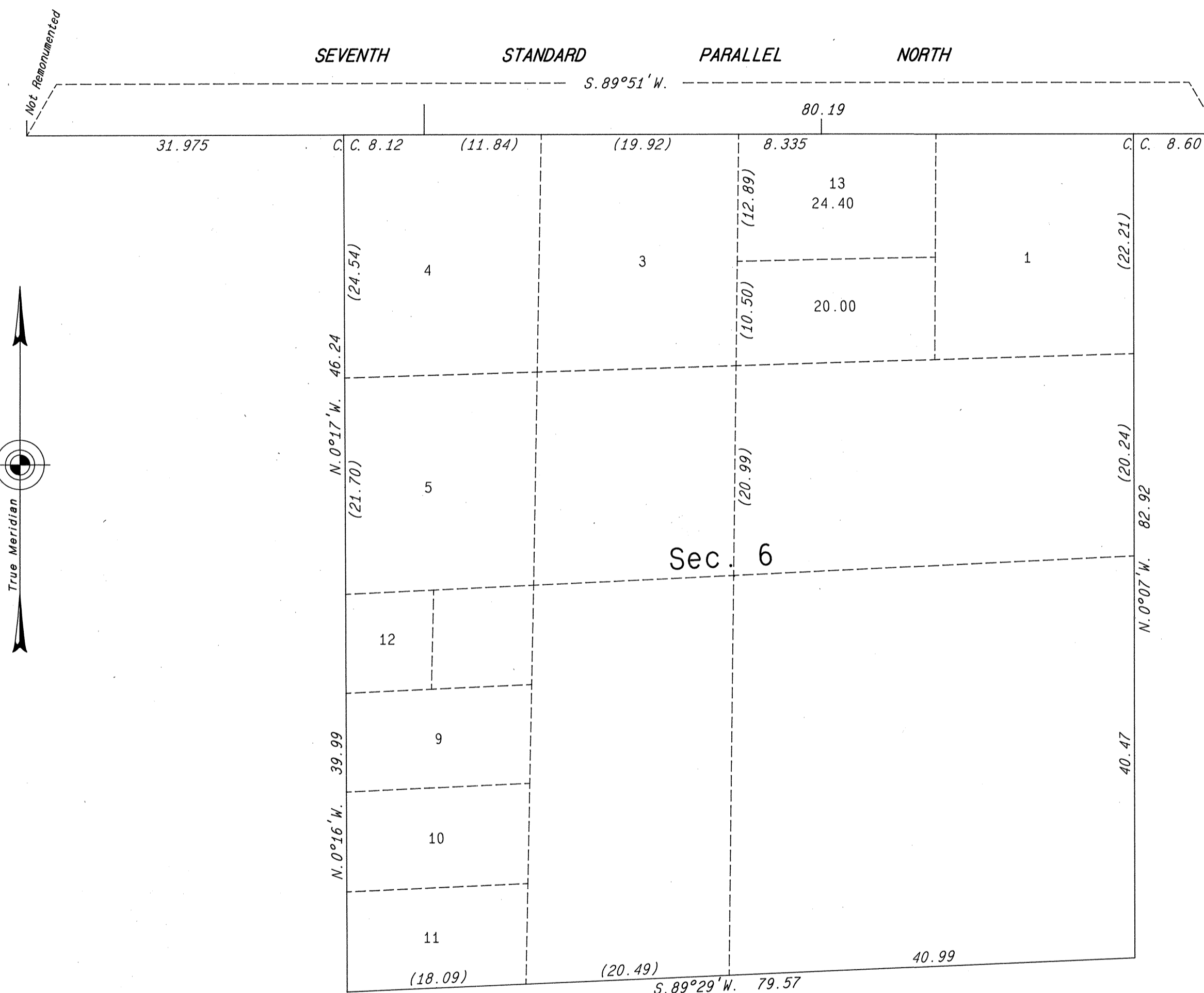
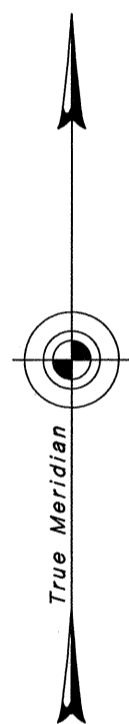


TOWNSHIP 35 NORTH, RANGE 38 EAST, OF THE MOUNT DIABLO MERIDIAN, NEVADA
SUPPLEMENTAL PLAT OF SECTION 6

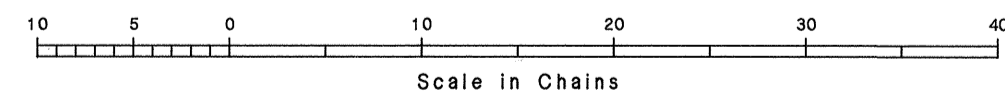
OFFICIALLY FILED
NEVADA STATE OFFICE
10:00 A.M. September 9, 1985



This plat showing a subdivision of original lot 2, sec. 6, T. 35 N., R. 38 E., Mount Diablo Meridian, Nevada, is based upon the plat approved August 21, 1868, the plat accepted May 3, 1968, and the supplemental plats accepted March 17, 1982, and October 21, 1983.



NOTE:
"S. 89° 29' W." should be S. 87° 29' W."
per memorandum dated September 26, 1985,
File 9622.1 (NV-942), Nevada.



UNITED STATES DEPARTMENT OF THE INTERIOR
BUREAU OF LAND MANAGEMENT
Reno, Nevada August 21, 1985

This plat, showing amended lottings, is based upon the official records and, having been correctly prepared in accordance with the regulations of this Bureau, is hereby accepted.

For the Director
Lacel E. Bland
Chief Cadastral Surveyor